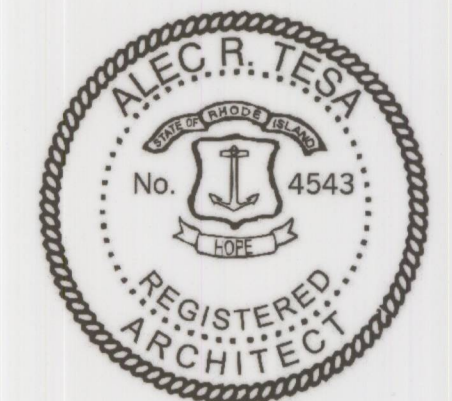


DIMENSIONAL  
 AS-BUILT SET  
 12/20/22



Condominium Plans  
**SEAVIEW TOWNHOMES CONDOMINIUM**  
 63 Conanicus Avenue  
 Jamestown, Rhode Island  
 Assessor's Plat 8, Lot 181  
 Declarant: SEATH, L.L.C., a Rhode Island limited liability  
 company Survey must be certified as follows:

The Undersigned hereby certifies that this Plat Survey  
 contains all the information required by R.I. Gen. Laws  
 §34-36.1-1.09.

By: *ALEC R. TESA*  
 Dated: 12-20-2022

Issues

Number	Date	Description
01	12-20-22	DIMENSIONAL AS-BUILTS

Received For Record  
 TOWN CLERK  
 JAMESTOWN, R.I.  
 HPF 12-20-22 10:17 PM  
 Vol: 1030 Pg: 218

Checked by: AT Drawn by: RM Project Number: -

Revisions

Number	Date	Description

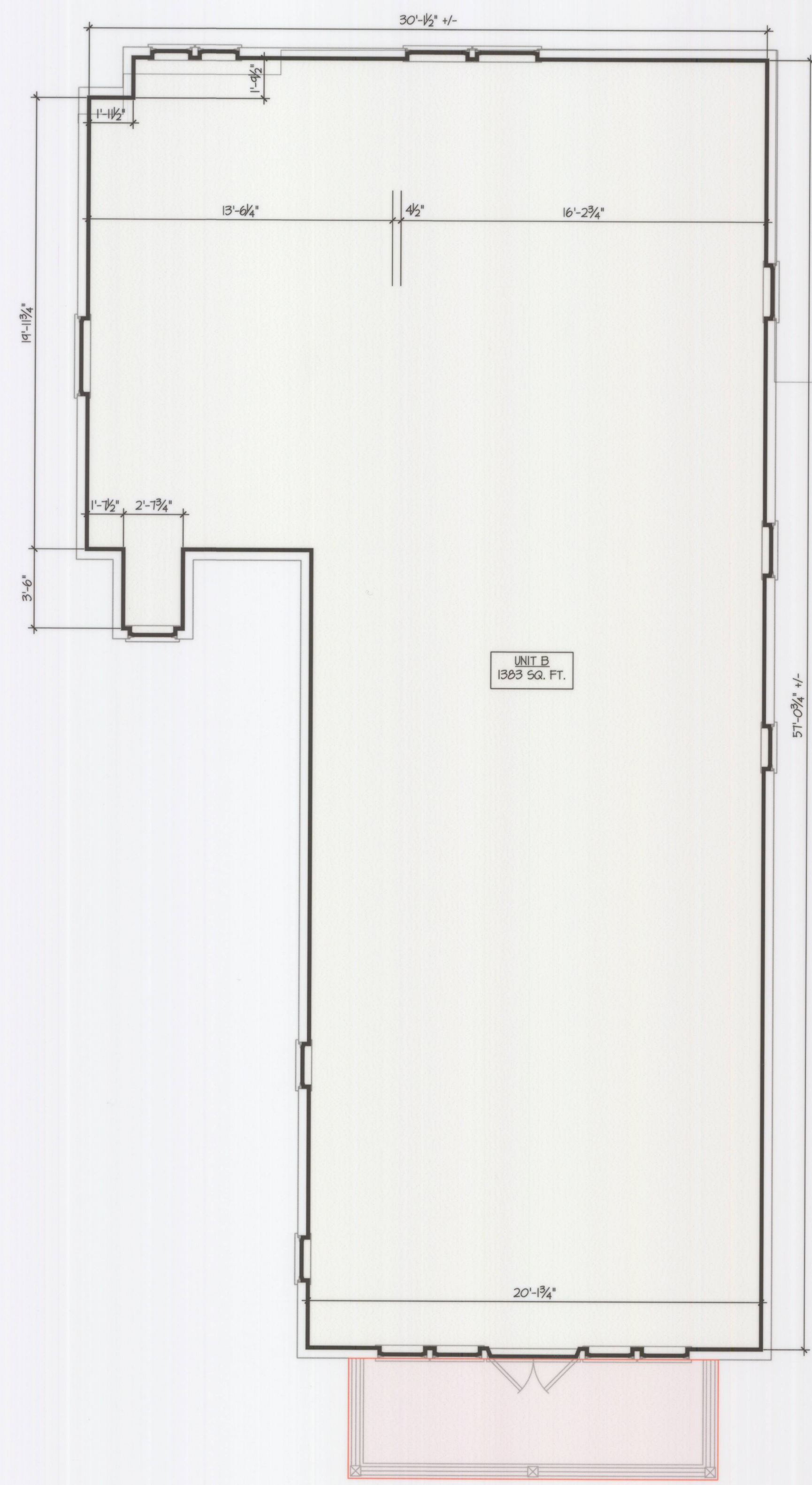
SEAVIEW  
 TOWNHOMES  
 CONDOMINIUM

63 Conanicus Avenue  
 Jamestown, RI

Drawing Scale: AS NOTED Date Issued: 12/20/2022

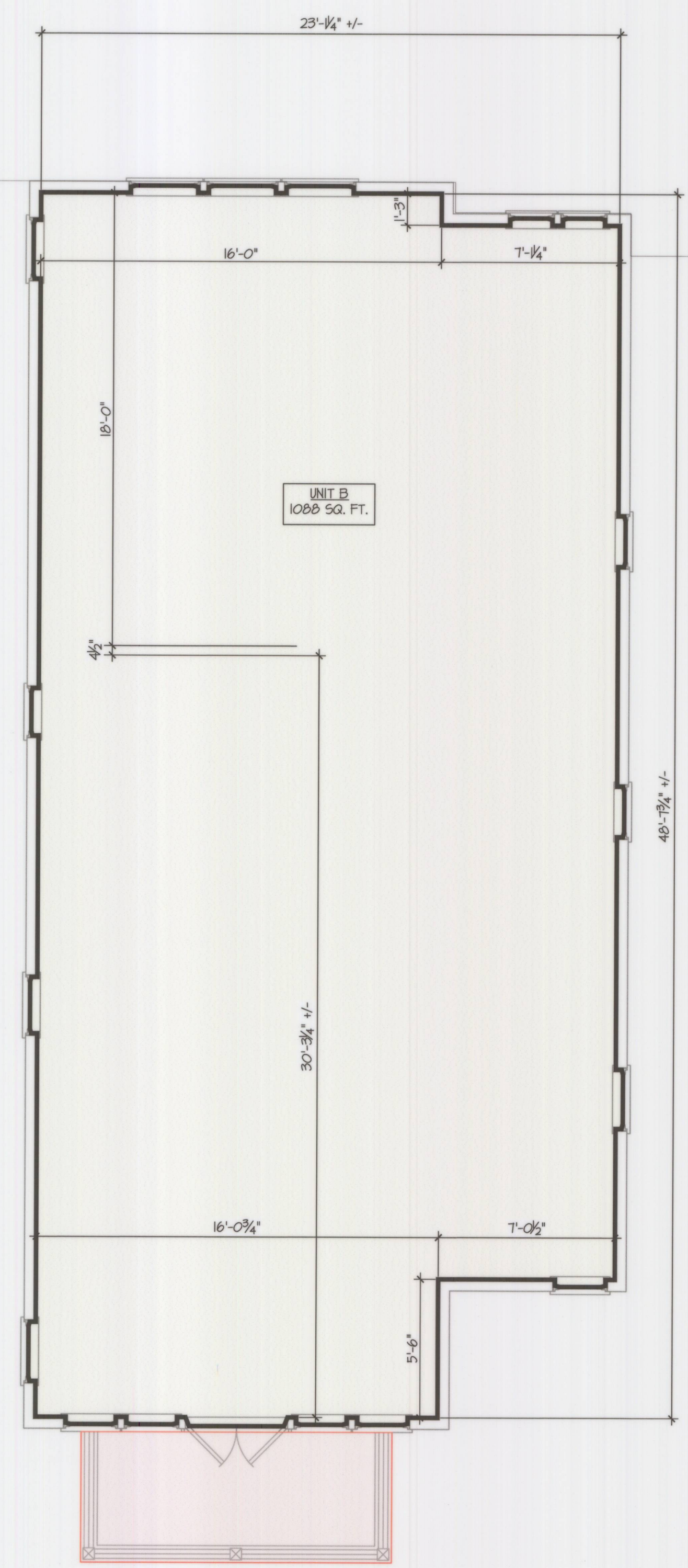
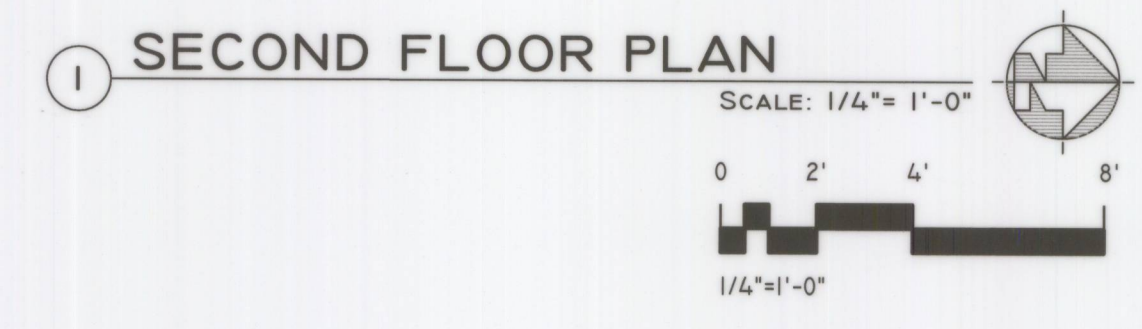
SECOND FLOOR  
 PLANS

A2.2

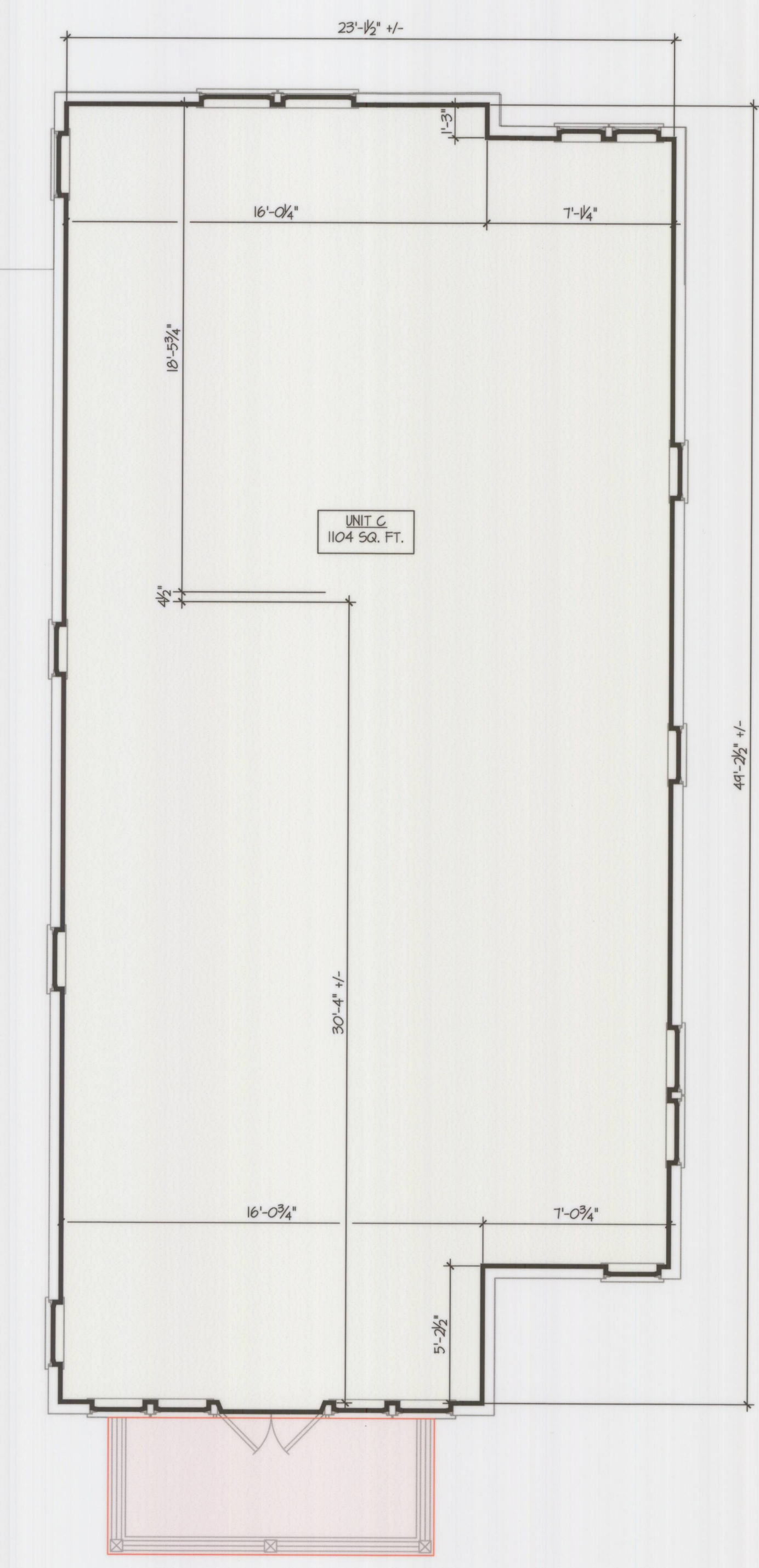


UNIT A  
 UNIT A:  
 PLANS = 3,070 S.F.  
 AS-BUILT = 3,056 S.F.

LEGEND:  
 LIMITED COMMON ELEMENT



UNIT B  
 UNIT B:  
 PLANS = 2,460 S.F.  
 AS-BUILT = 2,443 S.F.



UNIT C  
 UNIT C:  
 PLANS = 2,466 S.F.  
 AS-BUILT = 2,467 S.F.