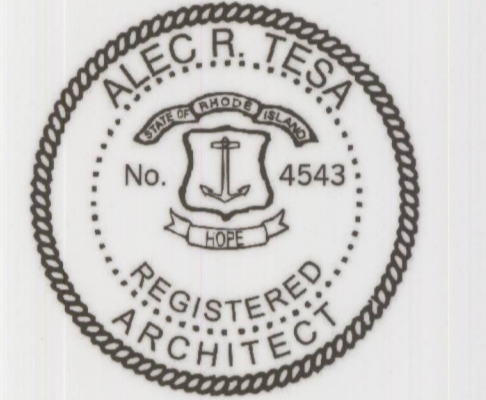




**DIMENSIONAL AS-BUILT SET**  
12/20/22



**Condominium Plans**  
**SEAVIEW TOWNHOMES CONDOMINIUM**  
63 Conanicus Avenue  
Jamestown, Rhode Island  
Assessor's Plat 8, Lot 181  
Declarant: SEATH, L.L.C, a Rhode Island limited liability company  
Survey must be certified as follows:  
The Undersigned hereby certifies that this Plat Survey contains all the information required by R.I. Gen. Laws §34-36.1-1.09.

By: *ALEC.R. TESA*  
Dated: 12.20.2022

Issues

Number	Date	Revised	Description	Record
01	12-20-22	NO	DIMENSIONAL AS-BUILTS	
			JAMESTOWN, R.I.	
			JAN 11, 2023 08:47 PM	
			Vol: 1030 Pg: 217	

Checked by: AT      Drawn by: RM      Project Number:

Revisions

Number	Date	Description

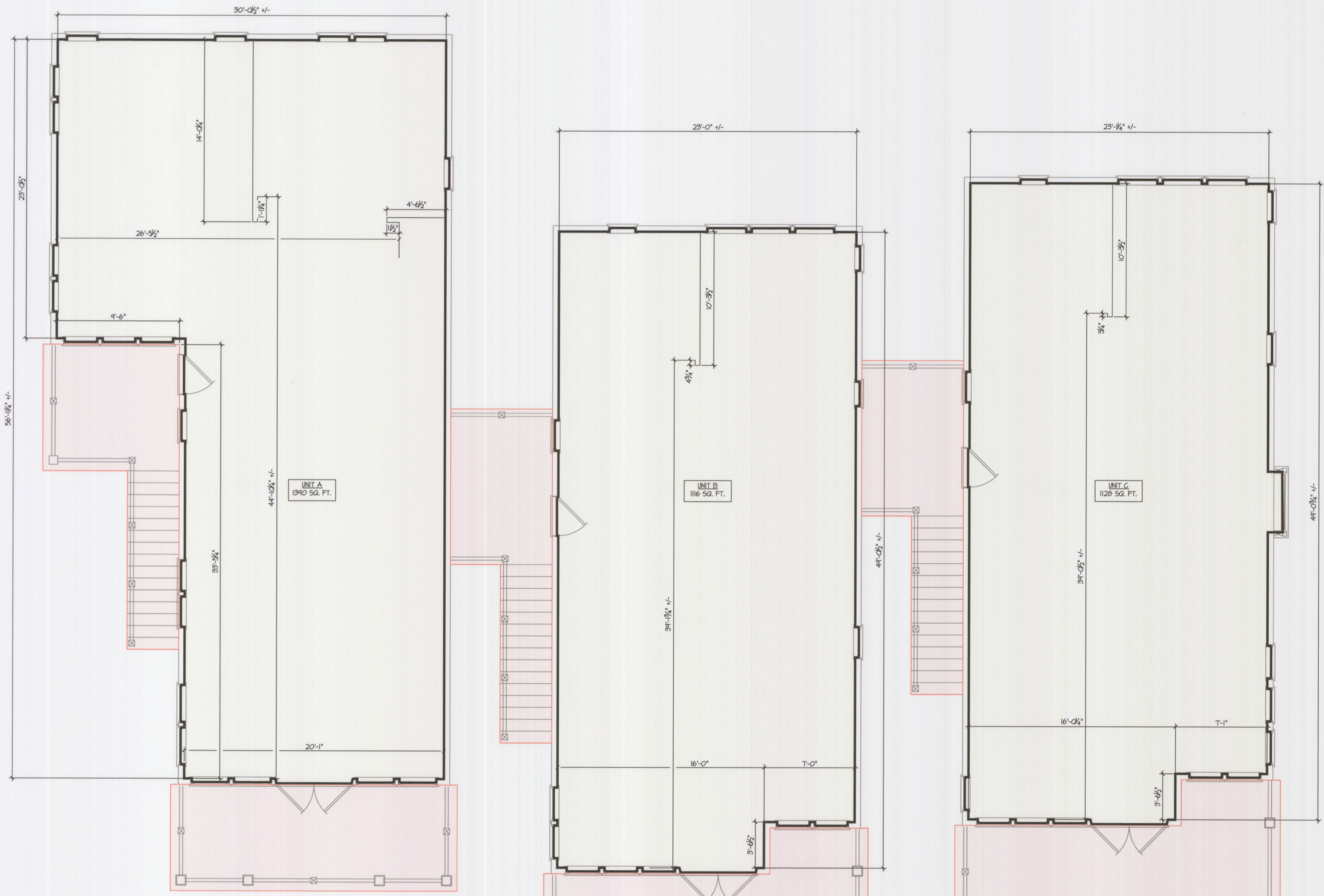
**SEAVIEW TOWNHOMES CONDOMINIUM**

63 Conanicus Avenue  
Jamestown, RI

Drawing Scale: AS NOTED      Date Issued: 12/20/2022

**FIRST FLOOR PLANS**

**A2.1**



**UNIT A**      **UNIT A:**  
PLANS = 3,070 S.F.  
AS-BUILT = 3,056 S.F.

**UNIT B**      **UNIT B:**  
PLANS = 2,460 S.F.  
AS-BUILT = 2,443 S.F.

**UNIT C**      **UNIT C:**  
PLANS = 2,466 S.F.  
AS-BUILT = 2,467 S.F.

**LEGEND:**  
LIMITED COMMON ELEMENT

