

HPF 402A

THIS SURVEY AND PLAN CONFORM TO A CLASS "1" STANDARD AS ADOPTED BY THE RHODE ISLAND SOCIETY OF PROFESSIONAL LAND SURVEYORS.

BY *John D. Andrews*

NOTE:  
2004 207 100030404  
2011 999-1-12

By *John D. Andrews*  
Date: 11/11/96  
Title: S.U.B.  
Map: 100030404  
Scale: 1" = 20'  
Call: 999-1-12

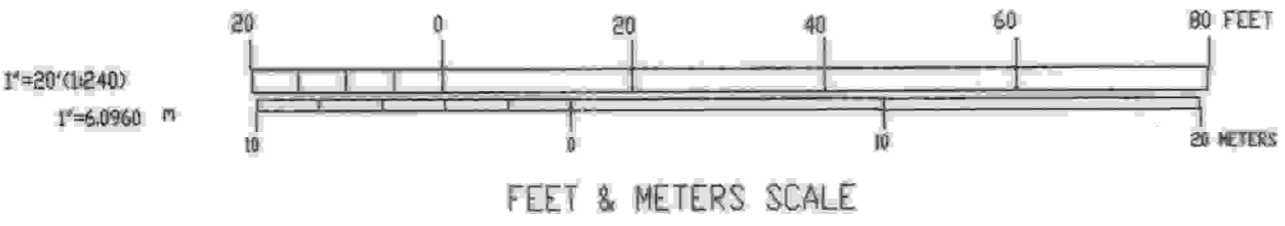
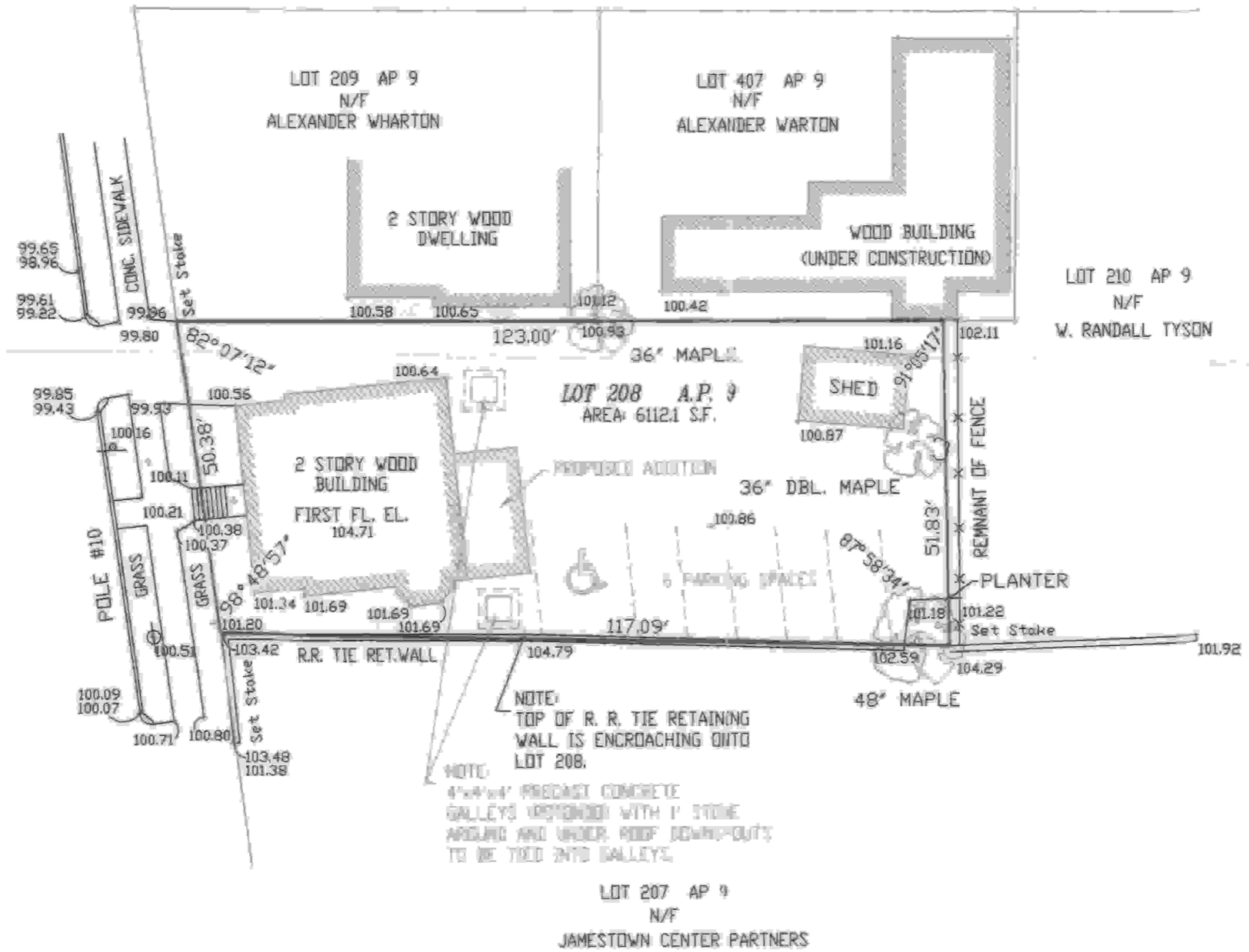


CLINTON AVENUE  
(PUBLIC - 40' WIDTH)

LEGEND

- CB CATCH BASIN
- ⊕ POLE #1 UTILITY POLE
- ⊕ SIGN STREET SIGN
- SMH SEWER MANHOLE
- DMH DRAIN MANHOLE
- EMH ELECT MANHOLE
- TMH TELEPHONE MANHOLE
- DU — OVERHEAD UTILITIES
- E — ELECTRIC
- S — SPRINKLER LINES
- D — STORM DRAIN
- S — SANITARY LINE
- ⊕ HYD FIRE HYDRANT
- ⊕ LIGHT
- F — FENCE
- WG WATER GATE
- I.P.G. FIRE SHUT OFF
- 10 — EXISTING CONTOURS
- SPOT ELEVATION
- POINT OF APPLICATION
- 🌳 TREE
- 🌲 PINE TREE

NARRAGANSETT AVENUE  
(PUBLIC - 60' WIDTH)



DATE	BY
NOV. 26, 1996	BSA
NOV. 11, 1996	BSA

DATE	BY

SURVEY OF LAND  
BELONGING TO  
**DR. KARL SLICK**  
JAMESTOWN, RHODE ISLAND  
DATE: NOVEMBER 4, 1996  
SCALE: 1" = 20'

UDM  
Uniform Digital Mapping, Inc.

14 Imperial Road  
Suite 200  
Providence, RI

HPF 402A  
DEC - 5 1996

401-949-2083  
RONALD G. REISMAN

401-831-6640  
JOHN D. ANDREWS  
No. 1836  
REGISTERED PROFESSIONAL LAND SURVEYOR  
South Main St  
Providence, RI

PROJ. NO.	
DWN. JDA	
DWN. JDA	