

THE TOWN OF JAMESTOWN, RI

Public Shoreline Access & Rights-of-Way



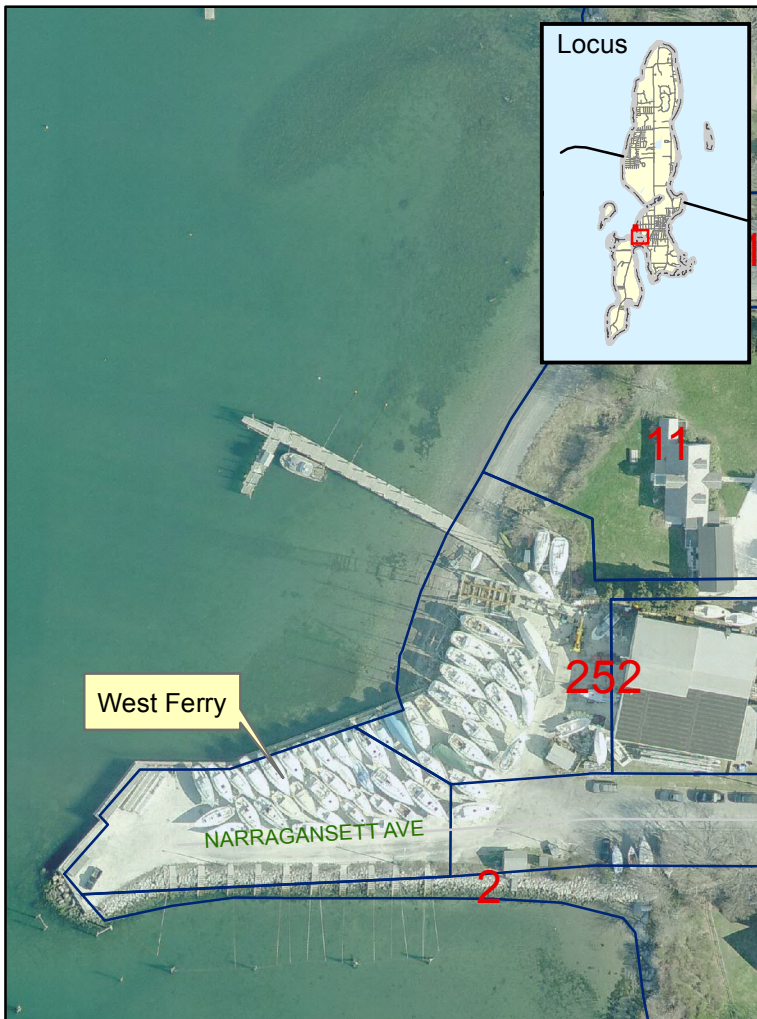
Site #39: West Ferry
Public ROW
Plat 9



Street View



Shoreline View



Aerial View

Description:

At the western end of Narragansett Blvd, West Ferry includes parking for 18 vehicles (with town pass) and a public pier. Rocky shoreline and muddy beach extend to the south towards Sheffield Cove.

Recommendation from 1999 Report:

This public access area will be fully accessible and is given a priority rating of 1.