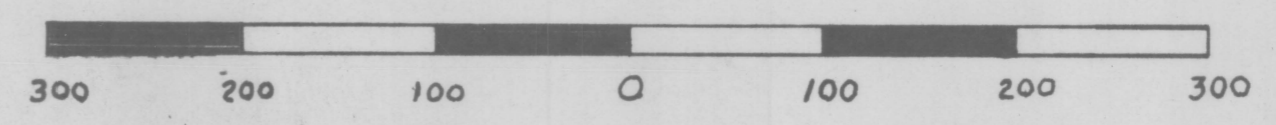
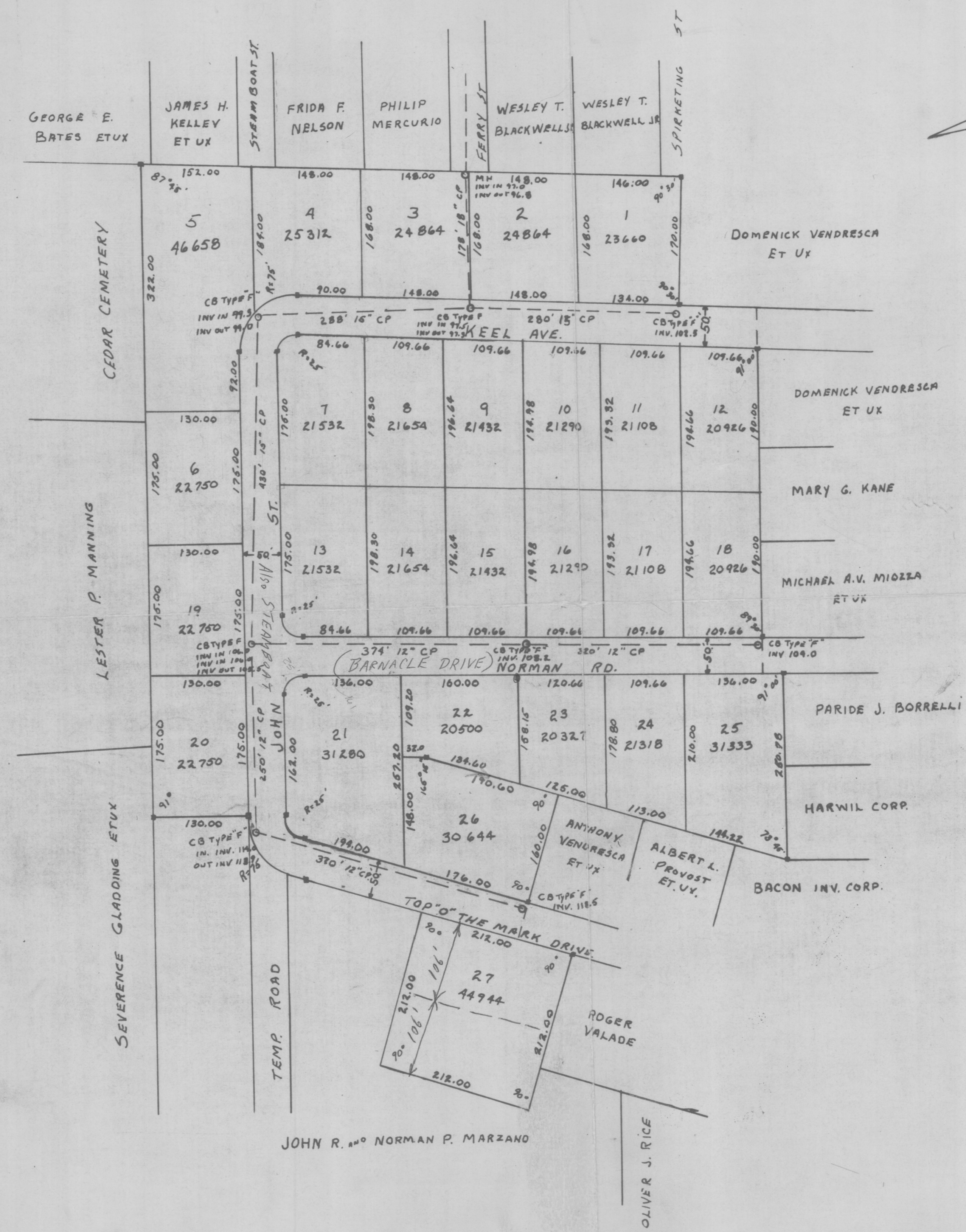


HPF300A

Do Not Use
NOTE:
INKED CHANGES
(NOT AUTHORIZED)



III # 40M 0' 10'

Approved by Jamestown Planning
6-27-67 / Clement A. De Lucia, Chairman



PLAN OF LAND BELONGING TO
 JOHN R. AND NORMAN P. MARZANO
 SUBDIVISION #2
TOP O' THE MARK
 JAMESTOWN, R.I. JUNE 22, 1967