

TOP "O" THE MARK

SUBDIVISION NO. 1.

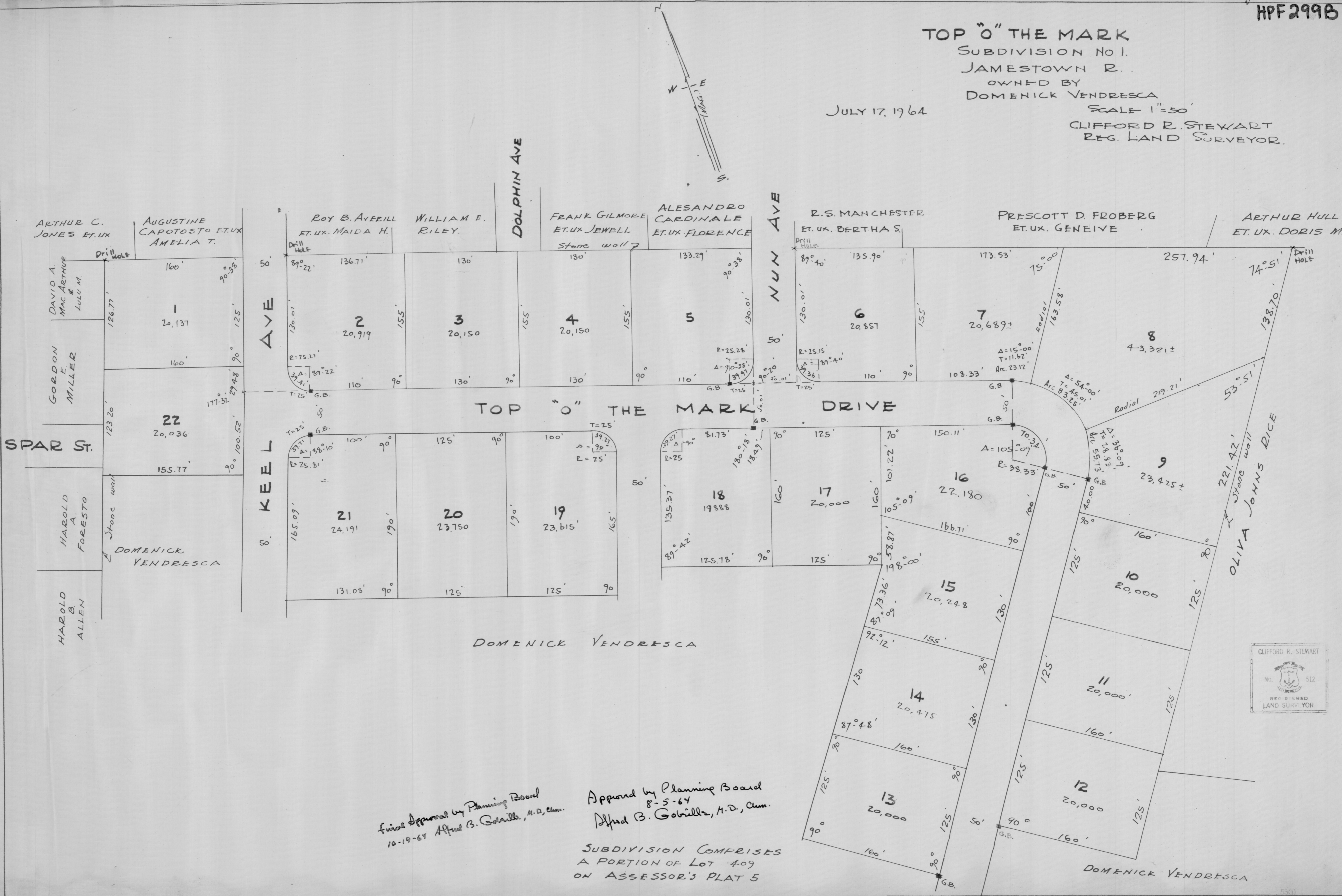
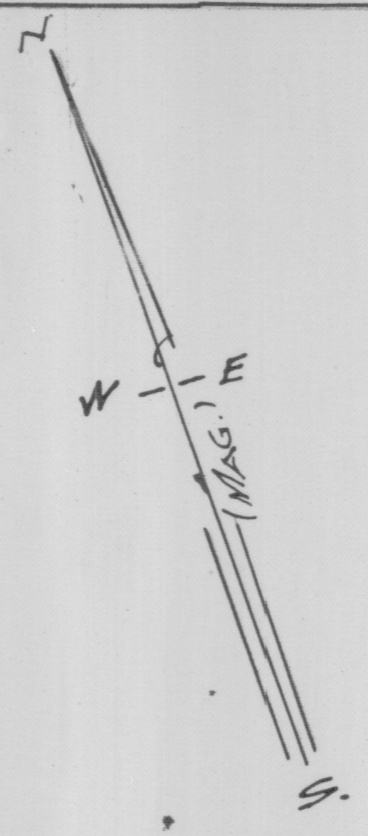
JAMESTOWN P.

OWNED BY DOMENICK VENDRESCA

SCALE 1"=50'

CLIFFORD R. STEWART
REG. LAND SURVEYOR.

JULY 17, 1964



Final Approval by Planning Board
10-19-64 Alfred B. Gorrilla, M.D., Chm.

Approved by Planning Board
8-5-64 Alfred B. Gorrilla, M.D., Chm.

SUBDIVISION COMPRISES
A PORTION OF LOT 409
ON ASSESSOR'S PLAT 5

