

# THE TOWN OF JAMESTOWN, RI

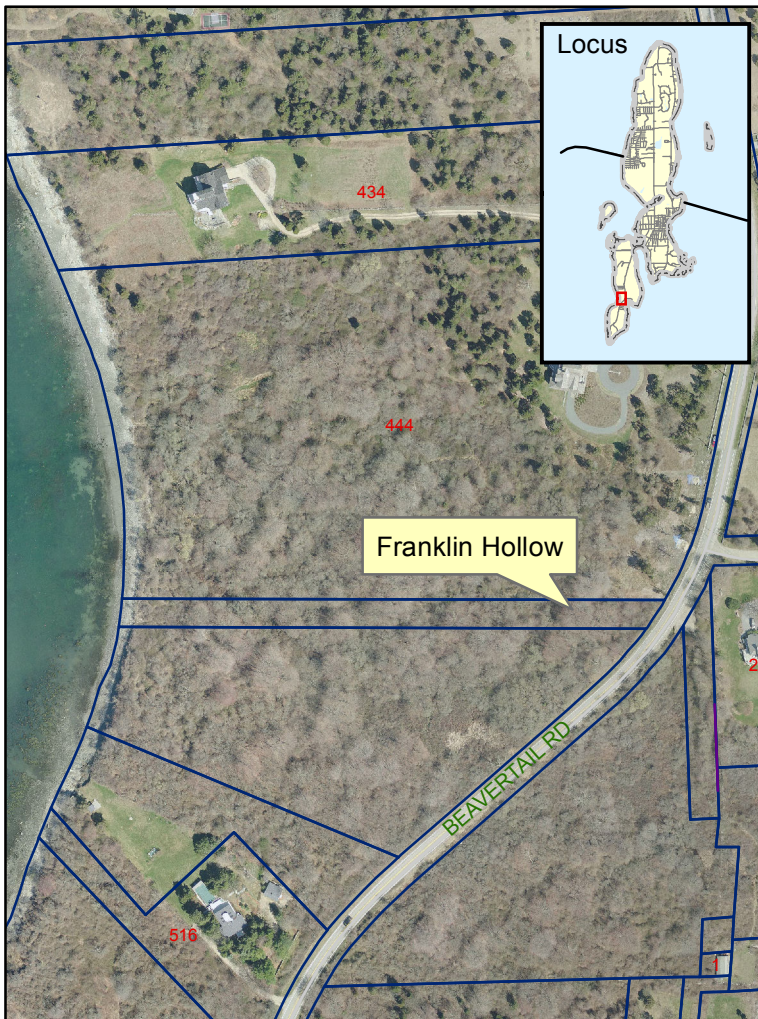
## Public Shoreline Access & Rights-of-Way



Site #33:  
Franklin Hollow  
Potential ROW  
Plat 12



Overview



Aerial View

### Description:

This pathway runs north and south along the waterfront of Franklin Hollow. It is not accessible without crossing private land. There is a steep drop to a stony beach at the end of the path.

### Recommendation from 1999 Report:

Because this path is not accessible from Beavertail Road, there is no priority rating given to this site.