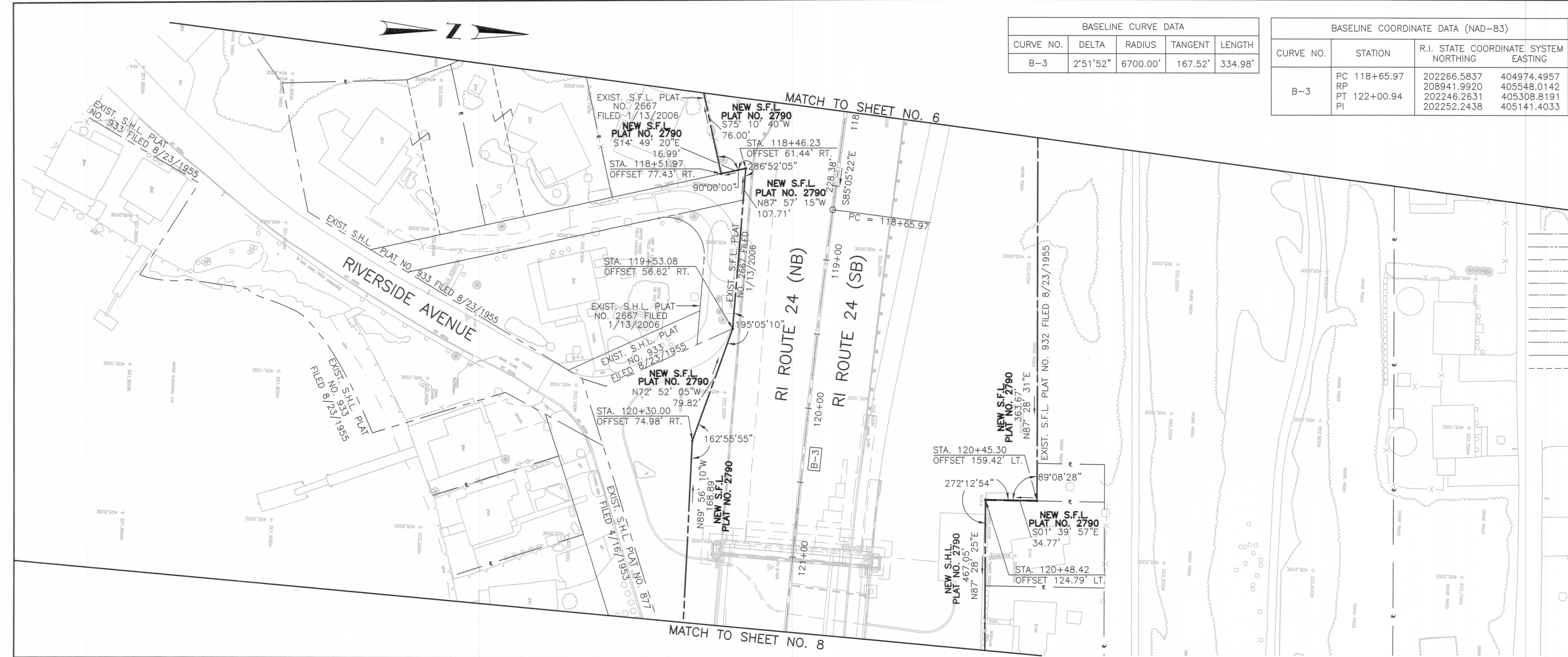


X:\000000002_00 Sakonnet River Bridge\Drawings\Transportation\ROW\RT\B\PORTSMOUTH\PLAT\ROW_2790_007_PLAT004.dwg, 4/22/2013 10:14:32 AM, SMS



FED. ROAD DIV. NO.	STATE	FEDERAL AID PROJECT NO.	FISCAL YEAR	SHEET NO.	TOTAL SHEETS	RHODE ISLAND DEPARTMENT OF TRANSPORTATION	
1	RI		2013	7	8		

- LEGEND**
- ① = PARCEL NUMBER
 - 00/00 = ASSESSOR'S PLAT/LOT NUMBER
 - T = TOTAL AREA
 - A = AREA ACQUIRED
 - R = REMAINING AREA
 - B = TEMPORARY EASEMENT AREA
 - C = PERMANENT AERIAL EASEMENT AREA
 - D = PERMANENT DRAINAGE EASEMENT AREA
 - G = PERMANENT GUY EASEMENT AREA
 - P = PERMANENT EASEMENT AREA
 - U = PERMANENT UTILITY AREA
 - S.F.L. = STATE FREEWAY LINE
 - S.H.L. = STATE HIGHWAY LINE
 - P = EXISTING PROPERTY LINE
 - T.E.B. = TEMPORARY EASEMENT BOUNDARY LINE
 - P.A.B. = PERMANENT AERIAL EASEMENT BOUNDARY LINE
 - P.D.B. = PERMANENT DRAINAGE EASEMENT BOUNDARY LINE
 - P.G.B. = PERMANENT GUY EASEMENT BOUNDARY LINE
 - P.E.B. = PERMANENT EASEMENT BOUNDARY LINE
 - P.U.B. = PERMANENT UTILITY EASEMENT BOUNDARY LINE
 - T.U.B. = TEMPORARY UTILITY EASEMENT BOUNDARY LINE
 - NEW R.I.H.B. = NEW R.I.H.B.
 - TOWN / CITY STREET LINE

**SAKONNET RIVER
BRIDGE TRANSFER**

PORTSMOUTH RHODE ISLAND

SCALE: 40 FEET PER INCH
SHEET 7 OF 8
PLAT NO: 2790