

I:\03000\03062.00 Sakonnet River Bridge\Drawings\Transportation\ROW\RTTB\PORTSMOUTH\PLAT\RTTB\ROW_005_PLAT002.dwg, 4/30/2013 1:05:52 PM, SMS

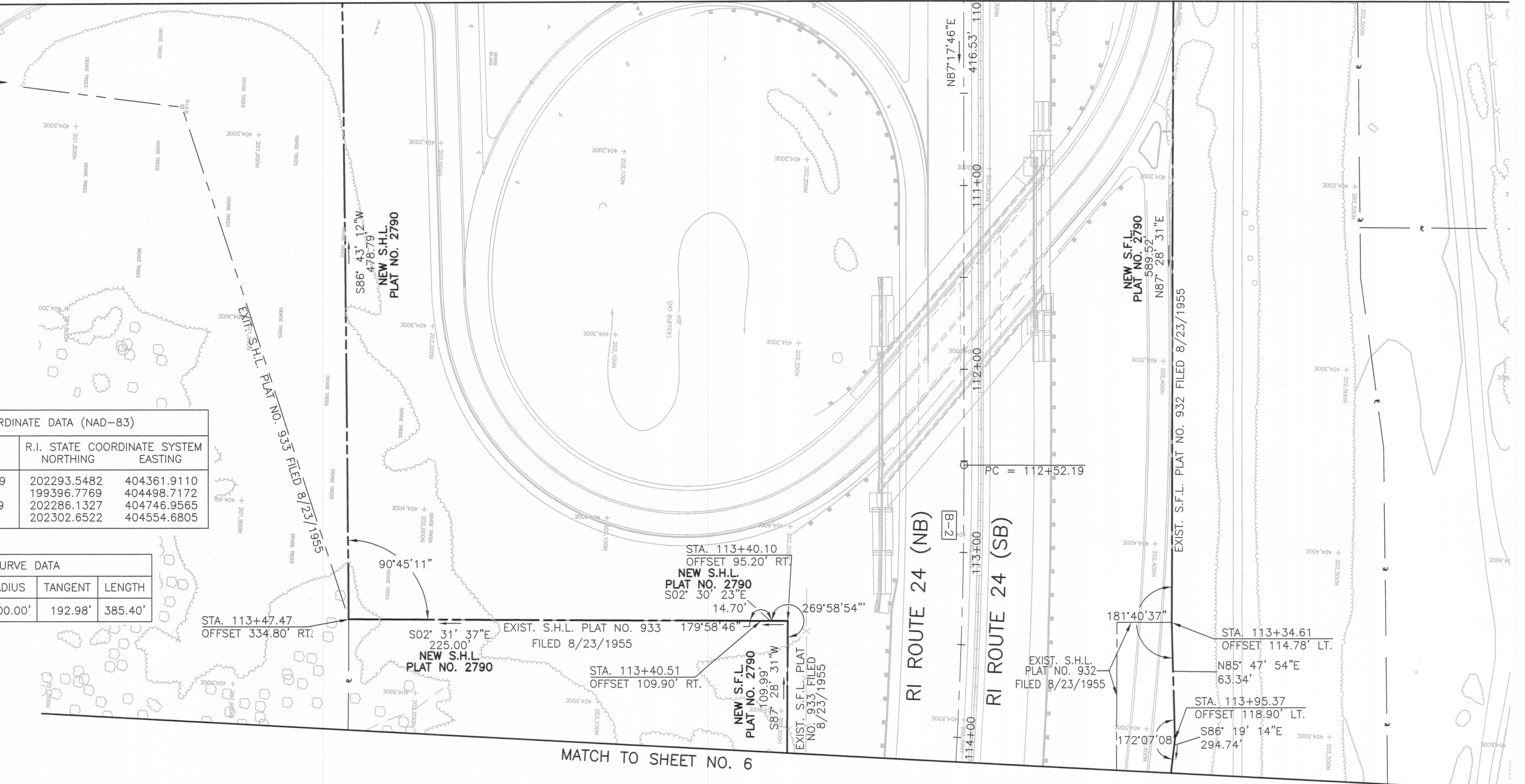
MATCH TO SHEET NO. 4

FED. ROAD DIV. NO.	STATE	FEDERAL AID PROJECT NO.	FISCAL YEAR	SHEET NO.	TOTAL SHEETS	RHODE ISLAND DEPARTMENT OF TRANSPORTATION	
1	RI		2013	5	8		



BASELINE COORDINATE DATA (NAD-83)			
CURVE NO.	STATION	R.I. STATE COORDINATE SYSTEM NORTHING	EASTING
B-2	PC 112+52.19	202293.5482	404361.9110
	RP	199396.7769	404498.7172
	PT 116+37.59	202286.1327	404746.9565
	PI	202302.6522	404554.6805

BASELINE CURVE DATA				
CURVE NO.	DELTA	RADIUS	TANGENT	LENGTH
B-2	7°36'52"	2900.00'	192.98'	385.40'



MATCH TO SHEET NO. 6

- LEGEND**
- ① = PARCEL NUMBER
 - 00/00 = ASSESSOR'S PLAT/LOT NUMBER
 - T = TOTAL AREA
 - A = AREA ACQUIRED
 - R = REMAINING AREA
 - B = TEMPORARY EASEMENT AREA
 - C = PERMANENT AERIAL EASEMENT AREA
 - D = PERMANENT DRAINAGE EASEMENT AREA
 - G = PERMANENT GUY EASEMENT AREA
 - P = PERMANENT EASEMENT AREA
 - U = PERMANENT UTILITY AREA
 - S.F.L. = STATE FREEWAY LINE
 - S.H.L. = STATE HIGHWAY LINE
 - R = EXISTING PROPERTY LINE
 - T.E.B. = TEMPORARY EASEMENT BOUNDARY LINE
 - P.A.B. = PERMANENT AERIAL EASEMENT BOUNDARY LINE
 - P.D.B. = PERMANENT DRAINAGE EASEMENT BOUNDARY LINE
 - P.G.B. = PERMANENT GUY EASEMENT BOUNDARY LINE
 - P.E.B. = PERMANENT EASEMENT BOUNDARY LINE
 - P.U.B. = PERMANENT UTILITY EASEMENT BOUNDARY LINE
 - T.U.B. = TEMPORARY UTILITY EASEMENT BOUNDARY LINE
 - NEW R.I.H.B. = NEW R.I.H.B.
 - TOWN / CITY STREET LINE = TOWN / CITY STREET LINE

**SAKONNET RIVER
BRIDGE TRANSFER**

PORTSMOUTH RHODE ISLAND

SCALE: 40 FEET PER INCH
SHEET 5 OF 8
PLAT NO: 2790