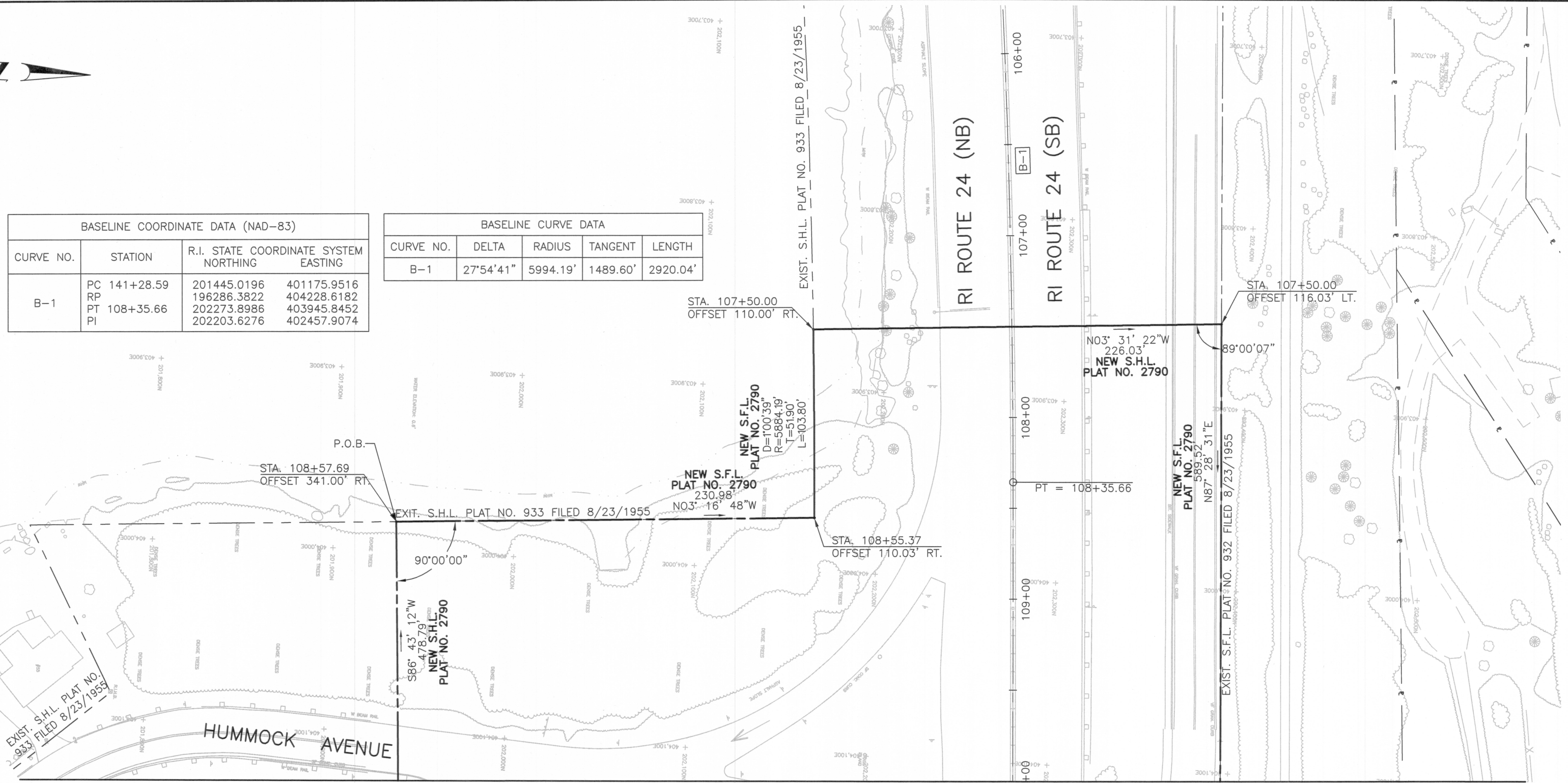


1:\03000000\002.00 Sakonnet River Bridge\Drawings\Transportation\ROW\ROW-RT\B\PORTSOUTH\PLAT\SHOW\_2790\_004\_PLAT001.dwg 4/25/2013 10:04:22 AM SMS



BASELINE COORDINATE DATA (NAD-83)			
CURVE NO.	STATION	R.I. STATE COORDINATE SYSTEM NORTHING	EASTING
B-1	PC 141+28.59	201445.0196	401175.9516
	RP	196286.3822	404228.6182
	PT 108+35.66	202273.8986	403945.8452
	PI	202203.6276	402457.9074

BASELINE CURVE DATA				
CURVE NO.	DELTA	RADIUS	TANGENT	LENGTH
B-1	27°54'41"	5994.19'	1489.60'	2920.04'



EXIST. S.H.L. PLAT NO. 933 FILED 8/23/1955

HUMMOCK AVENUE

MATCH TO SHEET NO. 5

FED. ROAD DIV. NO.	STATE	FEDERAL AID PROJECT NO.	FISCAL YEAR	SHEET NO.	TOTAL SHEETS	RHODE ISLAND DEPARTMENT OF TRANSPORTATION
1	RI		2013	4	8	

**LEGEND**

- ① = PARCEL NUMBER
- 00/00 = ASSESSOR'S PLAT/LOT NUMBER
- T = TOTAL AREA
- A = AREA ACQUIRED
- R = REMAINING AREA
- B = TEMPORARY EASEMENT AREA
- C = PERMANENT AERIAL EASEMENT AREA
- D = PERMANENT DRAINAGE EASEMENT AREA
- G = PERMANENT GUY EASEMENT AREA
- P = PERMANENT EASEMENT AREA
- U = PERMANENT UTILITY AREA
- S.F.L. = STATE FREEWAY LINE
- S.H.L. = STATE HIGHWAY LINE
- PL = EXISTING PROPERTY LINE
- T.E.B. = TEMPORARY EASEMENT BOUNDARY LINE
- P.A.B. = PERMANENT AERIAL EASEMENT BOUNDARY LINE
- P.D.B. = PERMANENT DRAINAGE EASEMENT BOUNDARY LINE
- P.G.B. = PERMANENT GUY EASEMENT BOUNDARY LINE
- P.E.B. = PERMANENT EASEMENT BOUNDARY LINE
- P.U.B. = PERMANENT UTILITY EASEMENT BOUNDARY LINE
- T.U.B. = TEMPORARY UTILITY EASEMENT BOUNDARY LINE
- NEW R.I.H.B. = NEW R.I.H.B.
- TOWN / CITY STREET LINE = TOWN / CITY STREET LINE

**SAKONNET RIVER  
BRIDGE TRANSFER**

PORTSMOUTH RHODE ISLAND

SCALE: 40 FEET PER INCH  
SHEET 4 OF 8  
PLAT NO: 2790