

THE TOWN OF JAMESTOWN, RI

Public Shoreline Access & Rights-of-Way



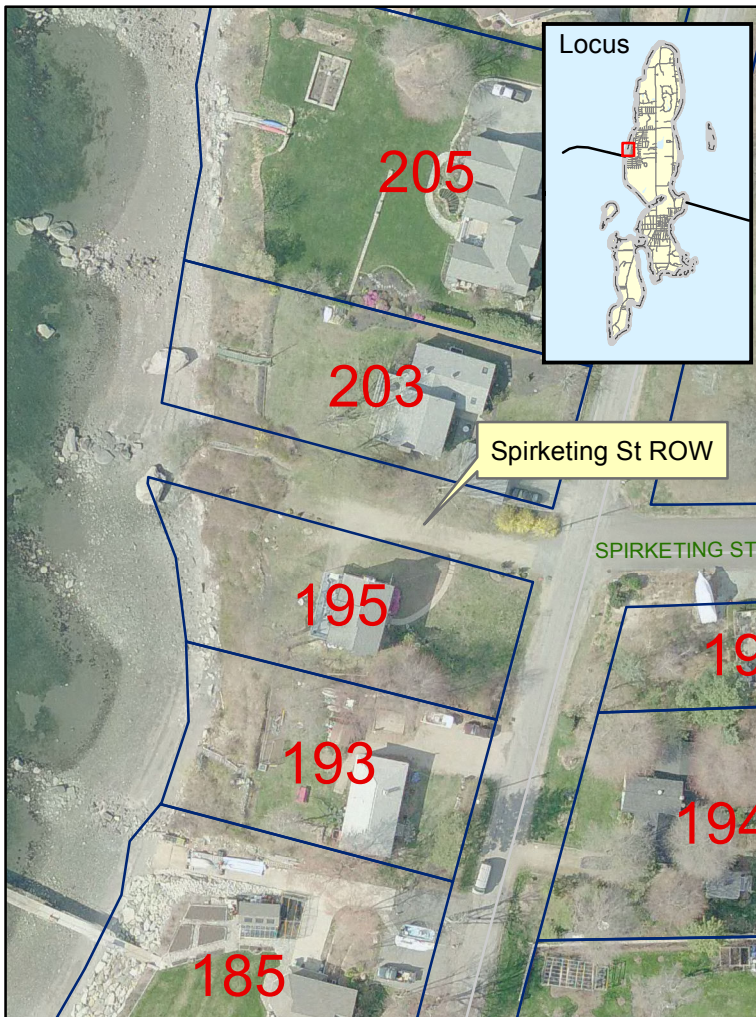
Site #6: Spirketing St
CRMC G-2
Plat 5 & 15



Street View



Shoreline View



Aerial View

Description:

Access to the shoreline is westerly off Seaside Drive. This is a grassy strip with cedar trees on the northern side. The grassy area is being used as a driveway by the southerly abutter. The strip ends with a metal stairway set in concrete footings which traverses a 20 foot embankment. The cobble beach has several large boulders and many small rock jetties.

Recommendation from 1999 Report:

Due to the close proximity of neighbors, steep descent to the shoreline, limited shoreline access, lack of parking, and nearby accessibility of two large shoreline access areas with facilities (proposed Eldred Avenue and Jamestown Shores Beach) this potential right-of-way is given a priority rating of 3.

PHOTOS OF PUBLIC SHORELINE ACCESS & RIGHTS-OF-WAY

Site #6: Spirketing Street Right-of-Way (G-2)



View from Seaside Drive



Grassy Area maintained by Abutters

PHOTOS OF PUBLIC SHORELINE ACCESS & RIGHTS-OF-WAY



View of Existing Narrow Staircase

