

THE TOWN OF JAMESTOWN, RI
*Public Shoreline Access
 & Rights-of-Way*



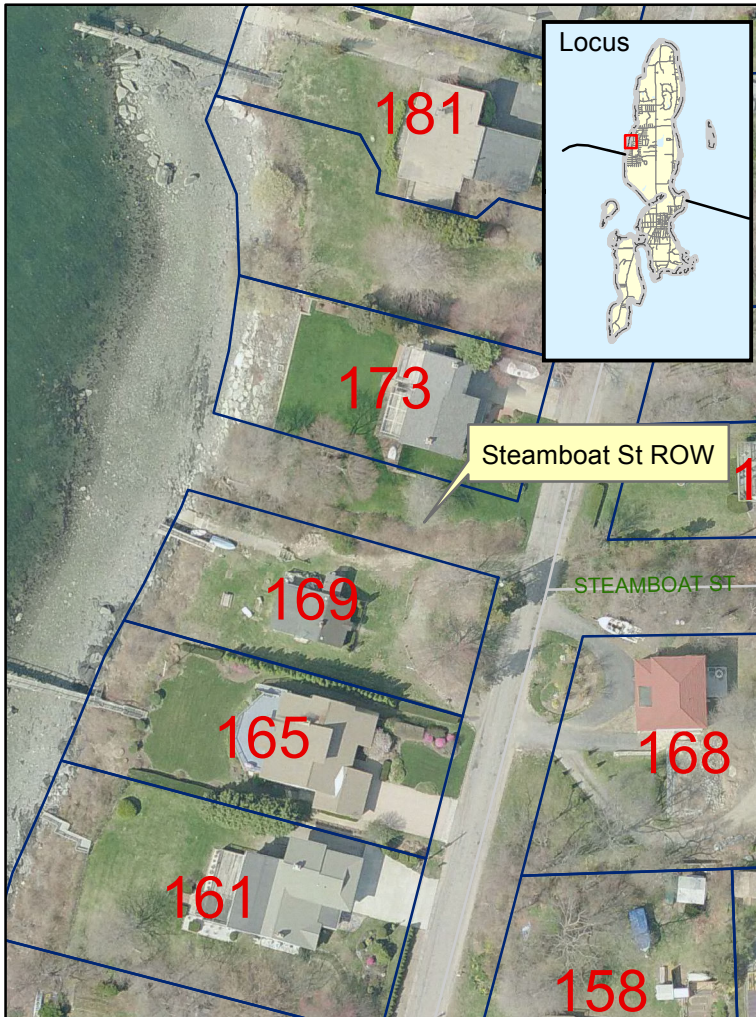
*Site #5: Steamboat St
 CRMC G-3
 Plat 5*



Street View



Shoreline View



Aerial View

Description:

This ROW is located in the Jamestown Shores neighborhood between 173 and 169 Seaside Drive. Access to the shore is westerly from Seaside. A path through the ROW to the coast was permitted by CRMC and completed by an abutter in the summer of 2012. This ROW continues to be maintained by the abutter. There was encroachment by an abutter from the north. The path slopes gently to a cobble beach.

Recommendation from 1999 Report:

Due to the close proximity of neighbors, steep descent to the shoreline, limited shoreline access, lack of parking, and nearby accessibility of two large shoreline access areas with facilities (proposed Eldred Avenue and Jamestown Shores Beach) this potential right-of-way is given a priority rating of 3.

Site #5: Steamboat Street Right-of-Way (G-3)



View from Seaside Drive. Cleared in 2011



PHOTOS OF PUBLIC SHORELINE ACCESS & RIGHTS-OF-WAY



View looking West



View looking East