

REVISIONS:

John S. Hester
Chairman, Planning Commission
Approved 16 Nov 1977

**EAST PASSAGE ESTATES
SECTION I**
JAMESTOWN, RHODE ISLAND
COMMERCE OIL REFINING CORPORATION

RAYMOND W. SCHWAB
ASSOCIATES, INC.
11 NORTH ROAD
PEACE DALE, R. I.

JOB NO: RC1060976 A

DATE: Oct. 19, 1977

SCALE: 1" = 100'

DRAWN BY: D&B

CHECKED BY: AW

SHEET NO.

OTHER LAND OF
COMMERCE OIL REFINING CORPORATION

CENTERLINE CURVE DATA

- A⁴ ARC = 191.81'
Δ = 40°-00'-00"
CH. = 187.94'
RAD. = 274.75'
- A⁵ ARC = 760.62'
Δ = 91°-25'-15"
CH. = 682.46'
RAD. = 476.70'
- B³ ARC = 581.19'
Δ = 90°-00'-00"
CH. = 523.26'
RAD. = 370.00'
- B⁴ ARC = 363.47'
Δ = 39°-49'-56"
CH. = 356.19'
RAD. = 522.82'
- E¹ ARC = 198.86'
Δ = 15°-00'-00"
CH. = 198.29'
RAD. = 759.58'

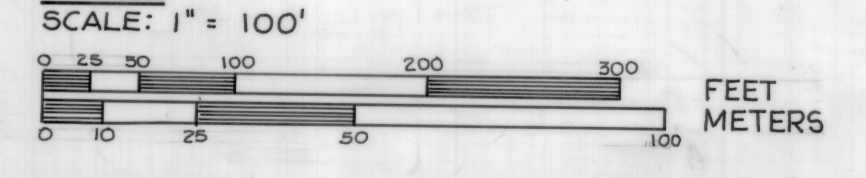
SOIL EROSION CONTROL

TEMPORARY EROSION CONTROL MEASURES SHALL BE IMPLEMENTED AND MAINTAINED DURING AND AFTER CONSTRUCTION UNTIL NATURAL VEGETATION IS RE-ESTABLISHED BY THE USE OF HAY BALE CHECKS, STONE RUBBLE SEDIMENT BASINS AND BY OTHER METHODS AS REQUIRED.

LEGEND

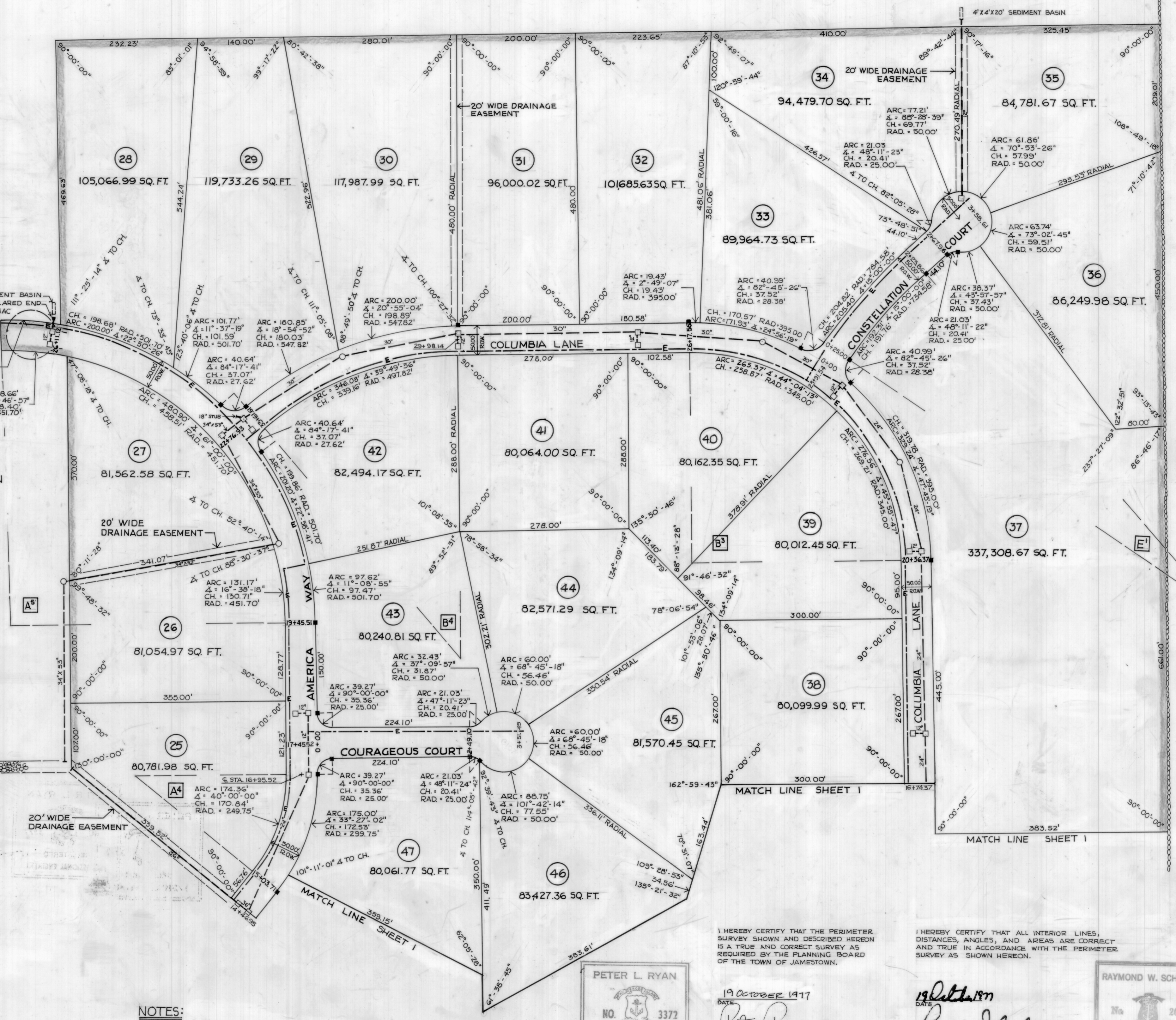
- 339.52' = DISTANCE IN FEET
- Δ = ANGLE
- CH. = CHORD
- RAD. = RADIUS
- = PERMANENT BOUND
- +— = CENTERLINE STATION
- = CATCH BASIN
- = MANHOLE
- = METAL CORRUGATED PIPE - STORM DRAIN
- E- = UNDERGROUND TELEPHONE & ELECTRIC
- = DRILL HOLE
- ▤ = STONE WALL

PLAN



NOTES:

- ALL STREETS AS SHOWN DEDICATED TO THE TOWN OF JAMESTOWN.
- ALL DRAINAGE EASEMENTS AS SHOWN GRANTED TO THE TOWN OF JAMESTOWN.
- ALL STORM DRAINS TO BE METAL CORRUGATED PIPE OR TOWN ENGINEER APPROVED EQUAL.



PETER L. RYAN
NO. 3372
REGISTERED PROFESSIONAL ENGINEER

19 OCTOBER 1977
DATE
Peter Ryan, PE
REGISTERED ENGINEER

I HEREBY CERTIFY THAT THE PERIMETER SURVEY SHOWN AND DESCRIBED HEREON IS A TRUE AND CORRECT SURVEY AS REQUIRED BY THE PLANNING BOARD OF THE TOWN OF JAMESTOWN.

19 October 1977
DATE
Raymond W. Schwab, P.E.
REGISTERED ENGINEER

RAYMOND W. SCHWAB
No. 2067
REGISTERED PROFESSIONAL ENGINEER

DATE FILED: OCTOBER 19, 1977

November 2, 1977