

John T. Heelan
Chairman, Planning Commission
Approved 16 Nov 1977

EAST PASSAGE ESTATES
SECTION I
JAMESTOWN, RHODE ISLAND
COMMERCE OIL REFINING CORPORATION

RAYMOND W. SCHWAB ASSOCIATES, INC.

11 NORTH ROAD
PEACE DALE, R. I.

JOB NO: RC1060976A

DATE: Oct. 19, 1977

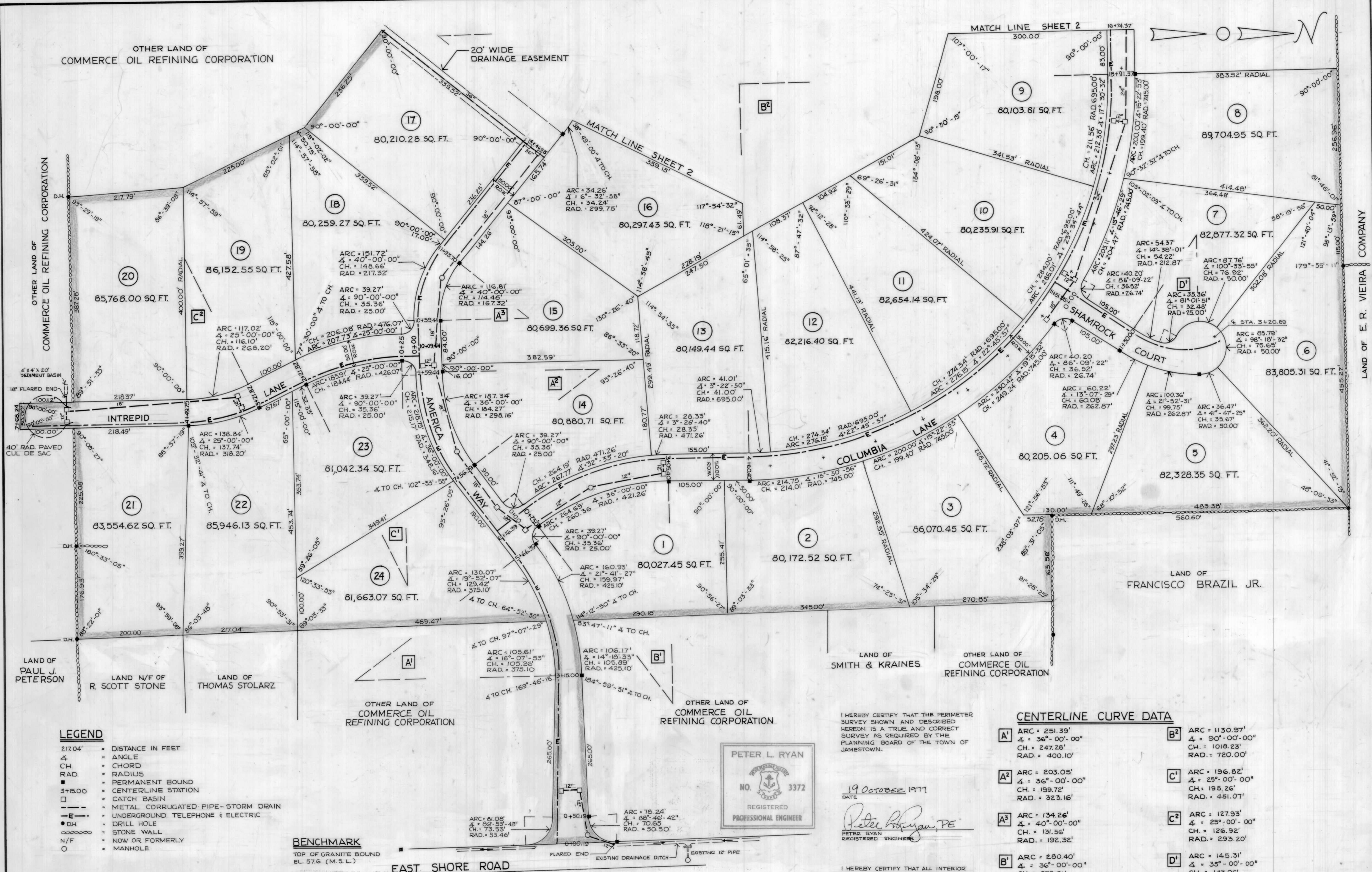
SCALE: 1" = 100'

DRAWN BY: DES

CHECKED BY: A.W.

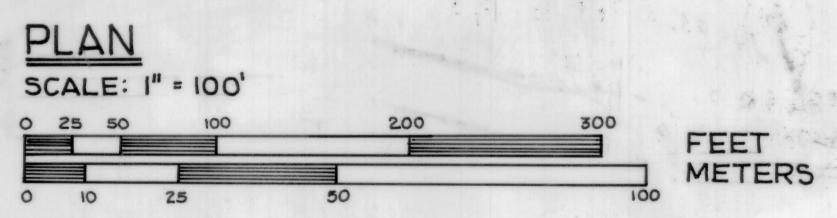
SHEET NO.

OF TWO



- LEGEND**
- 217.04' = DISTANCE IN FEET
 - ∠ = ANGLE
 - CH. = CHORD
 - RAD. = RADIUS
 - = PERMANENT BOUND
 - = CENTERLINE STATION
 - = CATCH BASIN
 - = METAL CORRUGATED PIPE-STORM DRAIN
 - E- = UNDERGROUND TELEPHONE & ELECTRIC
 - DH = DRILL HOLE
 - = STONE WALL
 - N/F = NOW OR FORMERLY
 - = MANHOLE

BENCHMARK
TOP OF GRANITE BOUND
EL. 57.6 (M.S.L.)



NOTES:
ALL STREETS AS SHOWN DEDICATED TO THE TOWN OF JAMESTOWN.
ALL DRAINAGE EASEMENTS AS SHOWN GRANTED TO THE TOWN OF JAMESTOWN.
ALL STORM DRAINS TO BE METAL CORRUGATED PIPE OR TOWN ENGINEER APPROVED EQUAL.

SOIL EROSION CONTROL
TEMPORARY EROSION CONTROL MEASURES SHALL BE IMPLEMENTED AND MAINTAINED DURING AND AFTER CONSTRUCTION UNTIL NATURAL VEGETATION IS REESTABLISHED BY THE USE OF HAY BALE CHECKS, STONE RUBBLE SEDIMENT BASINS AND BY OTHER METHODS AS REQUIRED.

PETER L. RYAN
NO. 3372
REGISTERED PROFESSIONAL ENGINEER

I HEREBY CERTIFY THAT THE PERIMETER SURVEY SHOWN AND DESCRIBED HEREON IS A TRUE AND CORRECT SURVEY AS REQUIRED BY THE PLANNING BOARD OF THE TOWN OF JAMESTOWN.

19 OCTOBER 1977
DATE
Peter L. Ryan, PE
REGISTERED ENGINEER

I HEREBY CERTIFY THAT ALL INTERIOR LINES, DISTANCES, ANGLES, AND AREAS ARE CORRECT AND TRUE IN ACCORDANCE WITH THE PERIMETER SURVEY AS SHOWN HEREON.

19 October 1977
DATE
Raymond W. Schwab, P.E.
REGISTERED PROFESSIONAL ENGINEER

CENTERLINE CURVE DATA

- | | |
|--|--|
| A¹ ARC = 251.39' ∠ = 36°-00'-00" CH. = 247.28' RAD. = 400.10' | B² ARC = 1130.97' ∠ = 90°-00'-00" CH. = 1018.23' RAD. = 720.00' |
| A² ARC = 203.05' ∠ = 25°-00'-00" CH. = 199.72' RAD. = 323.16' | C¹ ARC = 196.82' ∠ = 36°-00'-00" CH. = 195.26' RAD. = 451.07' |
| A³ ARC = 134.26' ∠ = 40°-00'-00" CH. = 131.56' RAD. = 192.32' | C² ARC = 127.93' ∠ = 25°-00'-00" CH. = 126.92' RAD. = 293.20' |
| B¹ ARC = 280.40' ∠ = 36°-00'-00" CH. = 275.81' RAD. = 446.26' | D¹ ARC = 145.31' ∠ = 35°-00'-00" CH. = 143.06' RAD. = 237.87' |

RAYMOND W. SCHWAB
No. 2067
REGISTERED PROFESSIONAL ENGINEER

DATE FILED: OCTOBER 19, 1977

November 2, 1977