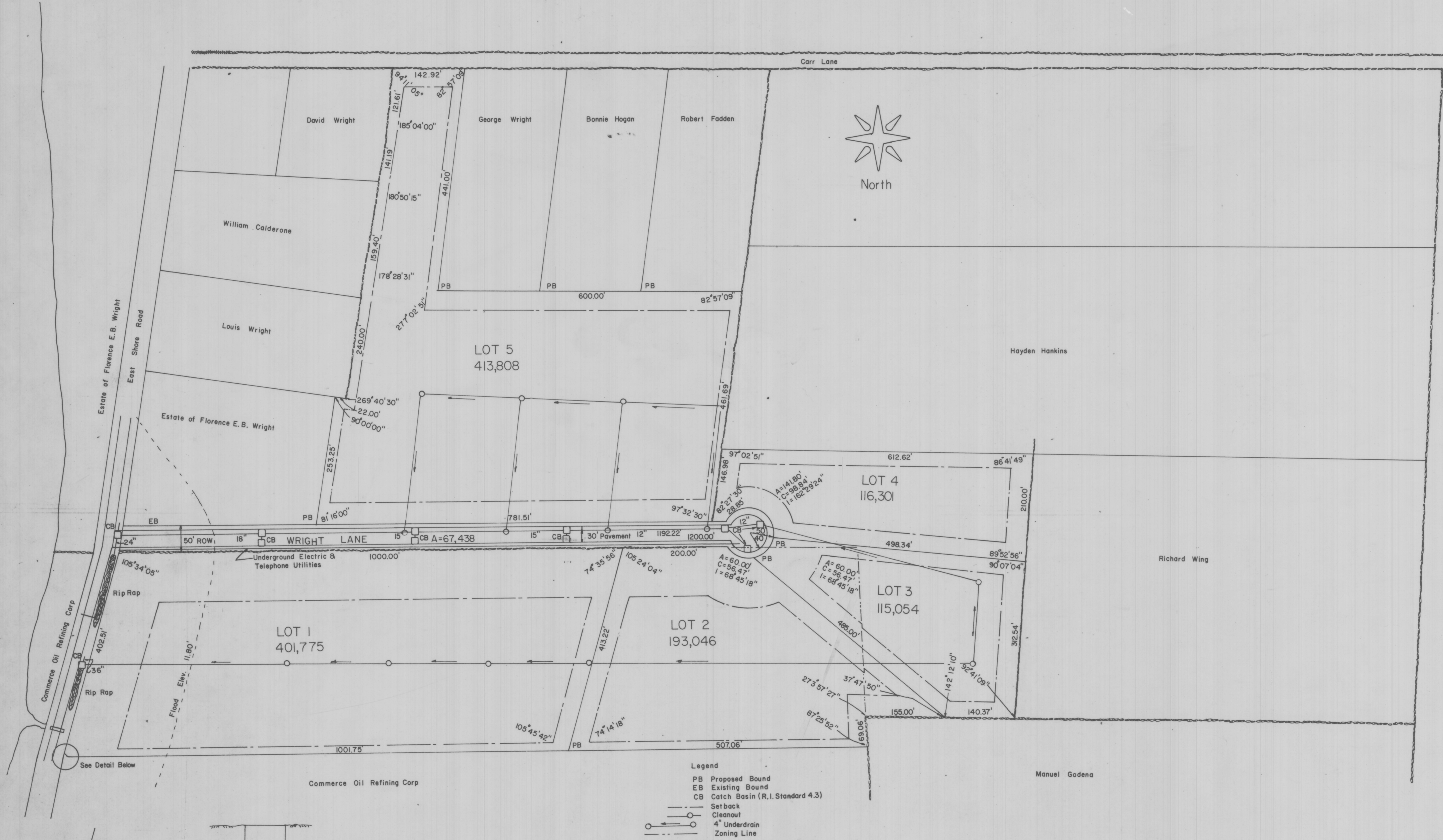
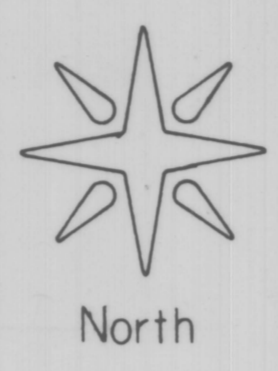
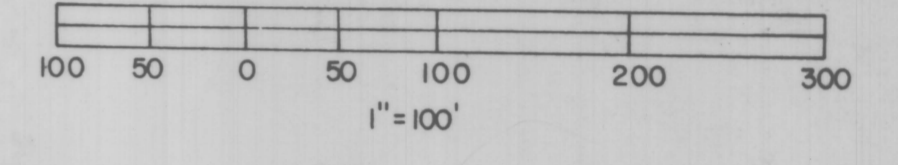
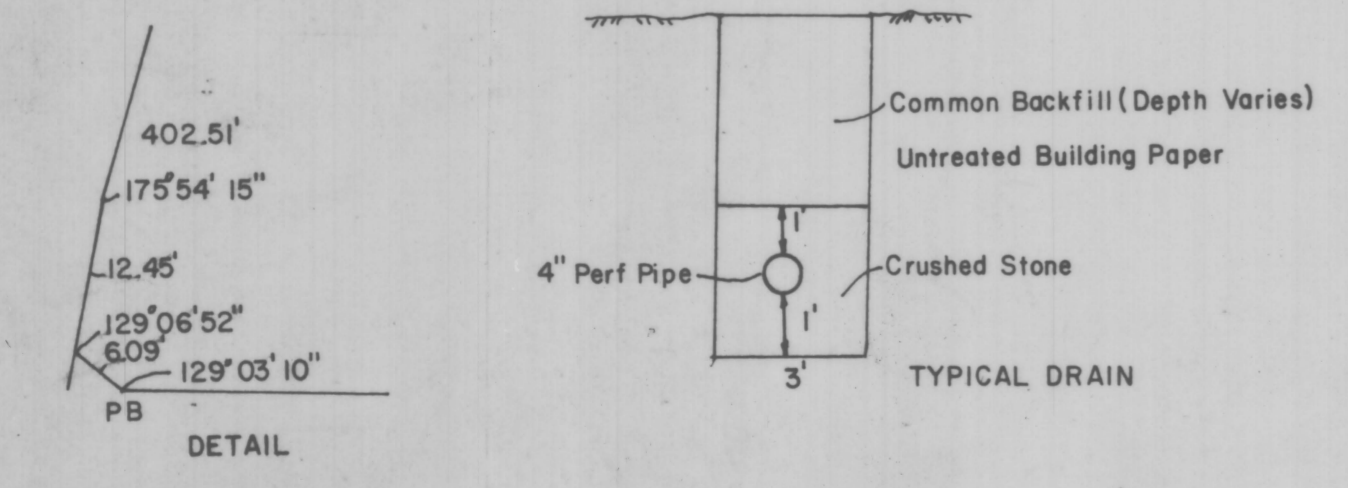


BAY VIEW PARK

Co-Owned by
 Commerce Oil Refining Corp
 &
 The Estate of Florence E.B. Wright
 32.5 Acres, 5 Lots
 Zoned M-1, RR, & R-40
 Designed by Peter L. Ryan, PE
 Preliminary Plat Filed 7/20/77
 Final Plat Filed 9/21/77



- Legend**
- PB Proposed Bound
 - EB Existing Bound
 - CB Catch Basin (R.I. Standard 4.3)
 - Setback
 - Cleanout
 - 4" Underdrain
 - - - Zoning Line



Note - Setback Lines Shown Reflect Zoning Requirements.
 Particular Attention is Called to Lots 2 & 3 Which are in RR & M-1 Zones

John T. Hulan
 Chairman, Planning Commission
 Approved 17 Oct 1977

