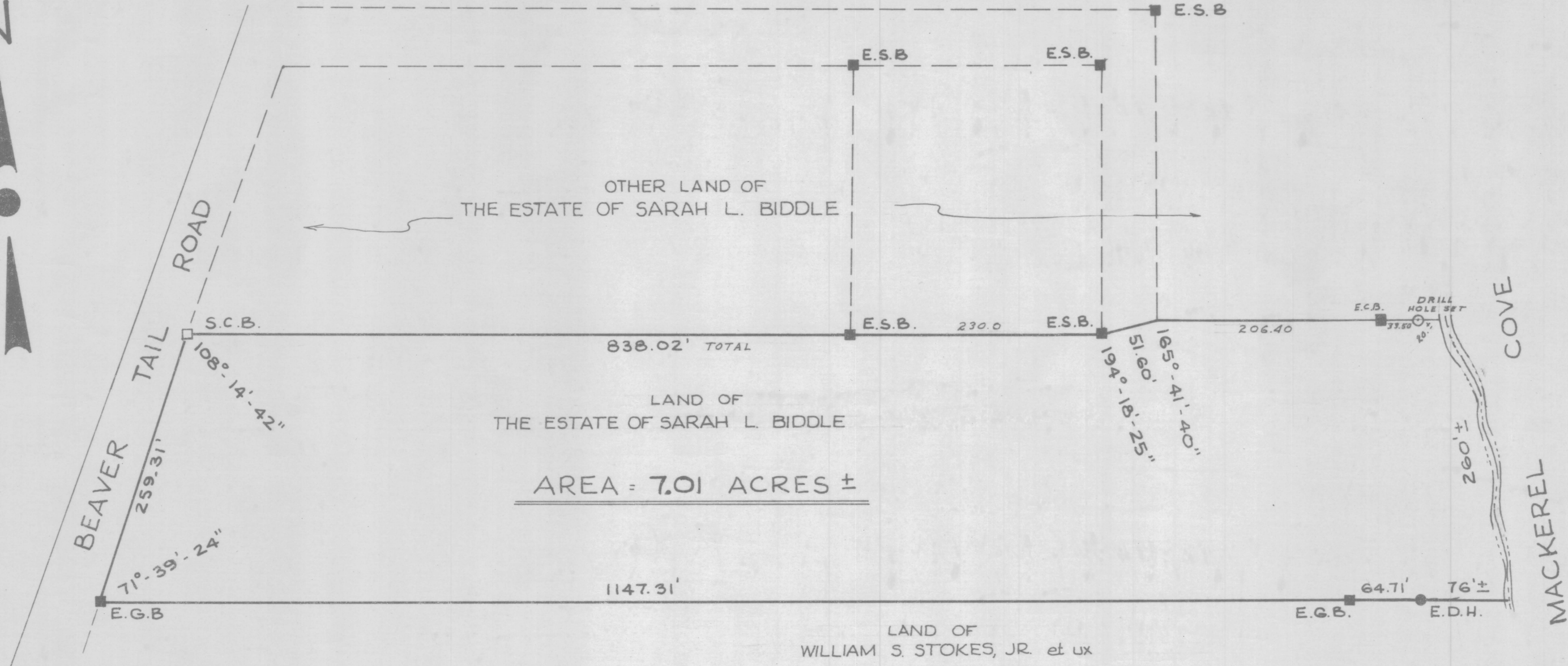


Copy

Recorded: September 18, 1978. at 11:11 A.M.

Raymond A. Tapp
Town Clerk

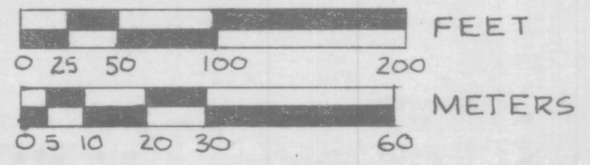


LEGEND

- 259.31' = DISTANCE IN FEET
- E.S.B. = EXIST. STONE BOUND
- E.G.B. = EXIST. GRANITE BOUND
- S.C.B. = CONCRETE BOUND TO BE SET
- E.D.H. = EXIST. DRILL HOLE.

PLAN

SCALE: 1" = 100'



	NICHOLAS BIDDLE JR. PHILADELPHIA, PENNSYLVANIA		JOB NO. VS0510878A
	MAP OF LAND LOCATED IN THE TOWN OF JAMESTOWN NEWPORT COUNTY, STATE OF RHODE ISLAND		SHEET NUMBER 1
VILLAGE GREEN ASSOCIATES, Inc. LAND SURVEYING PLANNING TECH. SERVICES 11 NORTH RD., PEACE DALE, RHODE ISLAND 02883		DRAWN ON: 8/15/78 BY: J.S. CHECKED ON: 8/30/78 BY: HRJ REVISED ON: BY:	OF ONE