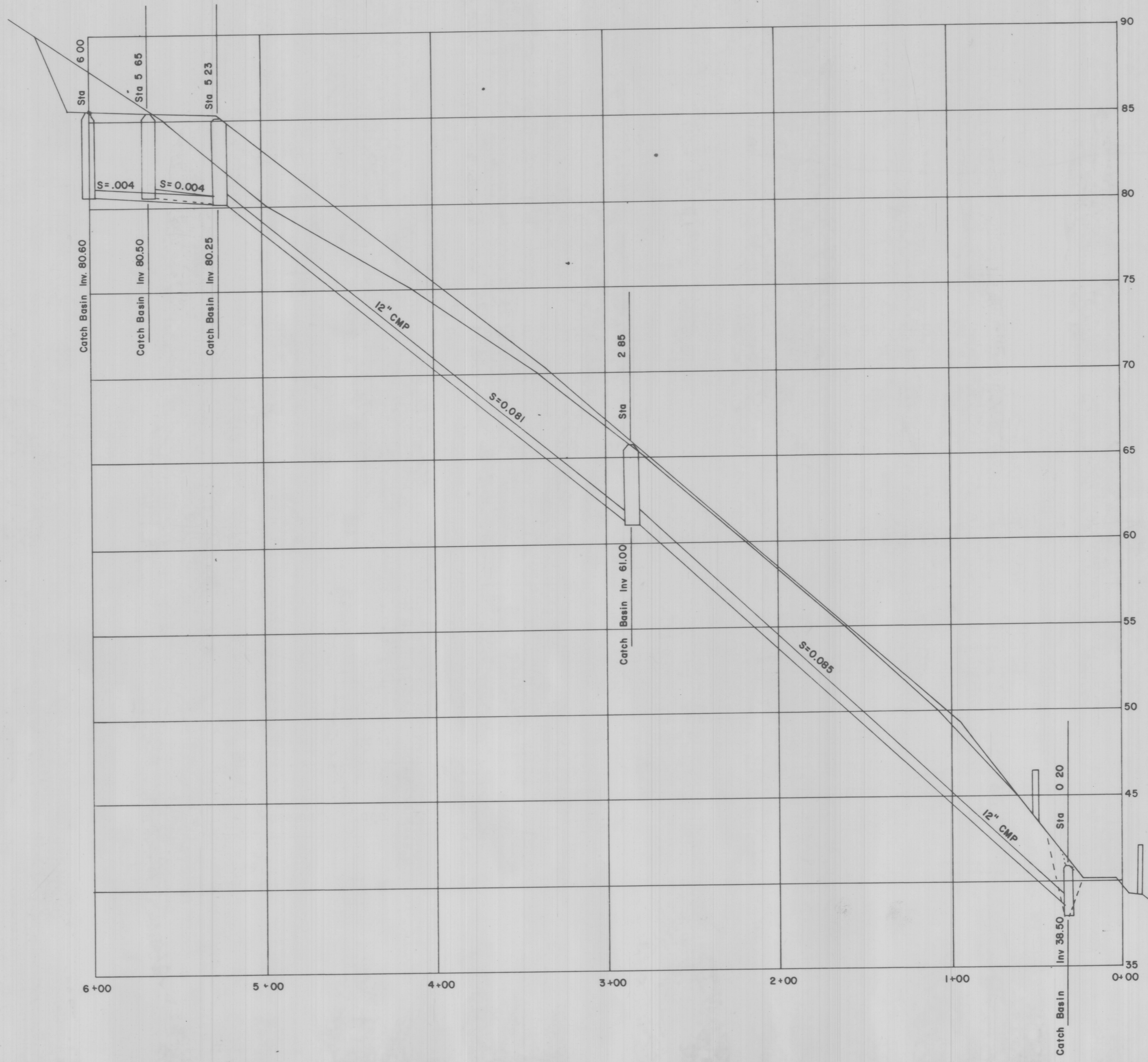
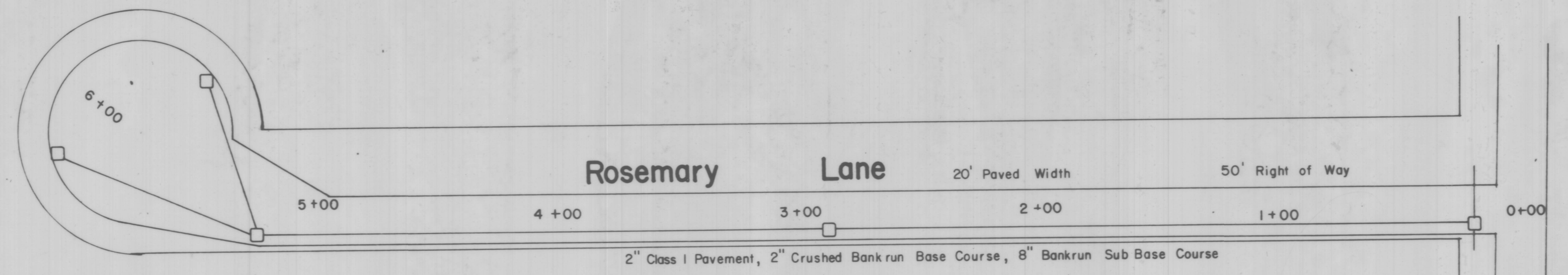
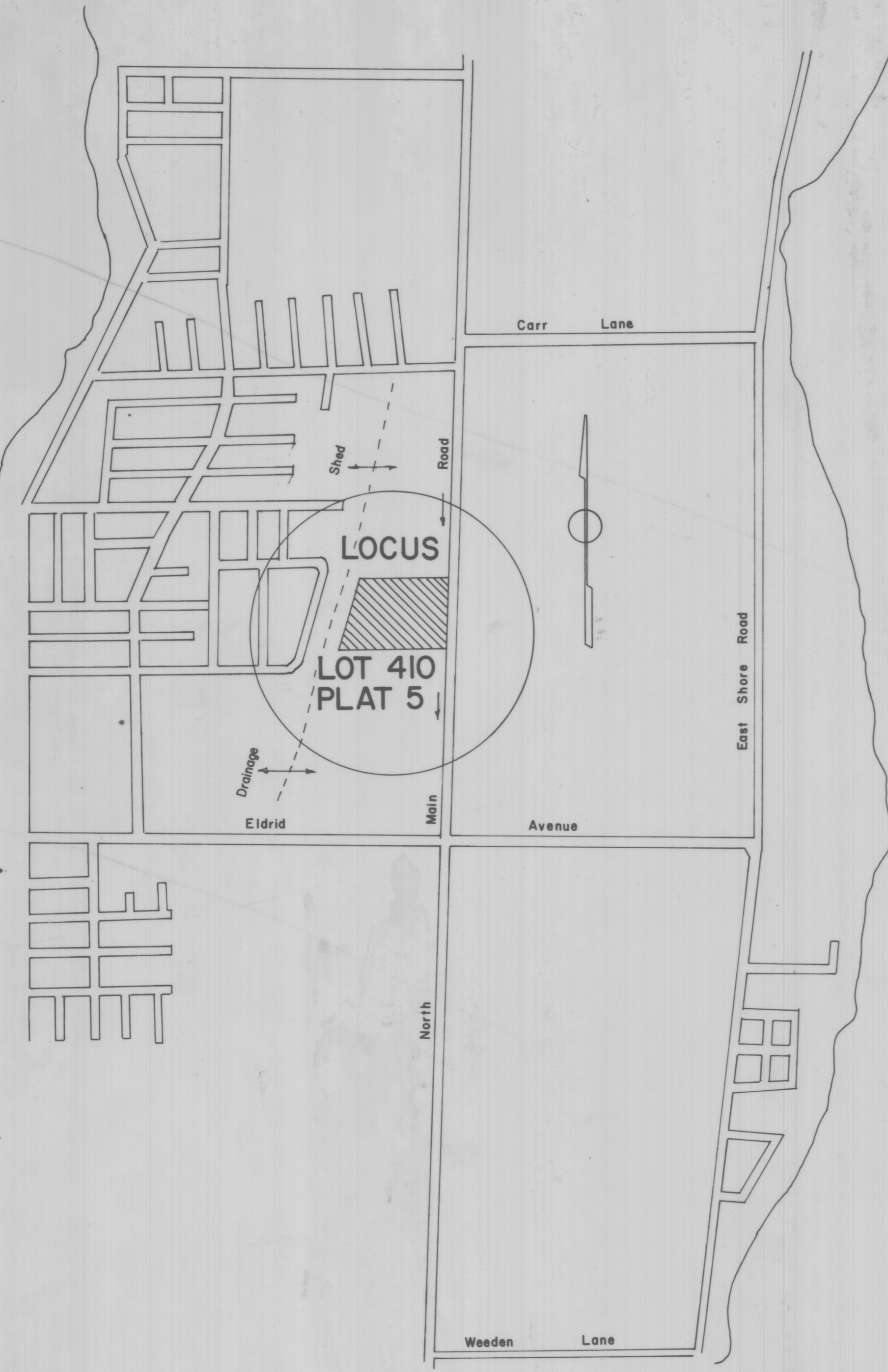


SCENIC VIEW PLAT
JAMESTOWN, R.I.



Plan, Profile, & Locus
December 15, 1976
J. T. Healy, Acting Chairman 30 Sept 77

ISLAND ENGINEERING
Beach Avenue
Jamestown, R.I.

Jamestown Plans Com. June 1, 1977 Trans. sec. Final plat check list