

Lot 410
Lois Smith

Lot 448
Plat 5

Lot 437
Frank Meyer

Lot 473
B.L. Hopkins Construction Co.

Lot 448
Zoned R80
Area = 5.05 Acres

Lot 2
Area = 5.30 Acres

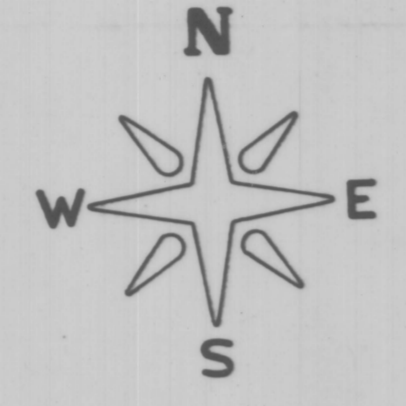
Lot 478
G. Hodges, Jr.

Lot 449
S. Myles Gladding

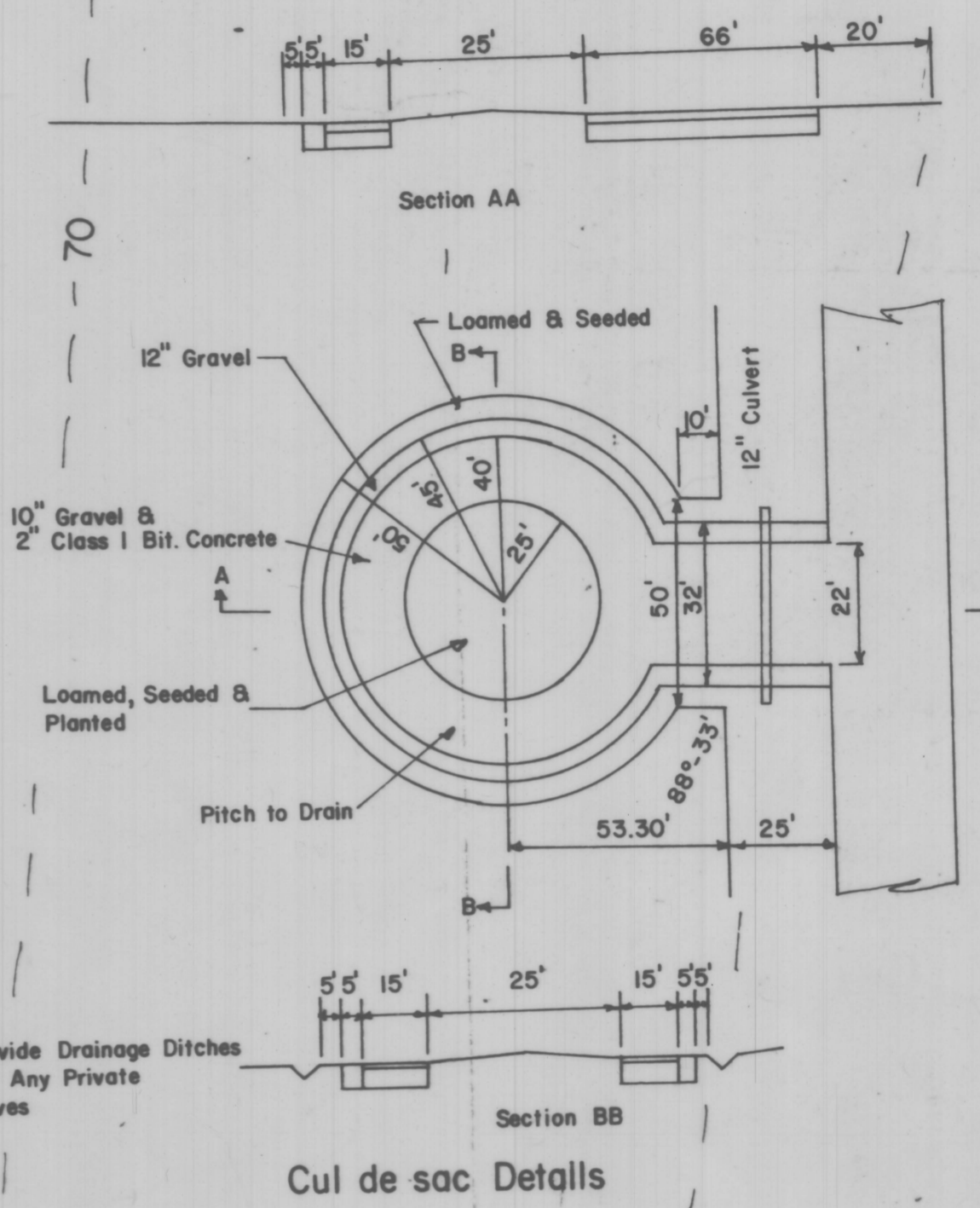
Atlantic Circle
Area = 8127.53 sq. ft.

Lot 485
Lois Armbrust

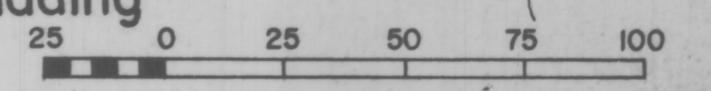
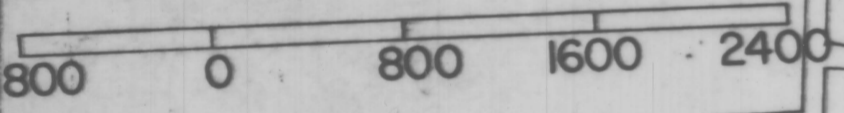
Lot 409
Bruce Hopkins



- Legend**
- Existing Contour
 - CM Bound Indicated by Chisel Mark
 - GB Bound Indicated by Granite Monument



Location Plan
1" = 800'



Approved: *Janeann Pliny, Chairman*
July 13, 1976
Robert R. Braddock, Chairman

PETER L. RYAN
NO. 3372
REGISTERED
PROFESSIONAL ENGINEER

Conanicut Heights Subdivision

SCALE: 1" = 40'	APPROVED BY:	DRAWN BY:
DATE: June 1976		REVIEWED:
R. Mucci & T. Quinn		
Island Engineering		DRAWING NUMBER: 7633

Paved Surface Approximately 20' Wide
Highway Line
Stone Wall
North Main Road