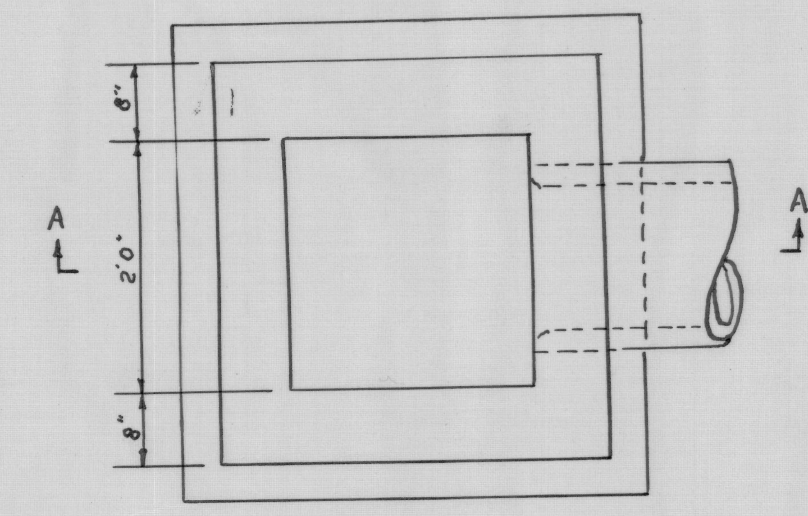


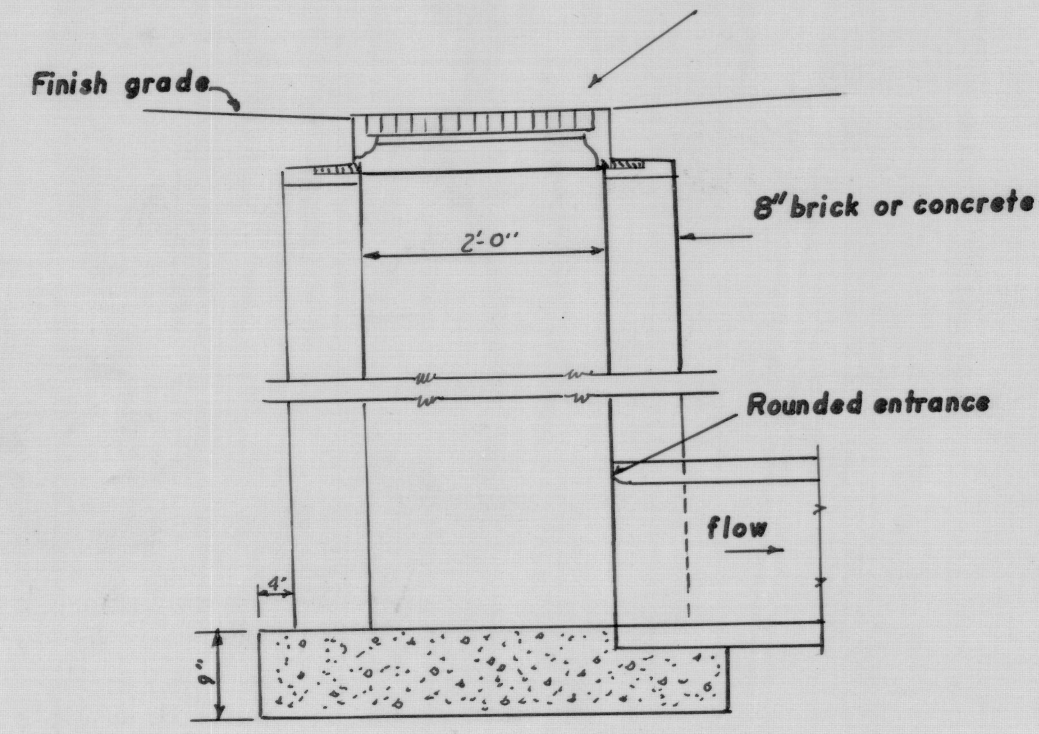
HORIZONTAL 1" = 40'  
 VERTICAL 1" = 4'

CENTER LINE OF COLLINS TERRACE

NOTE: ALL ROAD AND DRAINAGE WORK WILL CONFORM TO TOWN OF JAMESTOWN SPECIFICATIONS



PLAN Frame & grate R.I. Standard 38



SECTION A-A  
 STANDARD CATCH BASIN

SUBDIVISION OF LAND OF GRAY, INC.  
 FEBRUARY 1968  
 ROAD PROFILE - COLLINS TERRACE

