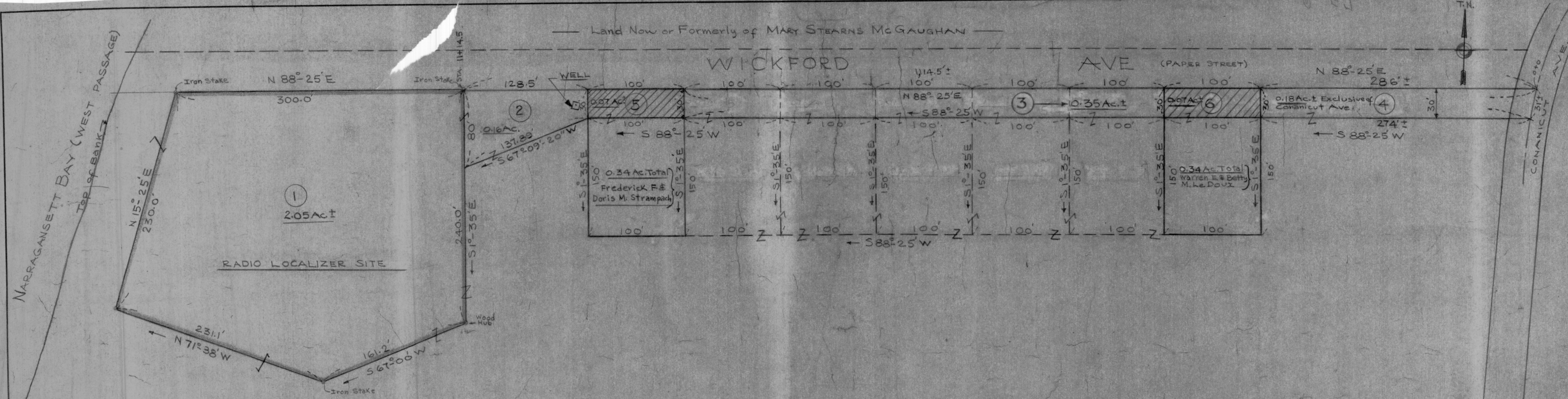
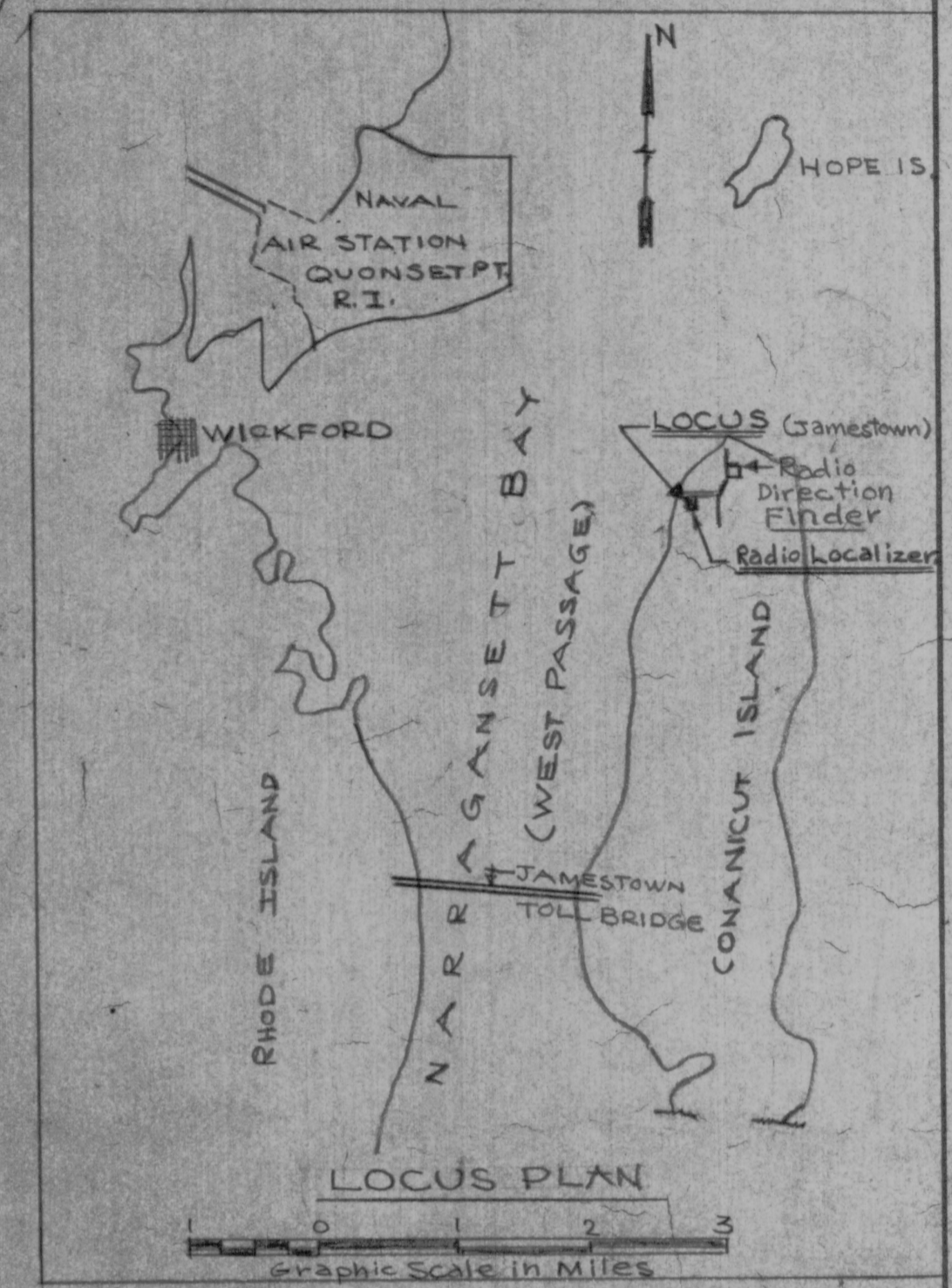


Land Now or Formerly of MARY STEARNS MCGAUGHAN

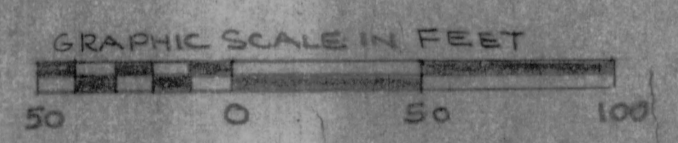


LAND OF Gerard J. & Laura C. Albert = 17.8A ± TOTAL



NOTES

1. Data Compiled from NAS Quonset Pt. R.I. PWD Dwg. No. 3520. dated Feb. 21, 1946 and from various deed descriptions.
2. Bearings are related to True North Meridian.



PLAN OF LAND IN JAMESTOWN, RHODE ISLAND. (RADIO LOCALIZER)

NOREAST DIV NAVFAC DWG. NO. RE-429  
 DRAWN BY: M.A.D. DATE: 13 NOVEMBER 1967  
 SCALE: 1" = 50' Revised: 25 SEPT. 1968

Filed June 4, 1969 at 1:25 PM