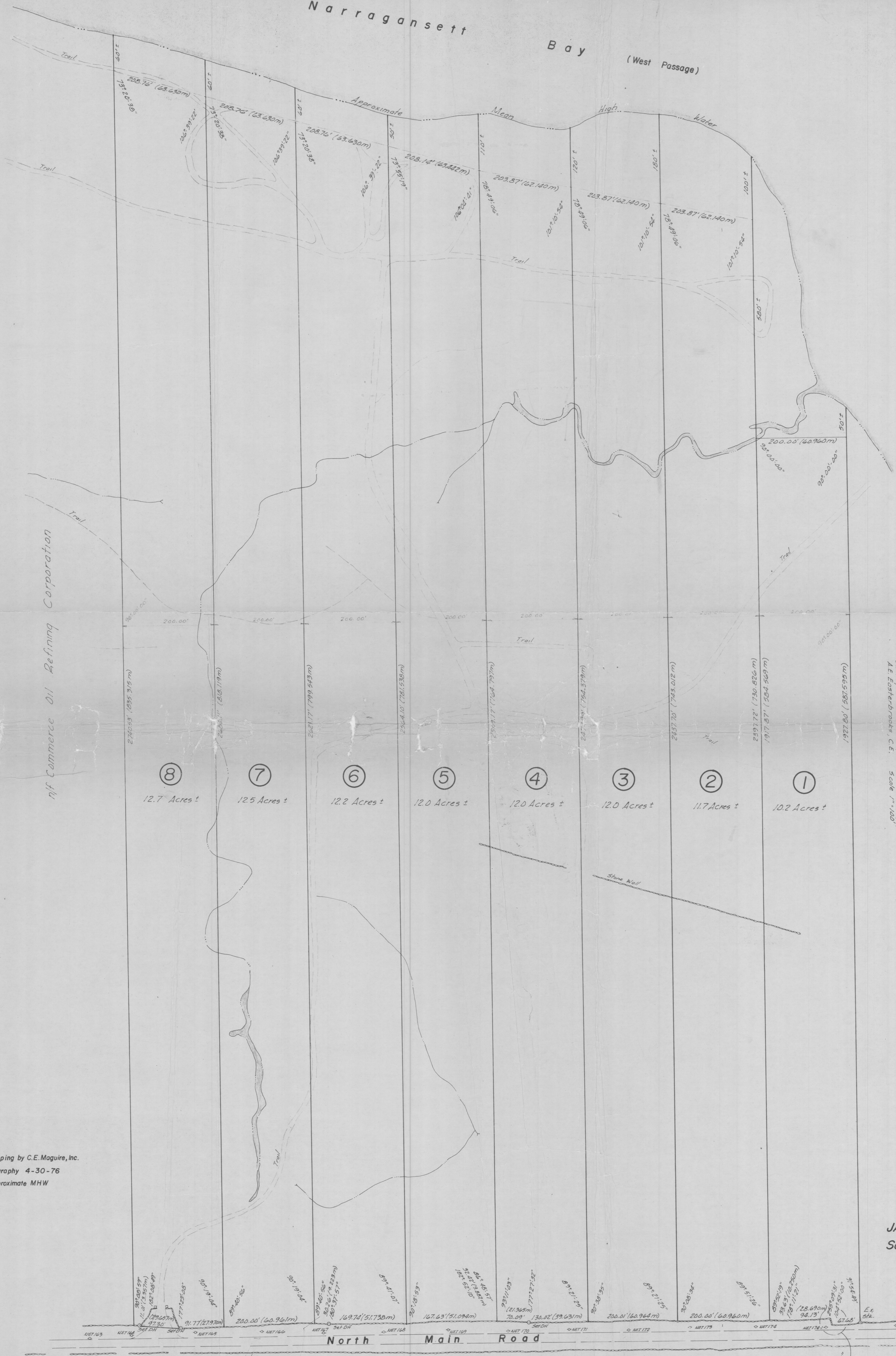
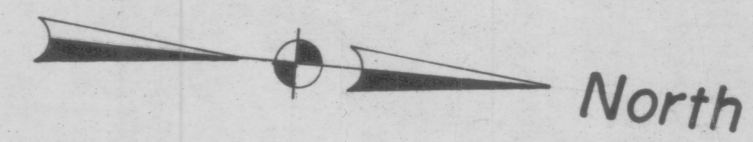


Narragansett Bay (West Passage)

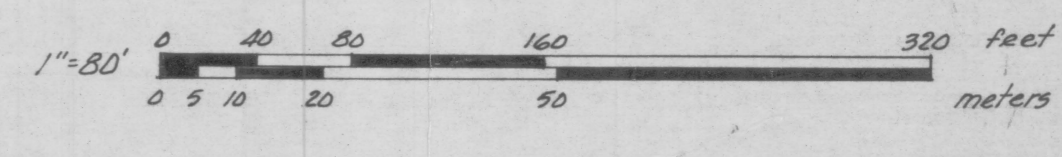


Mif Commerce Oil Refining Corporation

Mif Philip J & Norma Willis
 Refer plan Two Tracts of Land in the Town of Jamestown, R.I.
 Surveyed by William D. Phillips, Map No. 1976
 A.E. Foster & Co., C.E. Scale 1"=100'

Photogrammetric mapping by C.E. Maguire, Inc.
 Date of photography 4-30-76
 Lot areas approximate MHW

PLAN OF LOTS
FOR
DAVID F. LAROCHE
JAMESTOWN, RHODE ISLAND
Scale: 1"=80'
July, 1980
Bristol Associates



John J. Bristol

Detail - not to scale