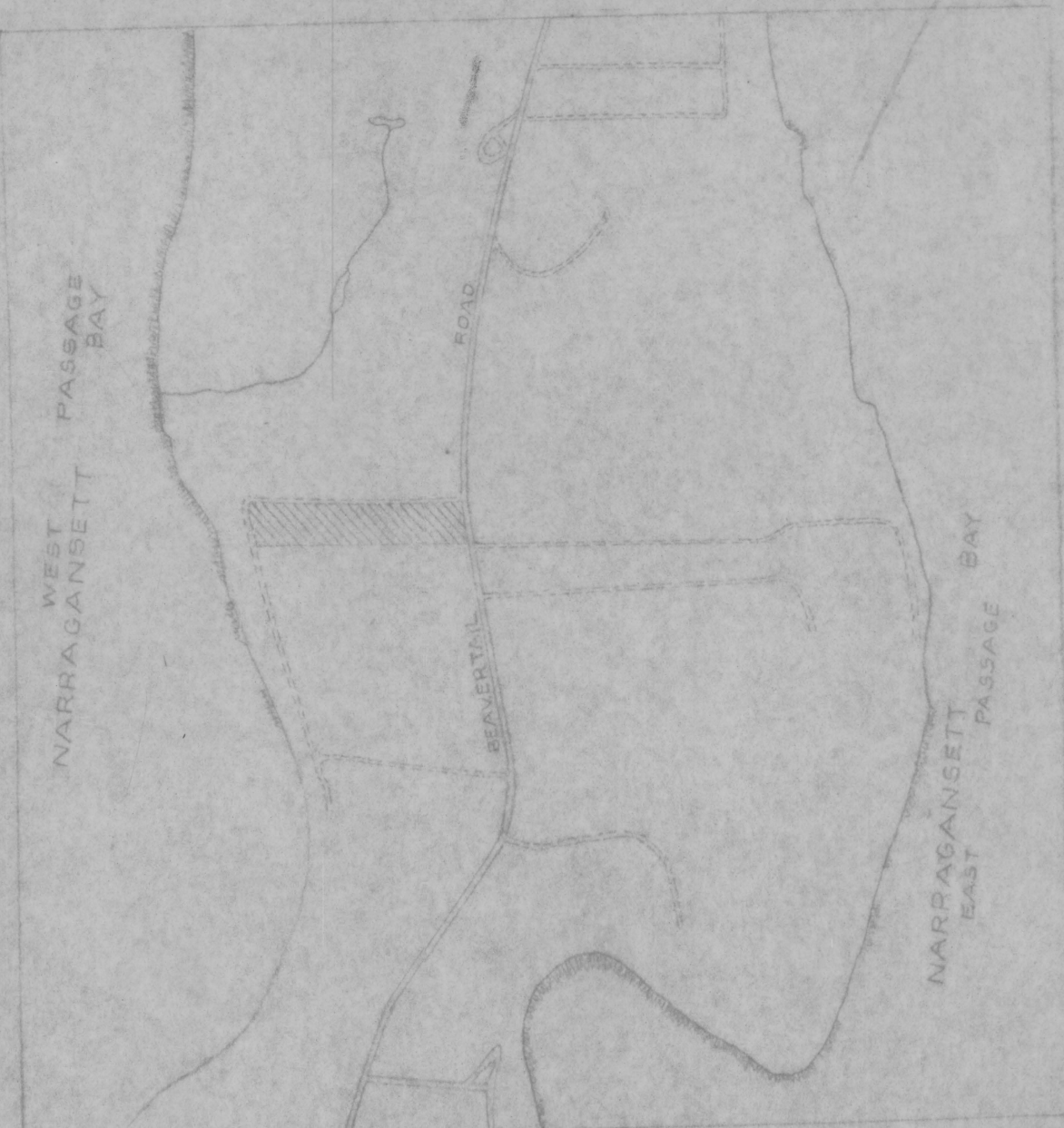


HPF 301B



VICINITY MAP
SCALE: 1" = 1000'

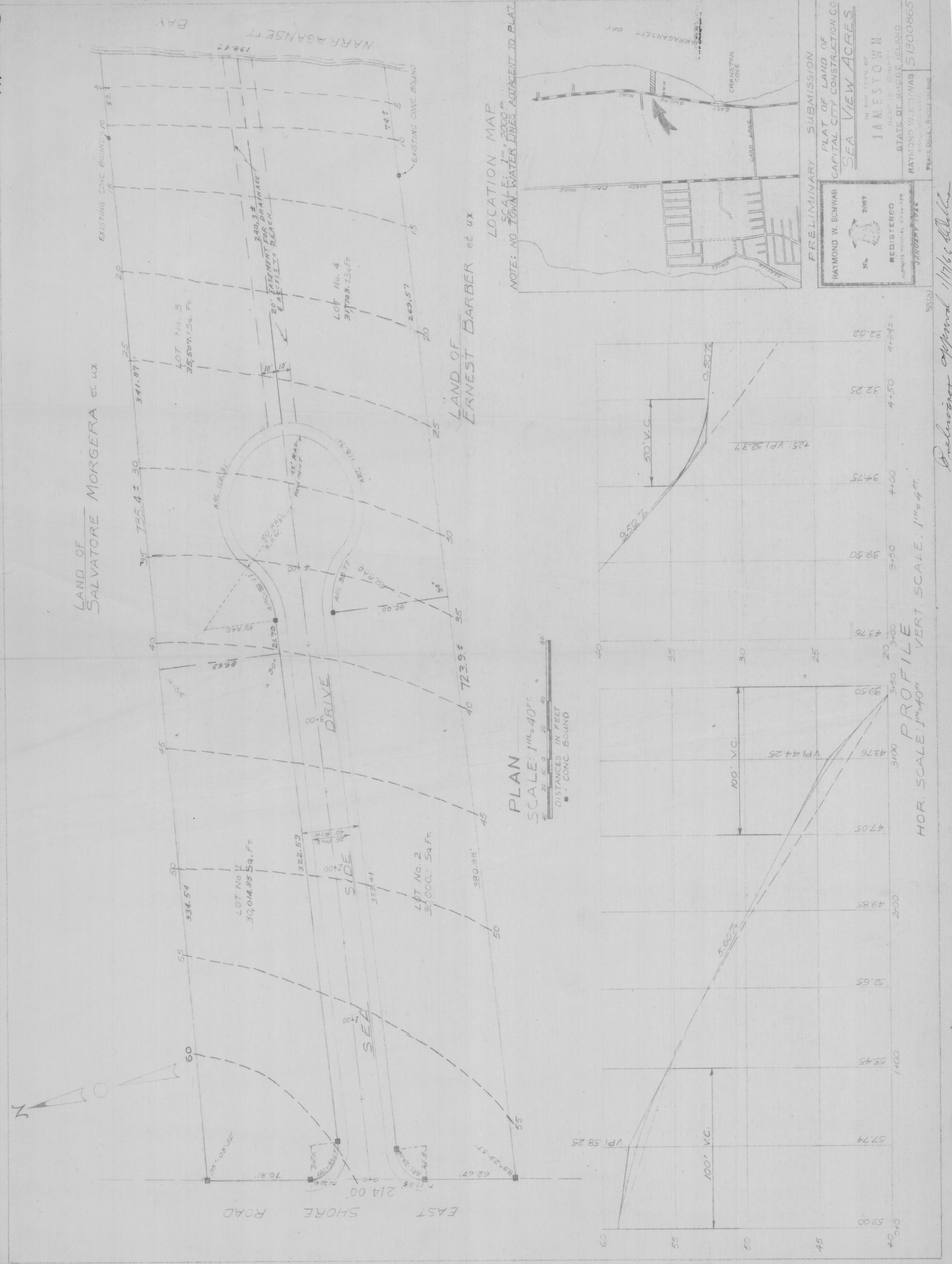
PRELIMINARY SUBMISSION
PLAT OF LAND OF
MICHAEL A. FITZPATRICK
LOCATED
IN THE TOWN OF
JAMESTOWN
NEWPORT COUNTY
STATE OF RHODE ISLAND

RAYMOND W. SCHWAB
REGISTERED
PROFESSIONAL SURVEYOR
No. 2007
EXPIRES 12/31/2014

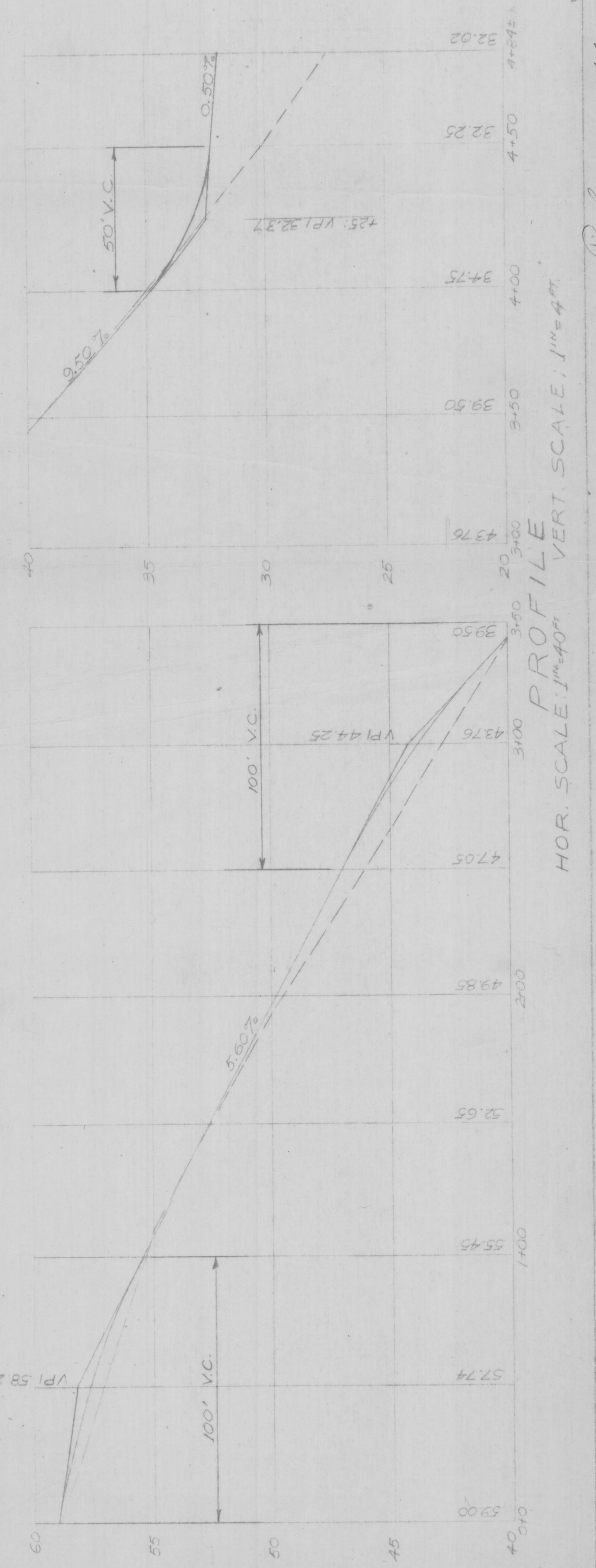
RAYMOND W. SCHWAB
REGISTERED
PROFESSIONAL SURVEYOR
No. 2007
EXPIRES 12/31/2014

PLAT NO. 5170414
SHEET
2 OF 2

HPF 301B



PLAN
SCALE: 1" = 40'
DISTANCES IN FEET
CONC. BOUND



PRELIMINARY SUBMISSION
PLAT OF LAND OF
CAPITAL CITY CONSTRUCTION CO.
SEA VIEW ACRES
IN THE TOWN OF
JAMESTOWN
STATE OF RHODE ISLAND
RAYMOND W. SCHWAB
REGISTERED
PROFESSIONAL SURVEYOR
No. 2007
EXPIRES 12/31/2014

Preliminary approved 11/16/14