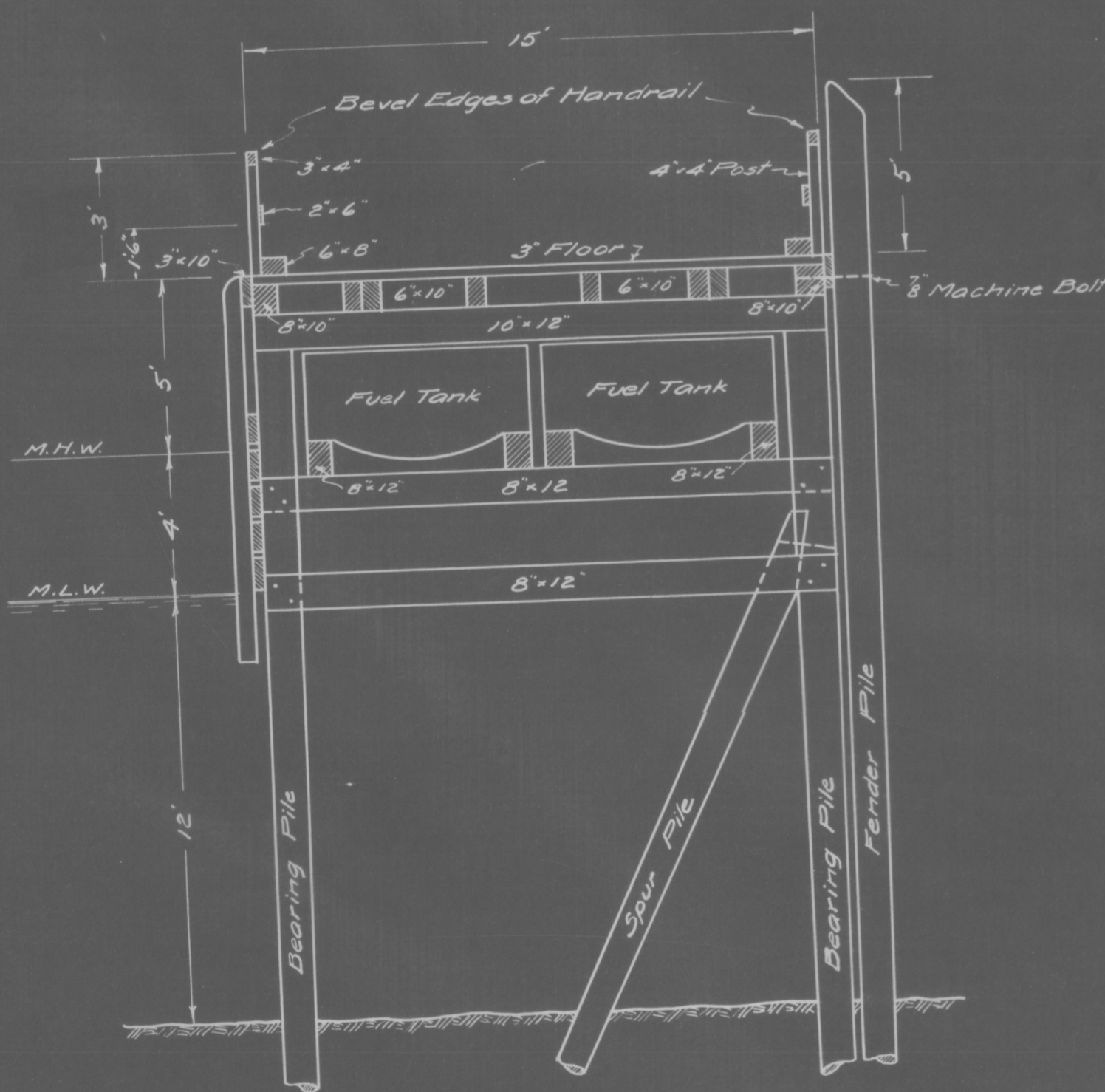
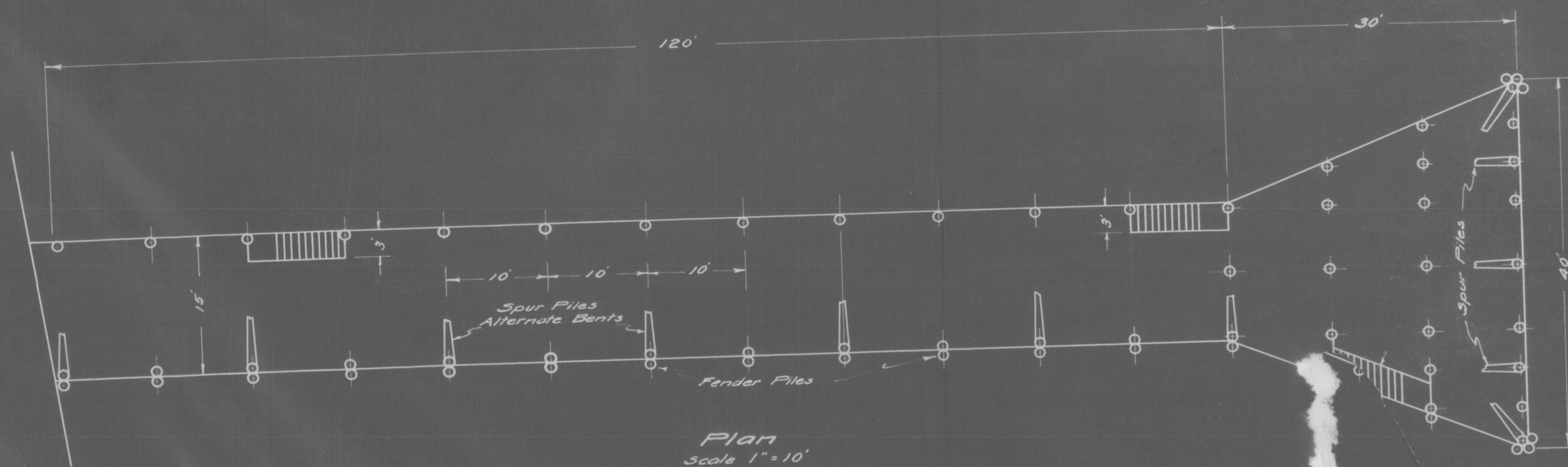
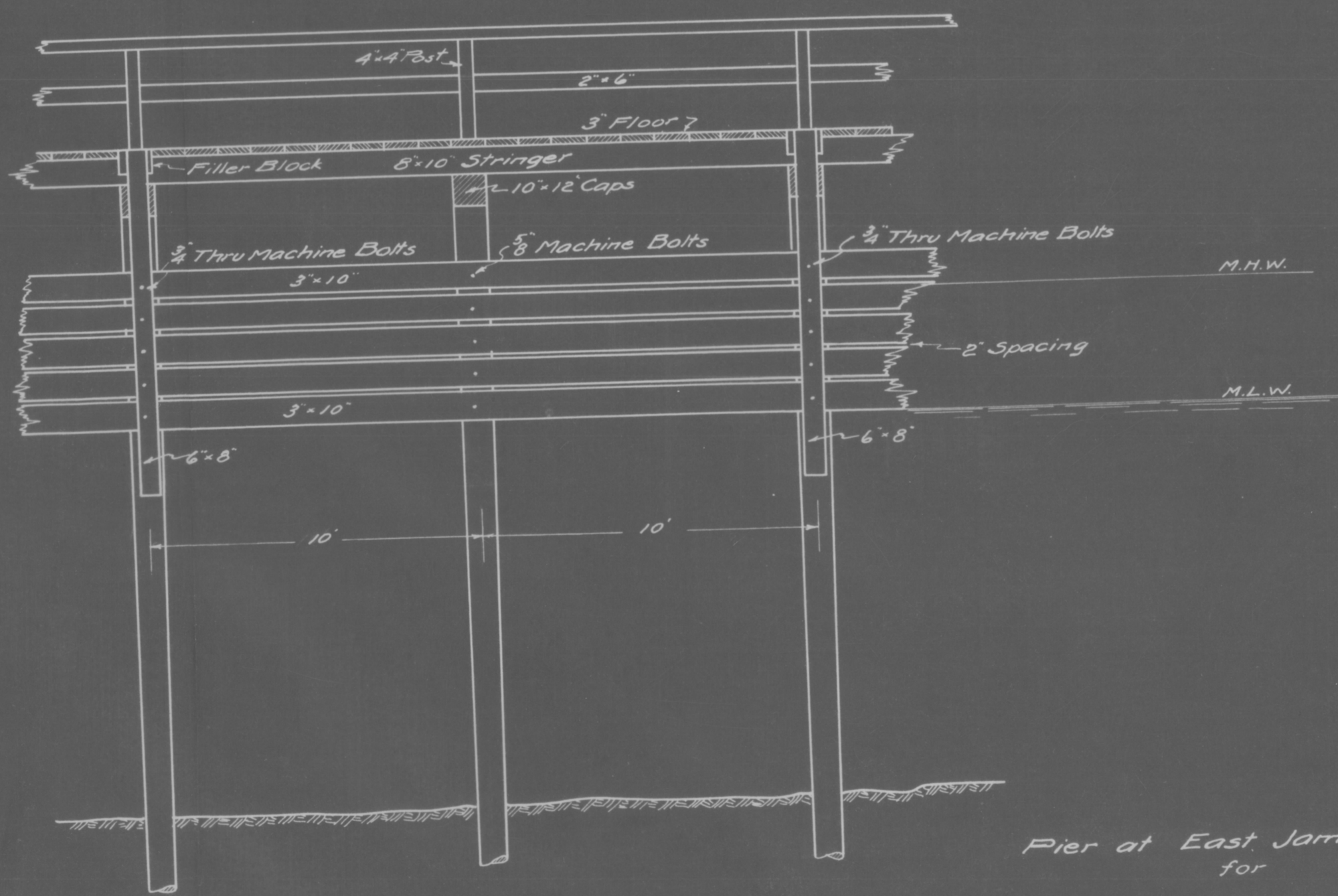


HPF289A



General Note
Washers to be used with all bolts
Heads of Bolts to be Countersunk in all Cases



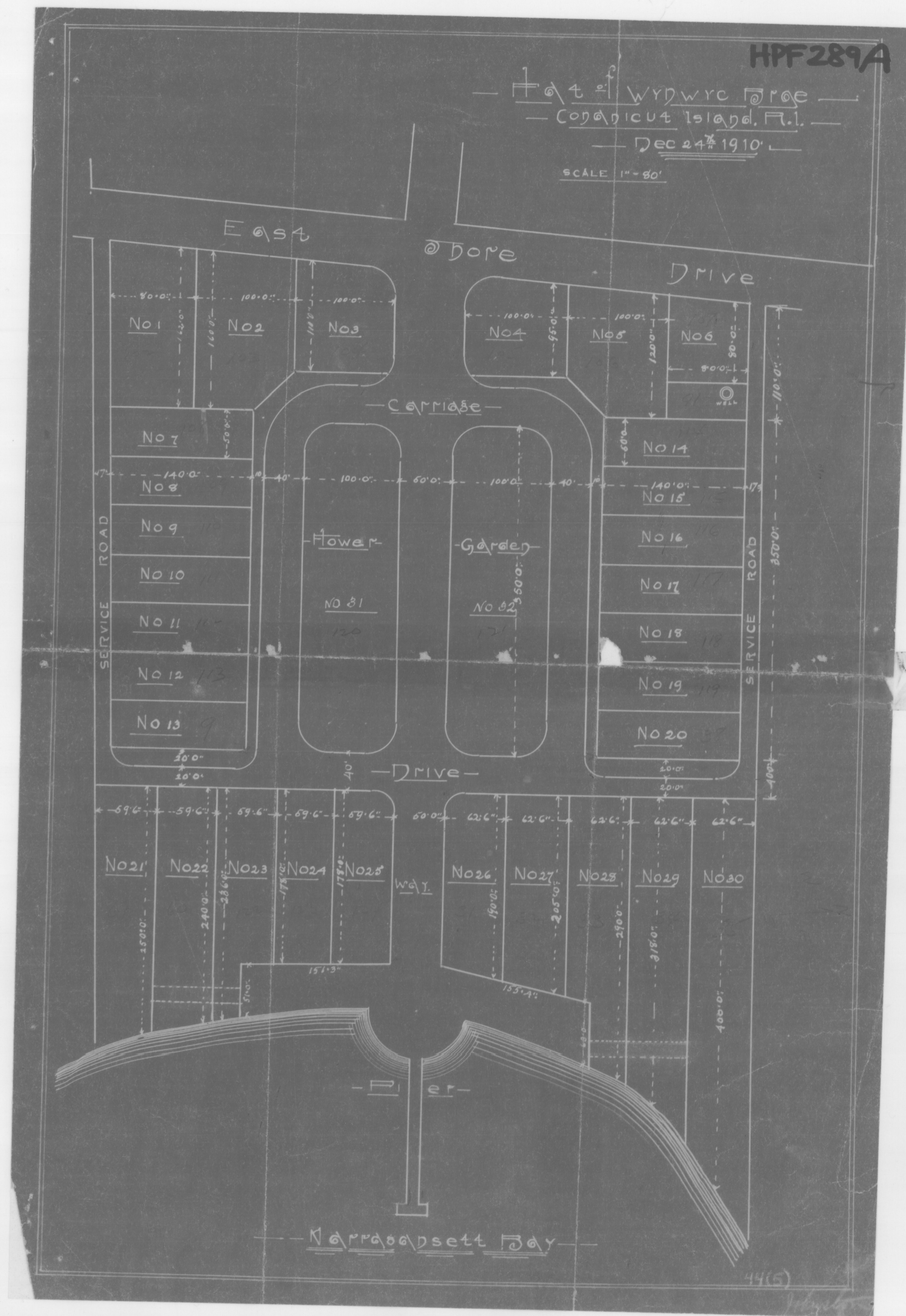
Approved: Jamestown & Newport Ferry Co.
Gen. Mgr.

Pier at East Jamestown
for
JAMESTOWN & NEWPORT FERRY CO.
Designed & Supervised
by
Charles H. Brooks General Manager
December 20, 1939

45(A)

HPF289A

Plan of W.P.N.W.R.C. Pier
Cape Cod, Massachusetts
Dec 24th 1910
SCALE 1" = 80'



Narragansett Bay