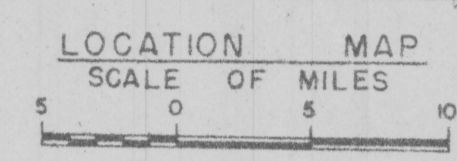
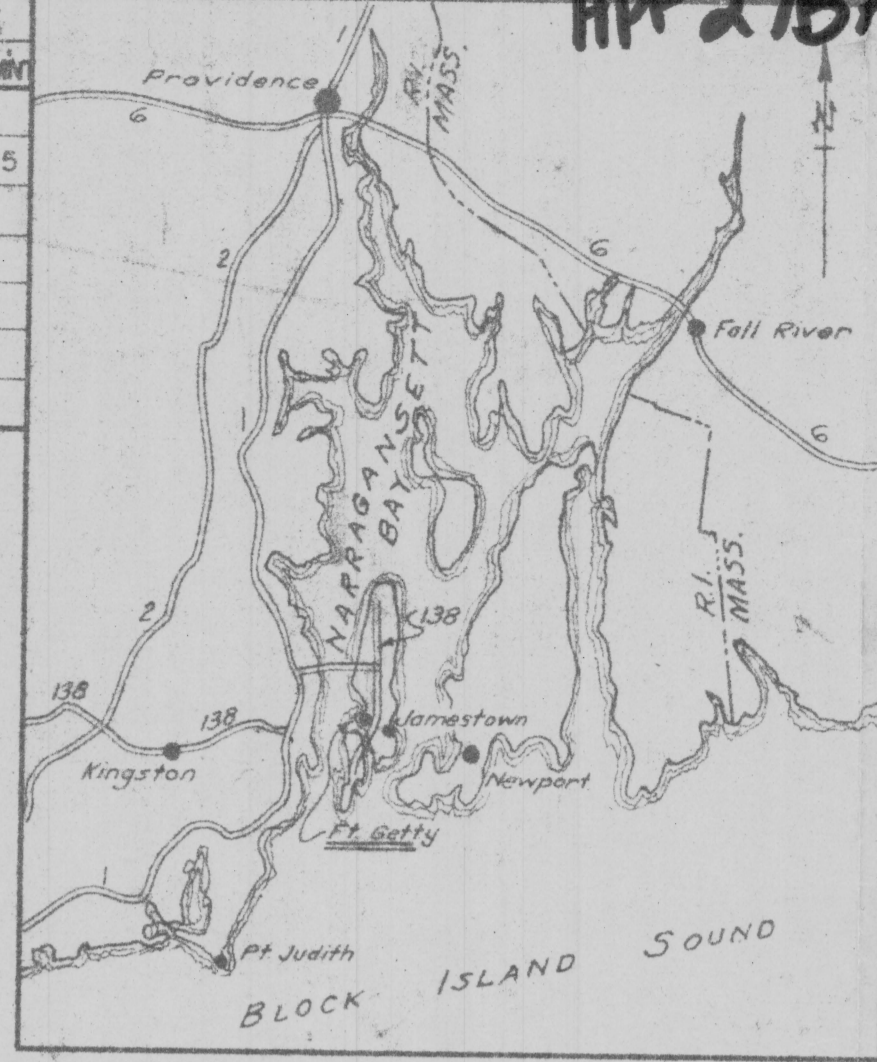


HP 275A.B

TRACT NO.	OWNER	ACREAGE	
		FEE	EASEMENT
	ACQUISITION (Prior to 1940)	31.67	
	EASEMENT (Prior to 1940)		1.35
1	EST. OF BENJAMIN S. COTTRELL	0.458	
1A	do.	0.235	
2	ESTATE OF THOMAS H. CLARKE	5.638	
2A	do.	2.836	



FINAL PROJECT MAP
(TYPE OF MAP)

STATE RHODE ISLAND
COUNTY NEWPORT
DIVISION NEW ENGLAND
DISTRICT PROVIDENCE
SERVICE COMMAND FIRST
USING AGENCY H.D. OF NARRAGANSETT BAY

1 MILES WEST OF JAMESTOWN

TRANSPORTATION FACILITIES

N.Y., NH. & HARTFORD RAILROAD
ROUTE 138 STATE ROAD
ROUTE 1 FEDERAL ROAD
AIRLINE

LAND AREA

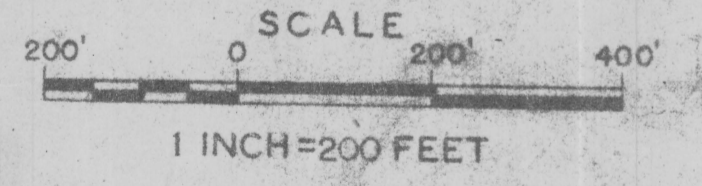
TOTAL ACREAGE IN PROJECT 42.188
ACRES OWNED BY W.D. PRIOR TO 1940 31.670
ACRES OWNED BY W.D. AFTER 1940 9.168
ACRES UNDER EASEMENT TO W.D. PRIOR TO 1940 1.350
ACRES TRANSFERRED TO W.D. _____
ACRES DONATED TO W.D. _____

DISPOSALS

TOTAL ACRES DISPOSED OF 42.188
ACRES TRANSFERRED _____
ACRES TO WAA
FEE 40.838
EASEMENT 1.350

LEGEND

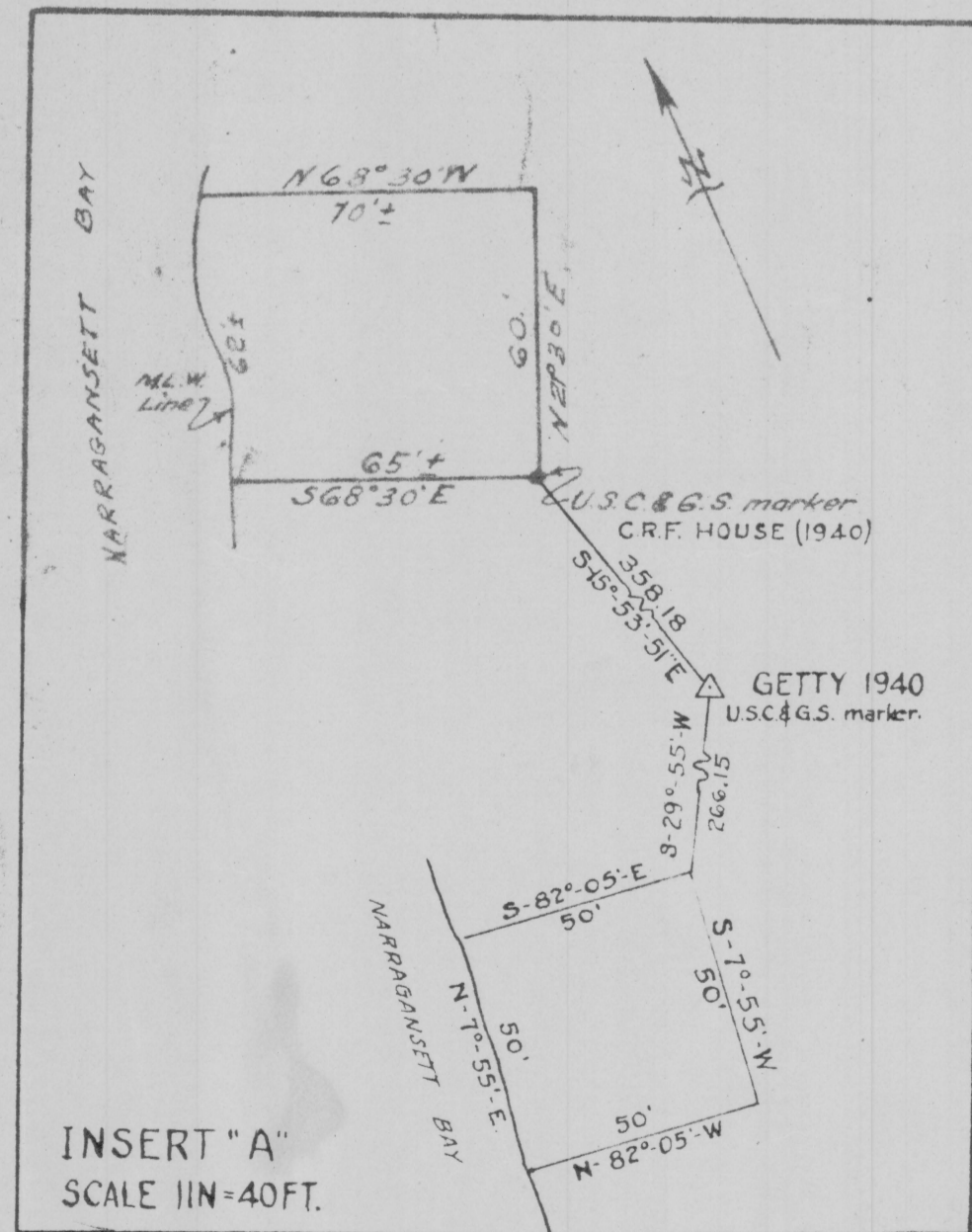
AVIGATION EASEMENT _____
RESERVATION LINE _____
STATE OR PROVINCE LINE _____
COUNTY LINE _____
CIVIL DISTRICT PREGINCT _____
LAND GRANT LINE _____
CITY, VILLAGE OR BOROUGH _____
CEMETERY, SMALL PARK, ETC. _____
TOWNSHIP LINE _____
SECTION LINE _____



WAR DEPARTMENT O.C.E.
CONSTRUCTION DIVISION
REAL ESTATE
FORT GETTY
JAMESTOWN, RHODE ISLAND
MILITARY RESERVATION

RECOMMENDED: *[Signature]* DATE SEPT, 1945
APPROVED: *[Signature]* DATE SEPT, 1945

DATE BY	REVISIONS	APPROVED
4/14/47 JAS.	Due to final audit	R.F.F.
4/14/47 JAS.	Revised tables	F.E.T.
4/14/47 JAS.	Final map accepted	F.E.T.



Accountability assumed by War Assets Administration on 42,188 acres, 26 Nov. 1945 (Subject to permanent easement reserved by Department of the Army on 0.03 acre)

ACQUISITION AUTHORIZATION

RE-D (UN-NUMBERED) DATED 11-28-40
RE-D 1321 DATED 7-27-42

0215