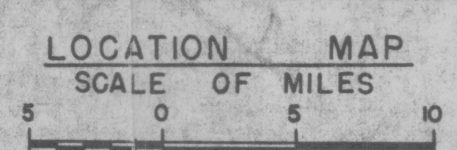
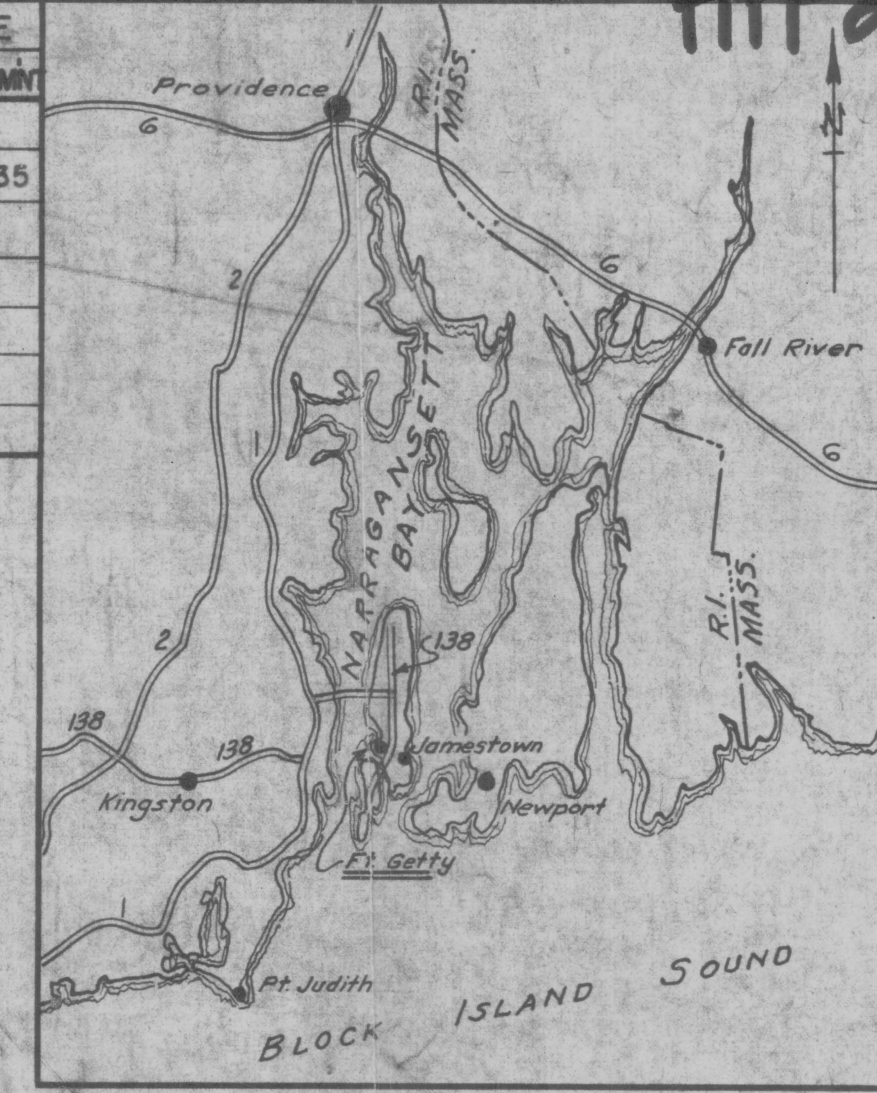


HPF 274B

TRACT NO.	OWNER	ACREAGE	
		FEE	EASEMENT
	ACQUISITION (Prior to 1940)	31.67	
	EASEMENT (Prior to 1940)		1.35
1	EST. OF BENJAMIN S. COTTRELL	0.459	
1A	do.	0.235	
2	ESTATE OF THOMAS H. CLARKE	5.638	
2A	do.	2.836	



FINAL PROJECT MAP
(TYPE OF MAP)
STATE RHODE ISLAND
COUNTY NEWPORT
DIVISION NEW ENGLAND
DISTRICT PROVIDENCE
SERVICE COMMAND FIRST
USING AGENCY H.D. OF NARRAGANSETT BAY
1 1/2 MILES WEST OF JAMESTOWN

TRANSPORTATION FACILITIES
N.Y., N.H. & HARTFORD RAILROAD
ROUTE 138 STATE ROAD
ROUTE 1 FEDERAL ROAD
AIRLINE

LAND AREA

* TOTAL ACREAGE IN PROJECT 42.188
ACRES OWNED BY W.D. PRIOR TO 1940 31.670
ACRES OWNED BY W.D. AFTER 1940 9.168
ACRES UNDER EASEMENT TO W.D. PRIOR TO 1940 1.350
ACRES TRANSFERRED TO W.D.

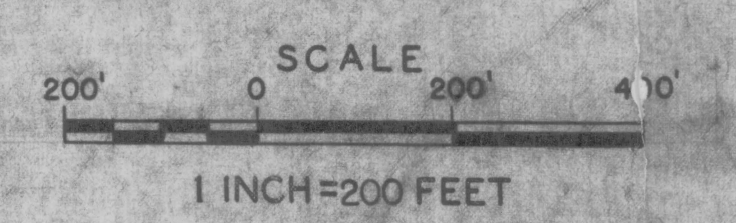
* 0.09 acre easement reserved over fee area transferred to W.A.A. for the Navy.
* 0.055 acre easement withdrawn (2-18-54) over fee area transferred to W.A.A. for the Dept. of the Navy.

DISPOSALS

TOTAL ACRES DISPOSED OF 42.188
ACRES TRANSFERRED
ACRES TO WAA
FEE 40.838
EASEMENT 1.350
* Transferred to the Dept. of the Navy (Basic) 0.145

LEGEND

- AVIGATION EASEMENT
- RESERVATION LINE
- STATE OR PROVINCE LINE
- COUNTY LINE
- CIVIL DISTRICT PRECINCT
- LAND GRANT LINE
- CITY, VILLAGE OR BOROUGH
- CEMETERY, SMALL PARK, ETC.
- TOWNSHIP LINE
- SECTION LINE

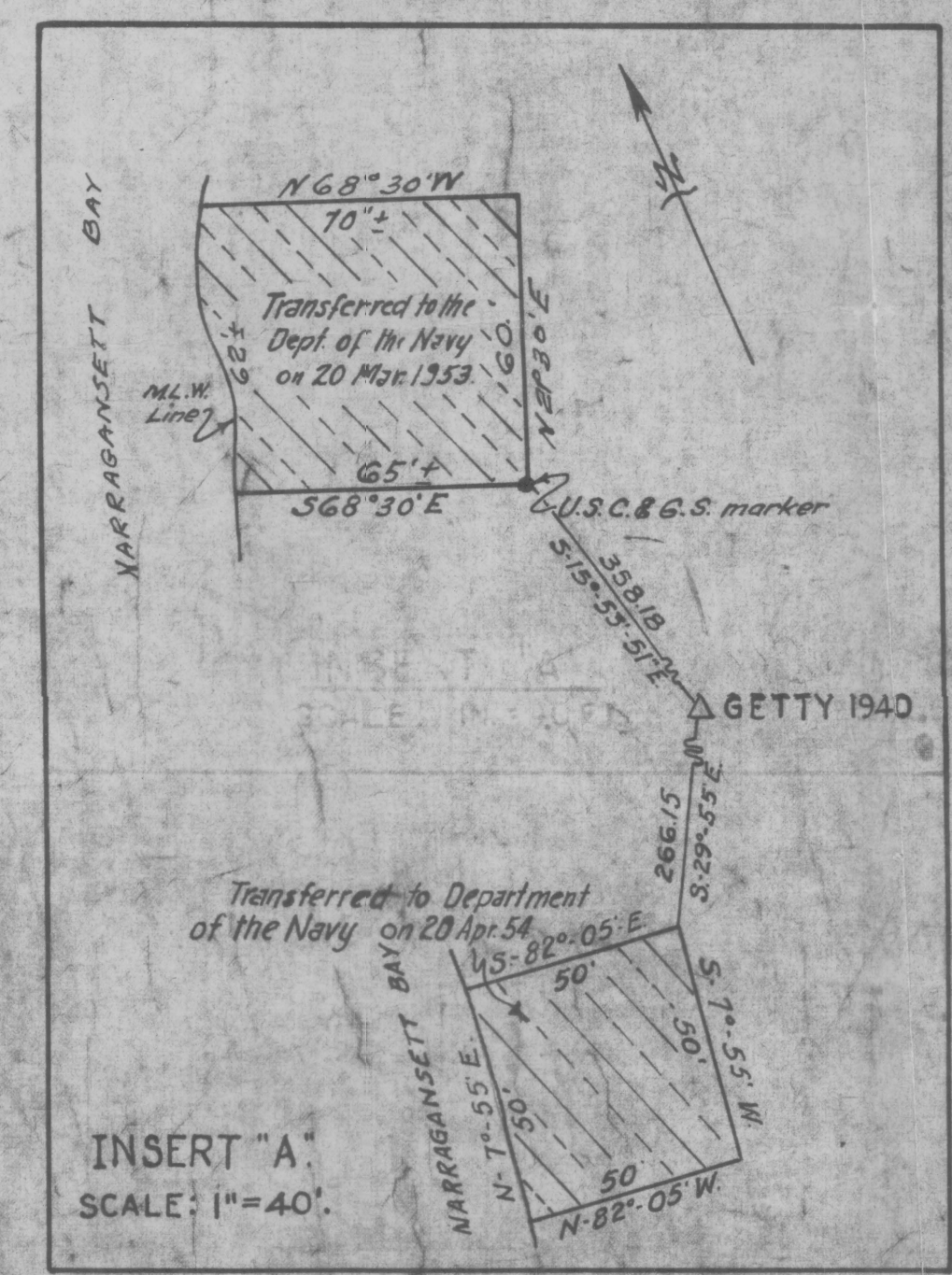
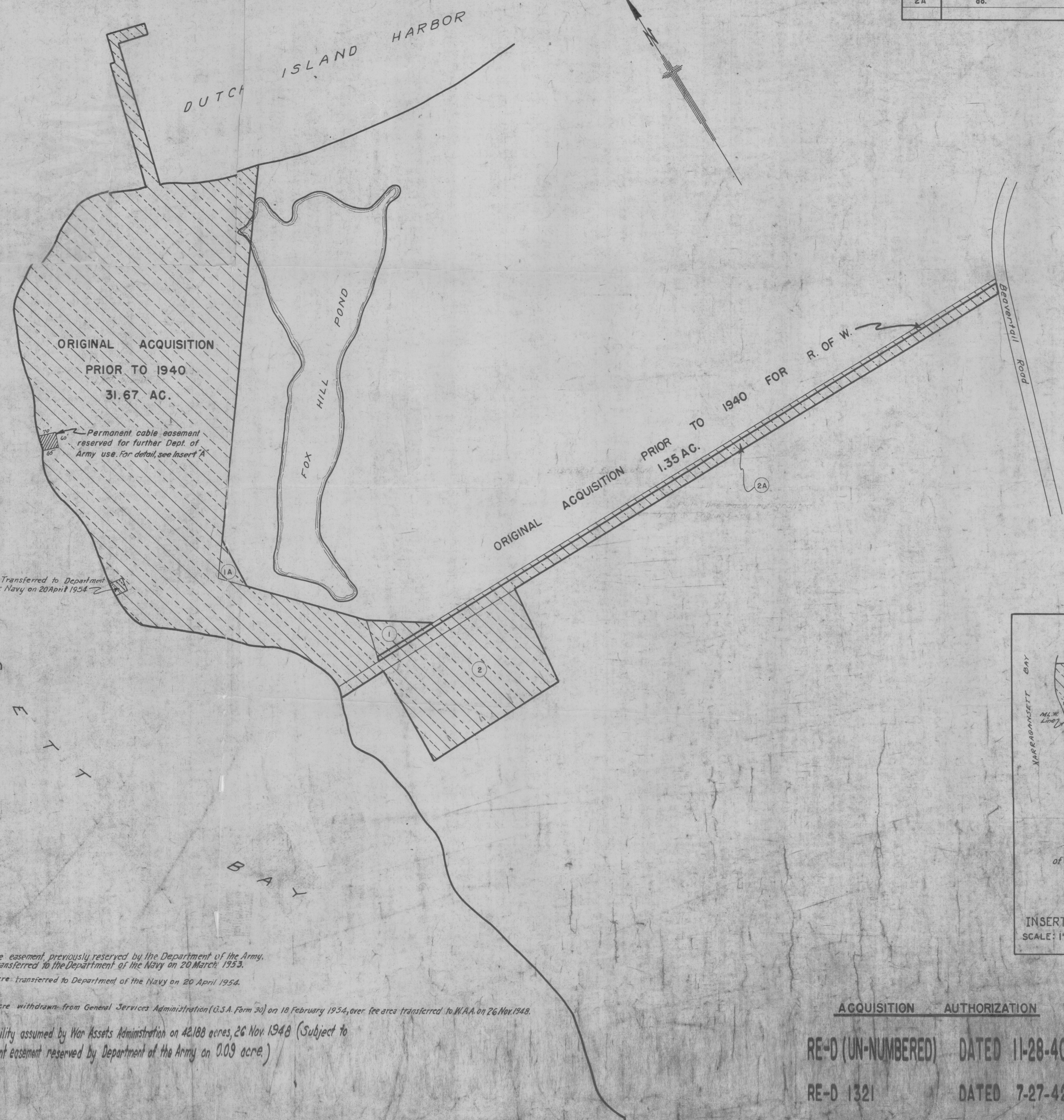


WAR DEPARTMENT O.C.E.
CONSTRUCTION DIVISION
REAL ESTATE
FORT GETTY
JAMESTOWN, RHODE ISLAND
MILITARY RESERVATION

RECOMMENDED: *[Signature]* DATE SEPT. 1945
APPROVED: *[Signature]* DATE SEPT. 1945
BRIG. GEN., U.S.A.

COMPILED: F.J.T. TRACED: F.J.T. CHECKED: G.H.S.

DATE BY	REVISIONS	APPROVED
4/14/47 JES	Due to final audit	R.F.F.
4/14/47 JES	Revised tables	F.E.T.
7-27-42 G.H.T.	W.A.A. acceptance	R.E.
7-27-54 G.H.T.	G.S.A. & transferred note added	JES



- 0.09 acre easement previously reserved by the Department of the Army, transferred to the Department of the Navy on 20 March 1953.
- 0.055 acre transferred to Department of the Navy on 20 April 1954.
- 0.055 acre withdrawn from General Services Administration (G.S.A. Form 30) on 18 February 1954, over fee area transferred to W.A.A. on 26 Nov. 1948.
- Accountability assumed by War Assets Administration on 42.188 acres, 26 Nov. 1948 (Subject to permanent easement reserved by Department of the Army on 0.09 acre.)

ACQUISITION AUTHORIZATION
RE-D (UN-NUMBERED) DATED 11-28-40
RE-D 1321 DATED 7-27-42

0215
AUDITED