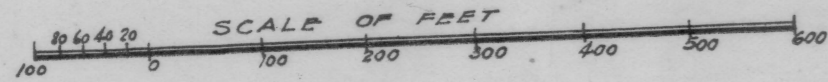


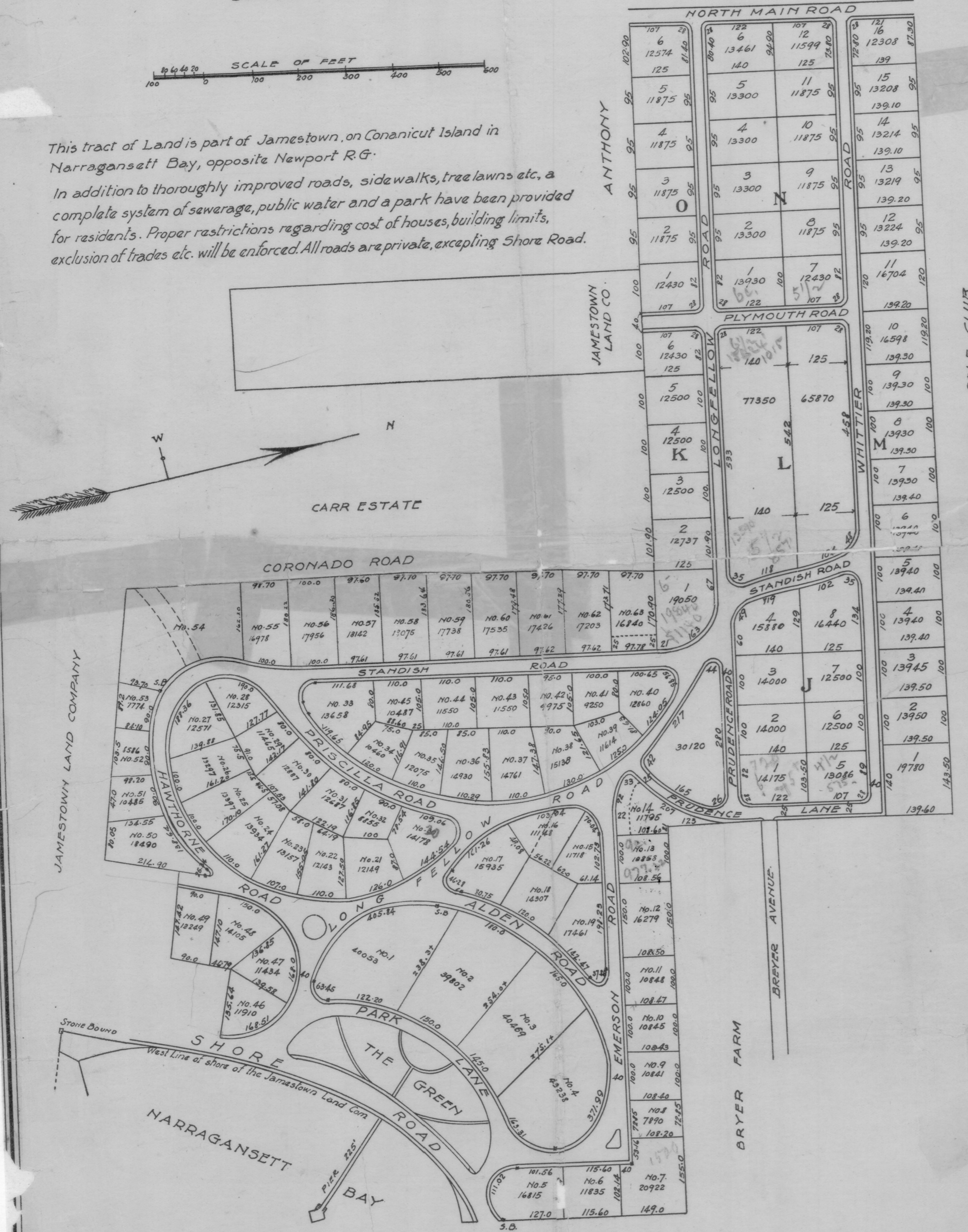
SHOREBY HILL

JAMESTOWN, R.I.



This tract of Land is part of Jamestown, on Conanicut Island in Narragansett Bay, opposite Newport R.I.

In addition to thoroughly improved roads, sidewalks, tree lawns etc., a complete system of sewerage, public water and a park have been provided for residents. Proper restrictions regarding cost of houses, building limits, exclusion of trades etc. will be enforced. All roads are private, excepting Shore Road.



HPF 272B

HPF 272B



Building line is indicated by dotted lines.
Blocks are shown by letter enclosed in circle.

Office of J. P. Cotton, C.E.
Newport, R.I. Sept. 15, 1898.

This is to certify that the roads laid out and designated on this plat, excepting the Shore Road, are not dedicated or open to the public, but are private roads held by the Jamesstown Land Company for the use of owners of lots in said plat, subject to reservations and conditions fully set forth in the conveyances made and to be made by said Company to such owners or purchasers; and it is further certified that, with the consent of all abutting proprietors upon any road or part thereof indicated upon said plat, the boundaries or location of such road may be changed at any time, or such road may be wholly closed.

In testimony whereof said Jamesstown Land Company has caused these presents to be executed by its President and attested by its Secretary with its corporate seal this *15th* day of September, 1898.

Attest: *J. P. Cotton* Secretary *Wm. L. Smith* President