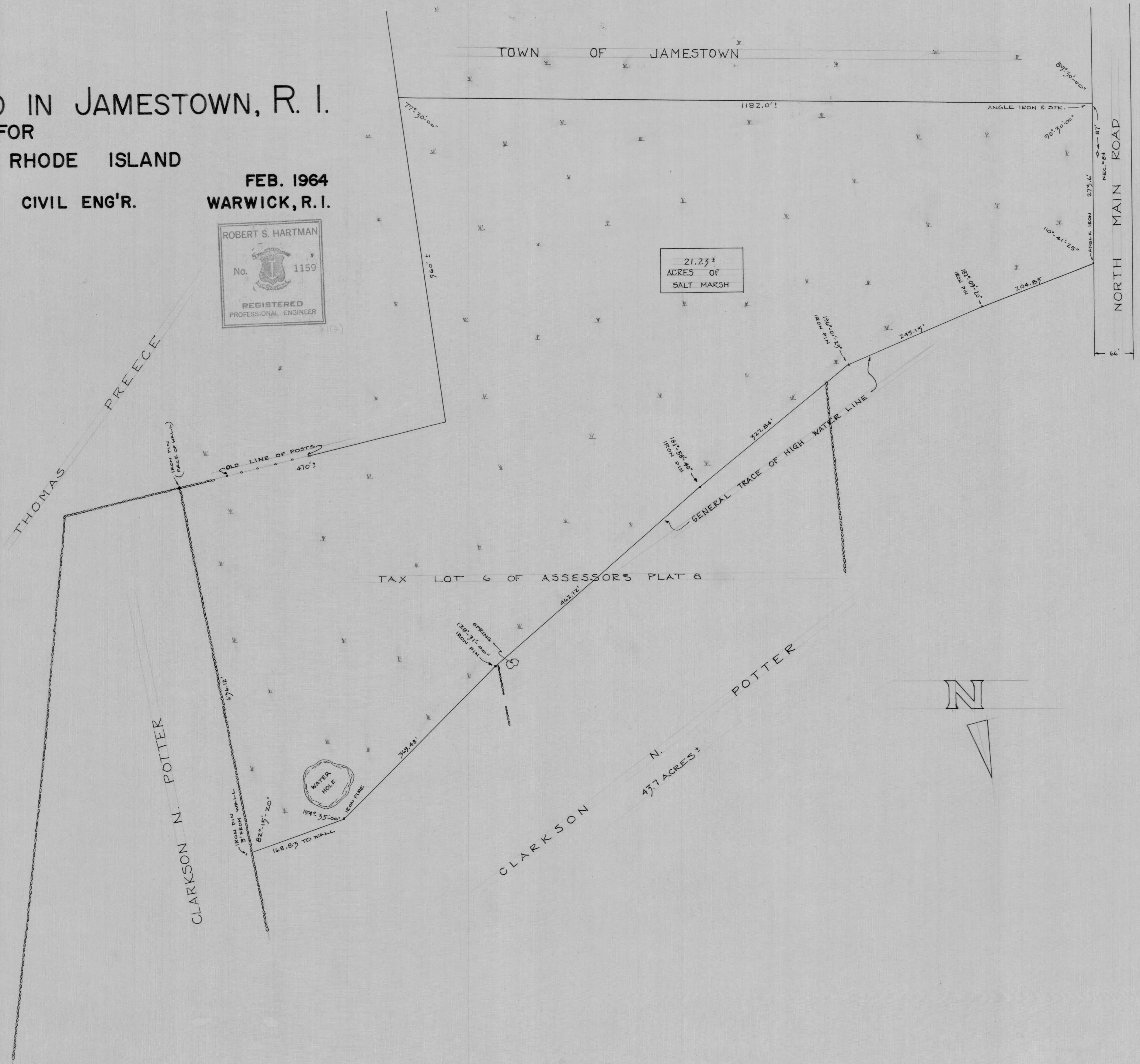


HPF265B

SURVEY OF LAND IN JAMESTOWN, R. I.

FOR
AUDUBON SOCIETY OF RHODE ISLAND
SCALE: 1" = 100'
ROBERT S. HARTMAN
CIVIL ENG'R.

FEB. 1964
WARWICK, R.I.



21.27±
ACRES OF
SALT MARSH

