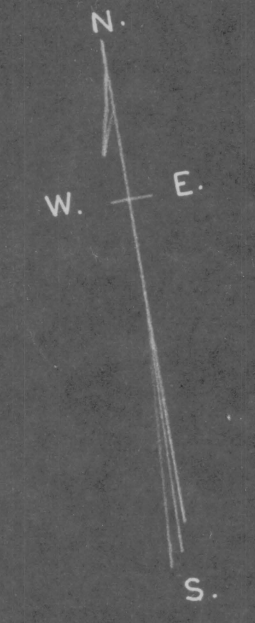
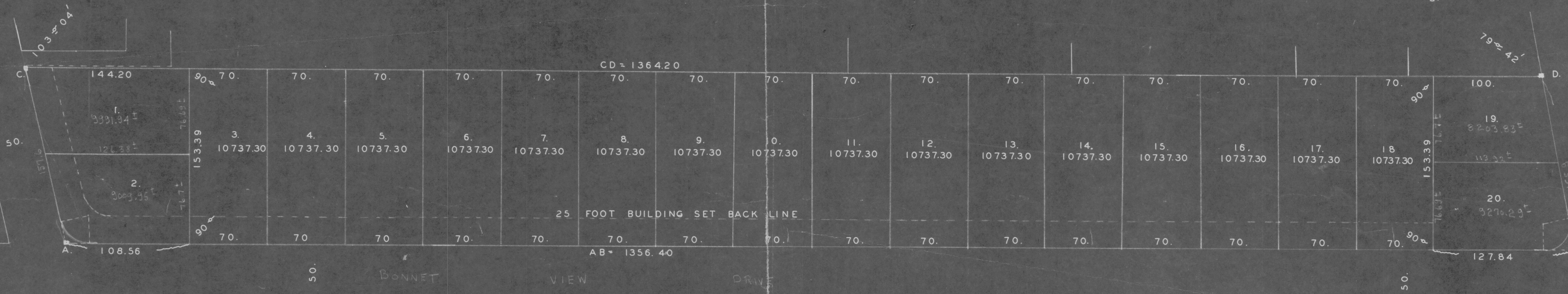


BEAVER TAIL HEIGHTS PLAT  
IN JAMESTOWN, R.I.  
BY J. A. LATHAM & SON, ENGRS., MAY, 1949.  
SCALE 50 FEET PER INCH



NARRAGANSETT BAY

BEAVER TAIL ROAD



SUBDIVISION OF LOT 45 ON ASSESSORS PLAT 12,  
(SEE DB. 39/384) AND  
LOT III ON PLAT IN PLAT BOOK I/SEC. 6.

PRELIMINARY MAP