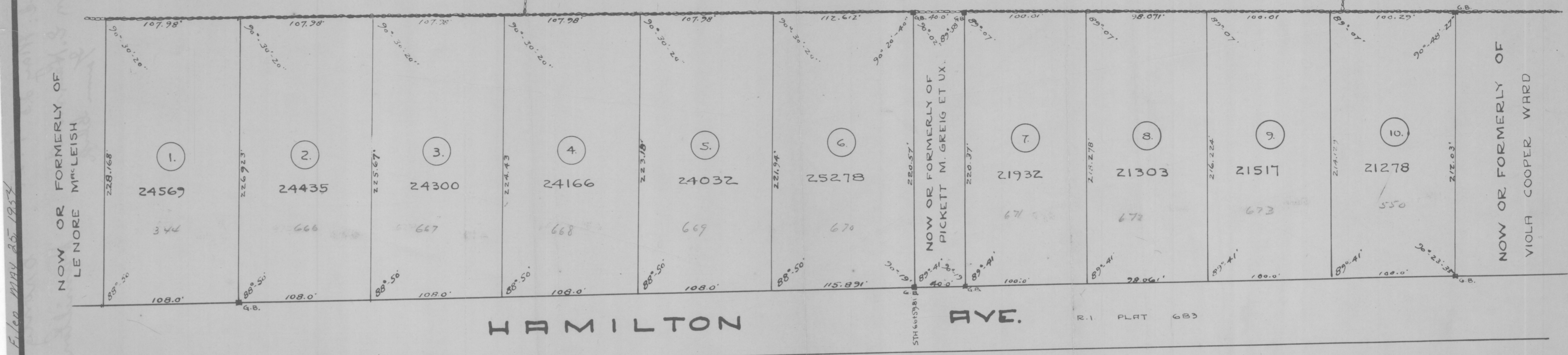


HPF247B

NOW OR FORMERLY OF CHARLES T COTTRELL ET ALS.

NOW OR FORMERLY OF PICKETT M. GREIG ET UX.



HAMILTON

AVE.

R.1 PLAT 683

CRONIG PLAT

OWNED BY HENRY CRONIG

JAMESTOWN, R.I.

APRIL 1954

SCALE 1" = 50'

PLATTED BY HAESELER, INC.

TOTAL AREA - 232,810 Sq. Ft.
ZONED RESIDENTIAL



FILED MAR 25 1954

J.

S-14312