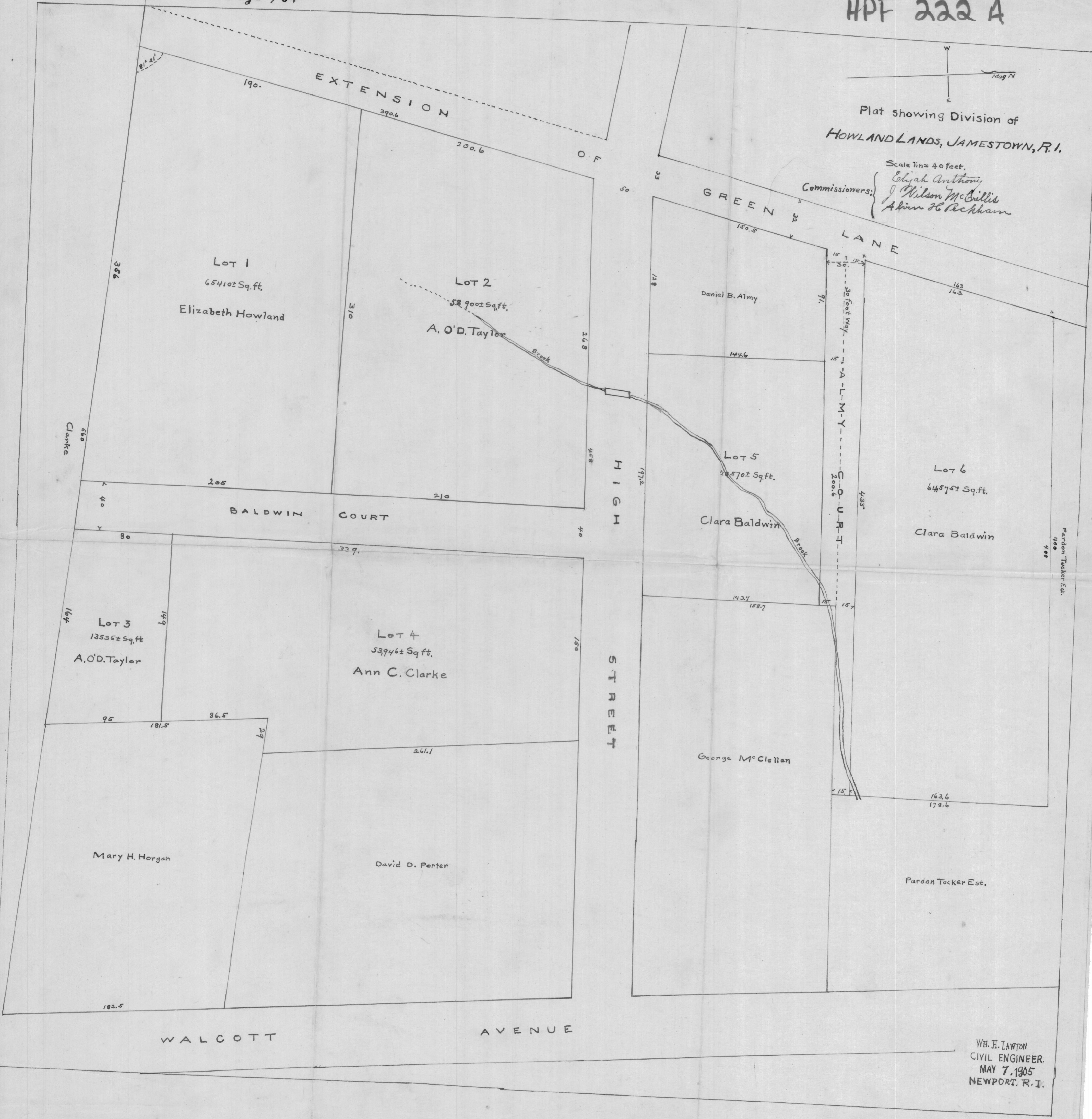
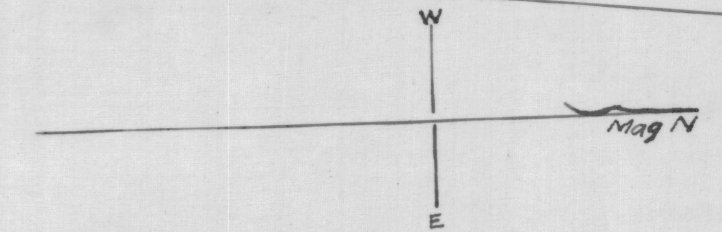


Plat showing Division of
HOWLAND LANDS, JAMESTOWN, R.I.

Scale 1 in = 40 feet.

Commissioners:
Elijah Anthony
Wilson McCallis
Abner H. Peckham



W.H. LAWTON
CIVIL ENGINEER.
MAY 7, 1905
NEWPORT, R.I.