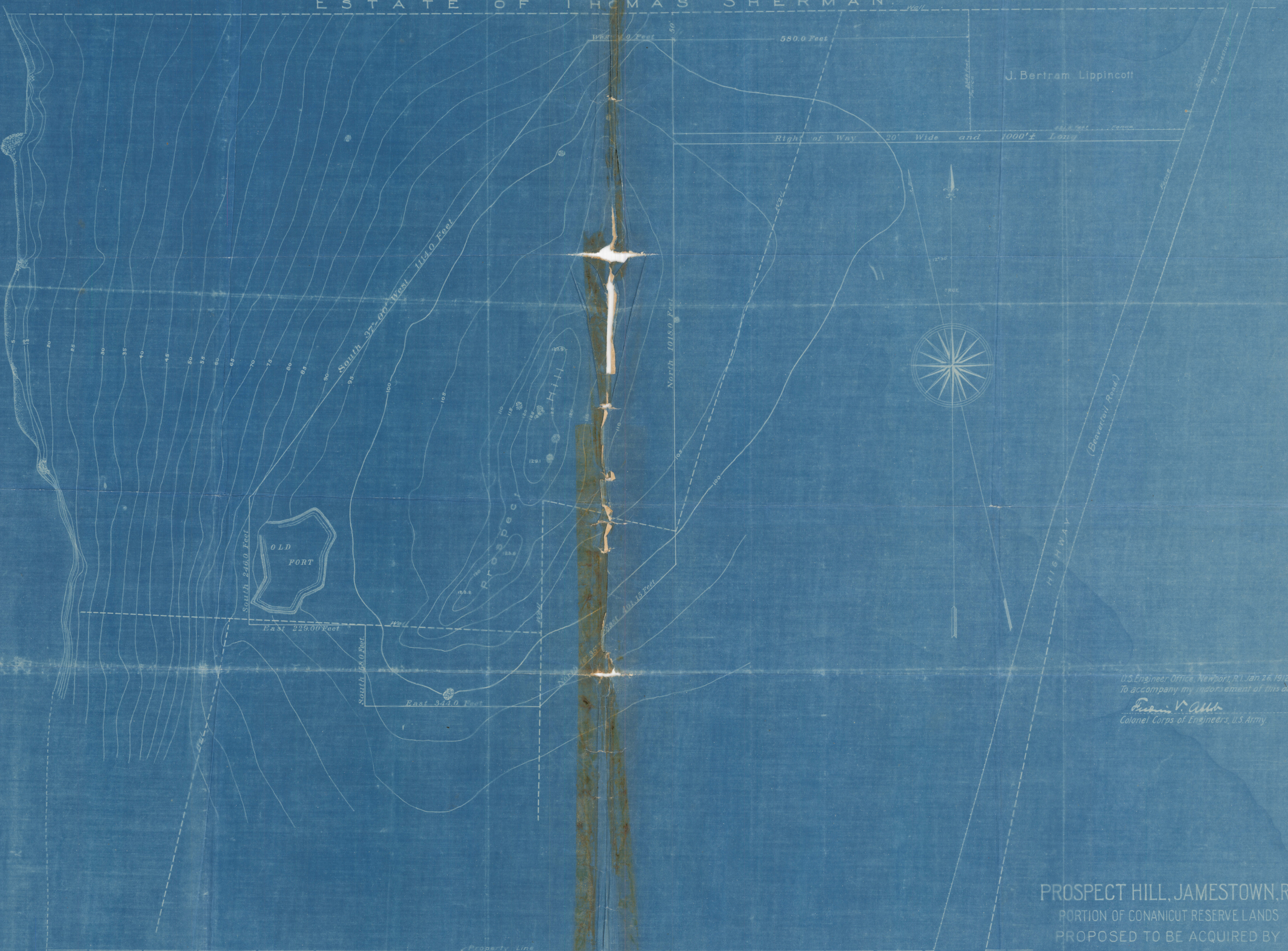


ESTATE OF THOMAS SHERMAN

NARRAGANSETT BAY (WESTERN PASSAGE)



J. Bertram Lippincott

U.S. Engineer Office, Newport, R.I., Jan 26, 1912.
 To accompany my endorsement of this date.
Fred V. Allen
 Colonel Corps of Engineers, U.S. Army.

PROSPECT HILL, JAMESTOWN, R.I.
 PORTION OF CONANICUT RESERVE LANDS
 PROPOSED TO BE ACQUIRED BY
 THE UNITED STATES.

Surveyed by Arthur J. Ober, Asst. Engr. & Geo. W. Hayden, Surveyor,
 December, 1911-January, 1912

SCALE 1:1200



NOTE: Contours and elevations refer to Mean Low Water.

Approved, January 19, 1912
Fred V. Allen
 Colonel Corps of Engineers, U.S. Army.

F.M. 22