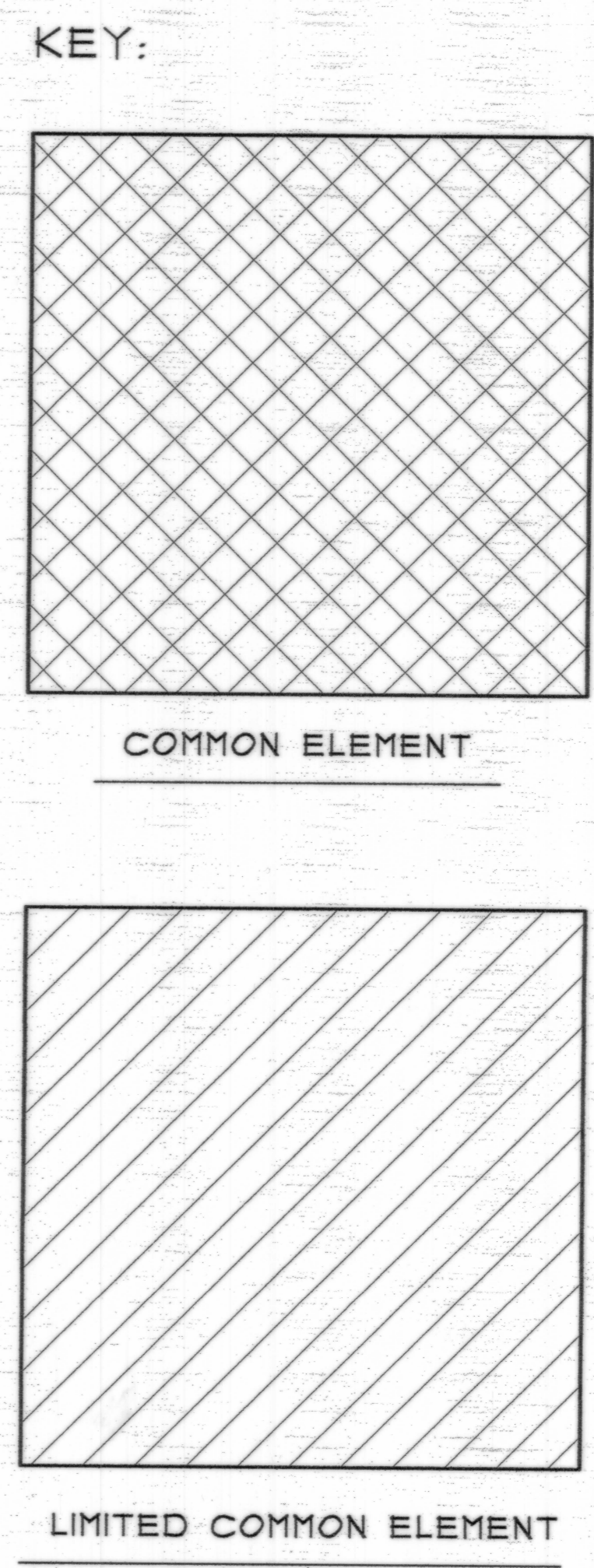
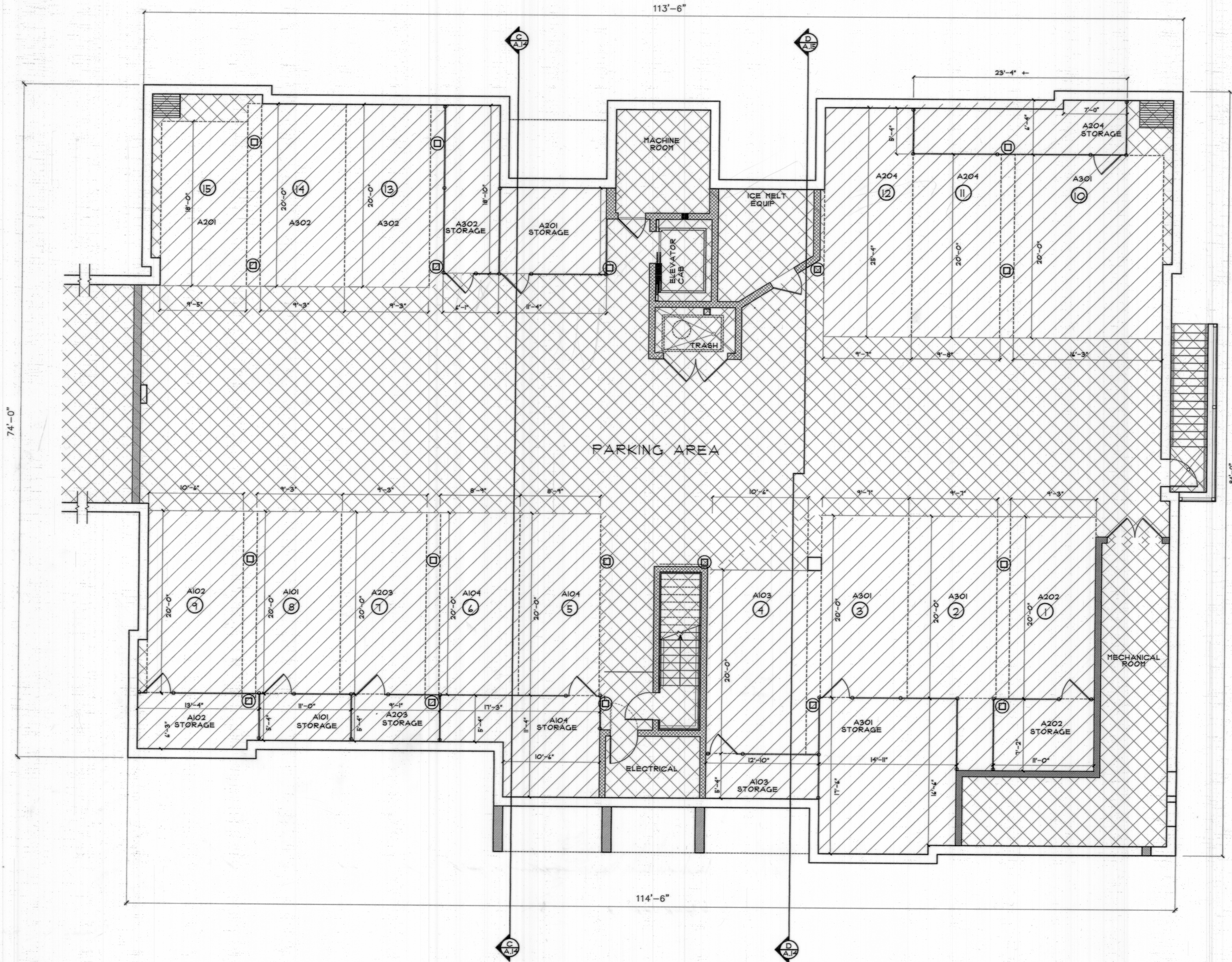


HPF # 217B



NOTES:  
 1. BASEMENT TO FIRST FLOOR HEIGHT IS 9'-0"  
 2. ALL DIMENSIONS AND DATA PROVIDED BY NORTHSIDE DESIGN ASSOCIATES.

The herein plan for The Jamestown Place Condominium was drawn in accordance with the provisions of RIGL 34-36-1-2.09 and contains all information required by said section. I certify that all Units are substantially completed.

*Ryan Little* PE, ASHPC  
 NORTHEAST ENGINEERS AND CONSULTANTS INC.

SHEET NO. <b>A.O-A6</b>	DATE	REVISION DESCRIPTION	REVISION #
		APPENDIX #	APPENDIX #
BASEMENT/GARAGE PLAN		DATE	REVISION DESCRIPTION
JAMESTOWN PLACE		4/30/04	APPENDIX #
CONDOMINIUM SURVEY		10/14/04	APPENDIX #
35 KNOWLES COURT		3/23/05	REVISION OF STORAGE UNITS AND DOORS
JAMESTOWN, RI 02835		08/07/07	PARKING AND STORAGE # CHANGES
		RECEIVED RECORD	REGISTRATION
		NOV 15 2007	201114P
		JAMESTOWN	GLENN
		ARLENE D.	
<b>ERT ARCHITECTS, INC.</b> ARCHITECTURE PLANNING CONSTRUCTION PO BOX 343 YARMOUTHPORT, MA 02876 28 NARRAGANSETT AVE. JAMESTOWN, RI 02835 TEL: 781 938 3828 FAX: 781 938 3888		<b>NORTHSIDE DESIGN ASSOCIATES</b> DISTINCTIVE RESIDENTIAL & COMMERCIAL DESIGN 1 MAIN STREET • YARMOUTHPORT • MA 02876 (508) 745-2515 (Cell) 955-8805	