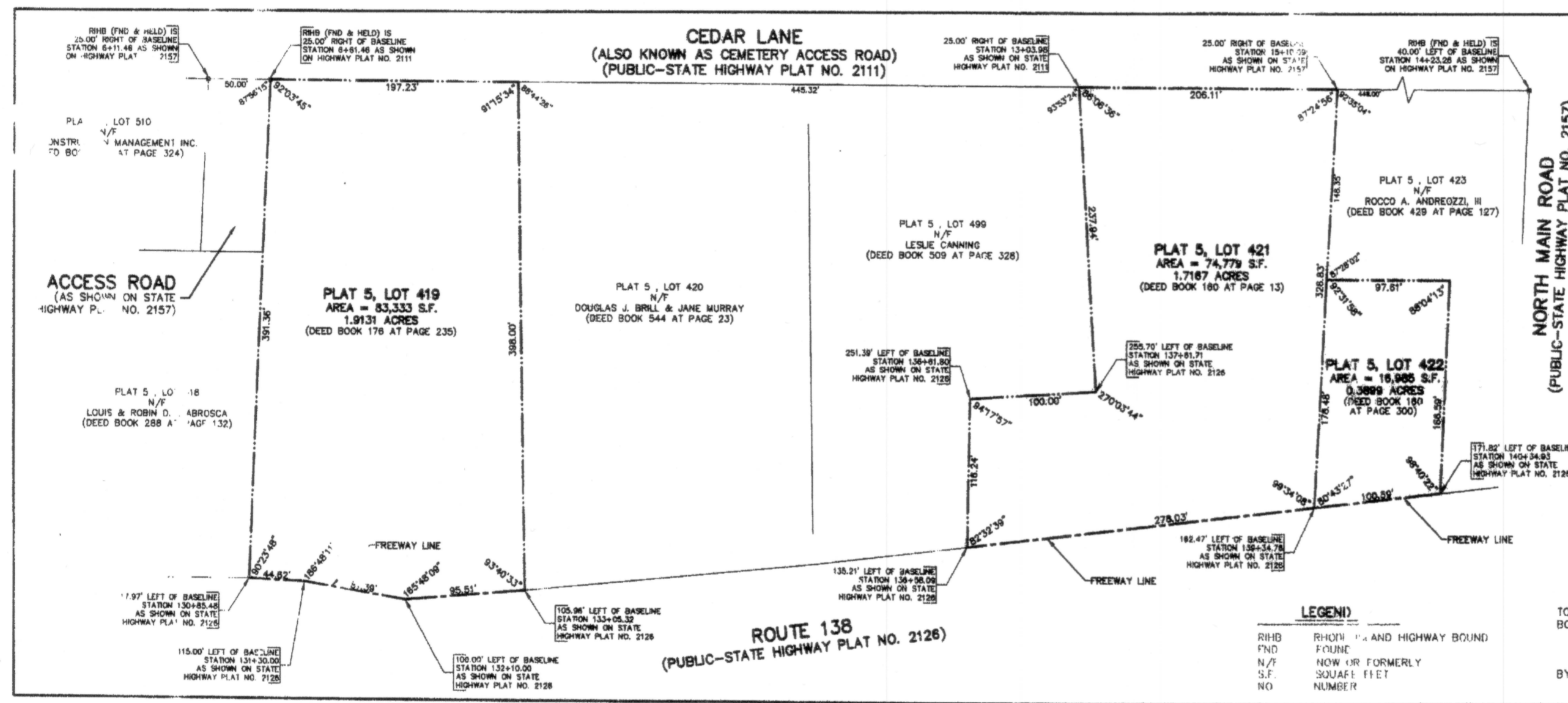


HPF #204 B

BK: 574 PG: 333  
INST: 2782



THE STATE OF RHODE ISLAND  
AND PROVIDENCE PLANTATIONS  
TO  
THE TOWN OF JAMESTOWN  
PLAT 5, LOT 419 83,333 S.F. OR 1.9131 ACRES  
PLAT 5, LOT 421 74,779 S.F. OR 1.7187 ACRES  
PLAT 5, LOT 422 16,985 S.F. OR 0.3899 ACRES

RHODE ISLAND  
DEPARTMENT OF TRANSPORTATION  
DIVISION OF PUBLIC WORKS

PLAT  
showing land situated in  
THE TOWN OF JAMESTOWN  
conveyed by  
THE STATE OF RHODE ISLAND  
& PROVIDENCE PLANTATIONS

THE BOUNDARY LINE ESTABLISHED BY THIS PLAT NO. 2126A ARE  
DELINEATED AND DEFINED AS FOLLOWS:  
STATE HIGHWAY LINE WHERE THIS BOUNDARY SYMBOL IS UTILIZED, EXISTING  
ACCESS REMAINS OR EQUIVALENT ACCESS WILL BE  
PROVIDED FROM ABUTTING PROPERTY, ROADS, STREETS  
OR HIGHWAYS TO THE ADJACENT TRAVELED WAY.  
FREEWAY LINE WHERE THIS BOUNDARY SYMBOL IS UTILIZED, ACCESS  
FROM ABUTTING PROPERTY TO THE TRAVELED WAY IS  
PROHIBITED ACROSS SAID BOUNDARY LINE.

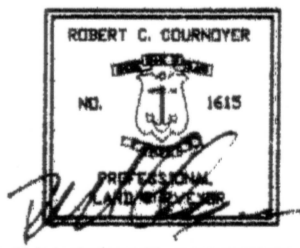
FILED IN THE OFFICE OF THE TOWN CLERK OF THE TOWN  
OF JAMESTOWN ON THE \_\_\_\_ DAY OF \_\_\_\_\_, 2005

AS APPROVED BY THE STATE PROPERTIES COMMITTEE  
ON THE 20<sup>th</sup> DAY OF September, 2005

SUBMITTED *Kevin F. Farnham*  
CHIEF DESIGN ENGINEER  
APPROVED *Robert C. Cournoyer*  
CHIEF ENGINEER  
APPROVED *James J. Galt*  
DIRECTOR OF TRANSPORTATION

DEPARTMENT OF TRANSPORTATION  
STATUTE REFERENCE  
TITLE 37, CHAPTER 7 OF THE GENERAL  
LAWS OF RHODE ISLAND, 1958, AS AMENDED

SURVEY REFERENCES RECEIVED FOR RECORD  
STATE HIGHWAY PLAT NO. 2111 JAMESTOWN TOWN CLERK  
STATE HIGHWAY PLAT NO. 2126 MALENE D. PETTY  
STATE HIGHWAY PLAT NO. 2127



I HEREBY CERTIFY THAT THIS SURVEY AND PLAN CONFORMS  
TO A CLASS 1 STANDARD AS ADOPTED BY THE RHODE ISLAND  
BOARD OF REGISTRATION FOR PROFESSIONAL LAND SURVEYORS.  
BY: *Robert C. Cournoyer* 9/2/05  
ROBERT C. COURNOYER, PLS#1615 DATE

LEGEND  
RHHD RHODE ISLAND AND HIGHWAY BOUND  
FND FENCE  
N/F NOW OR FORMERLY  
S.F. SQUARE FEET  
NO NUMBER

SCALE 60' PER INCH  
SHEET 1 OF 1  
PLAT NO. 2126A