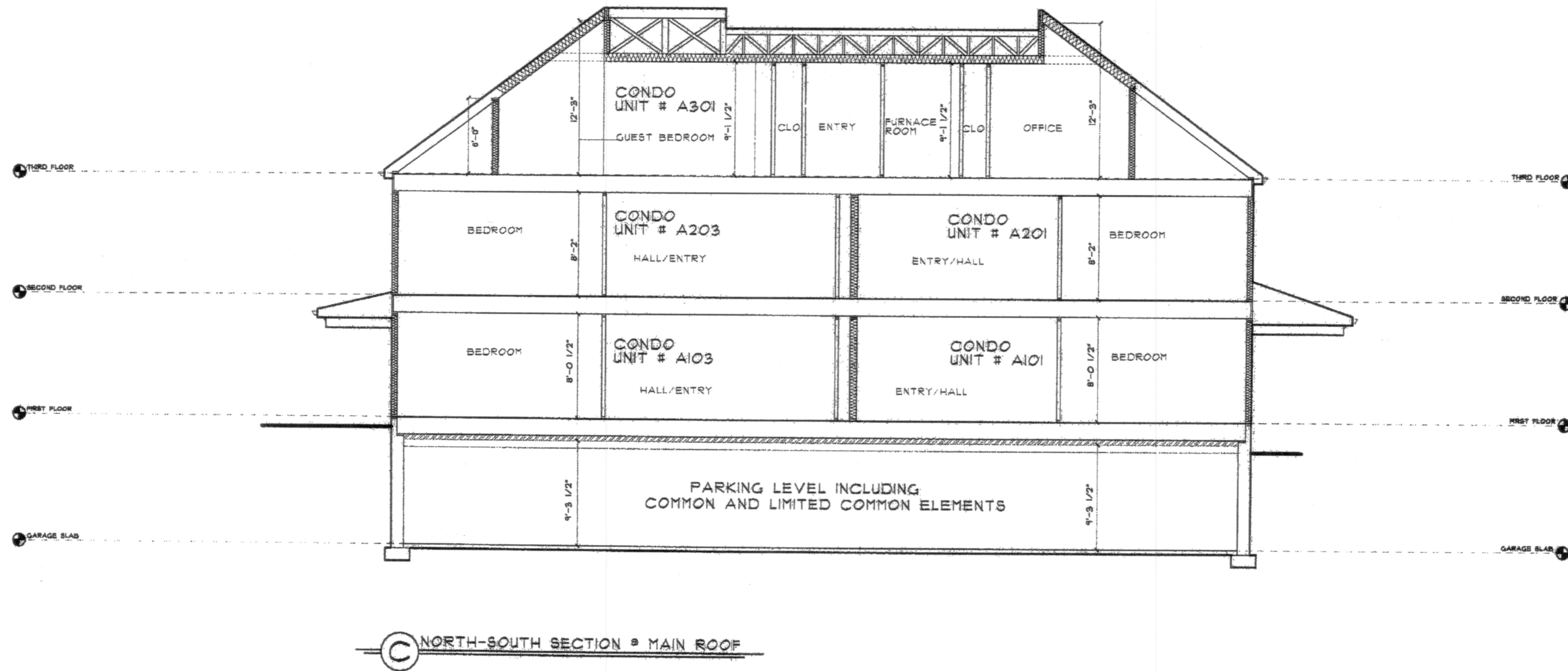


HPF 202B

BK: 566 PG: 328
18511 27225



The herein plan for The Jamestown Place Condominium was drawn in accordance with the provisions of RGL 84-36-1-2.09 and contains all information required by said section. I certify that all Units are substantially completed.

[Signature] R. E. Linn, # 7866
NORTHEAST ENGINEERS AND CONSULTANTS INC.

REVISIONS	DATE	REVISIONS	DATE	REVISIONS
REV'S 2/28/03 M.T.G.	8/9/03	REV'S 3/8/03 M.T.G.	10/24/03	BUILDING PERMIT SET
REV'S 3/17/03 COL'S / FTG.S UPDATE	1/9/04	COL'S / FTG.S UPDATE	1/9/04	FINAL SET
DWG UPDATES / REV'S		DWG UPDATES / REV'S		CONSTRUCTION SET

ERT ARCHITECTS, INC. ARCHITECTS PLANNING CONSTRUCTION 10 BOX 343 YARMOUTHPORT, MA 02876 68 NARRAGANSETT AVE JAMESTOWN, RI 02835 TEL: 401 368 6880	NORTHSIDE DESIGN ASSOCIATES DISTRICTS RESIDENTIAL & COMMERCIAL DESIGN 141 MAIN STREET - YARMOUTHPORT, MA 02876 (401) 368-8210

RECEIVED FOR RECORD 10/25/2005 JAMESTOWN TOWN CLERK ARNOLD D. PETT	DATE:
SHEET NO. A.14	