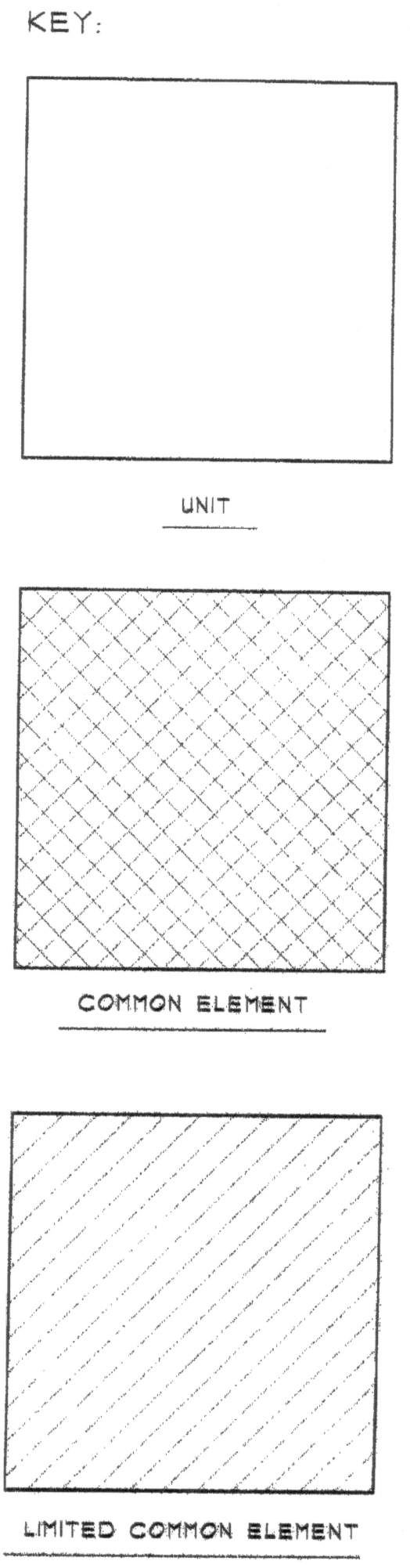
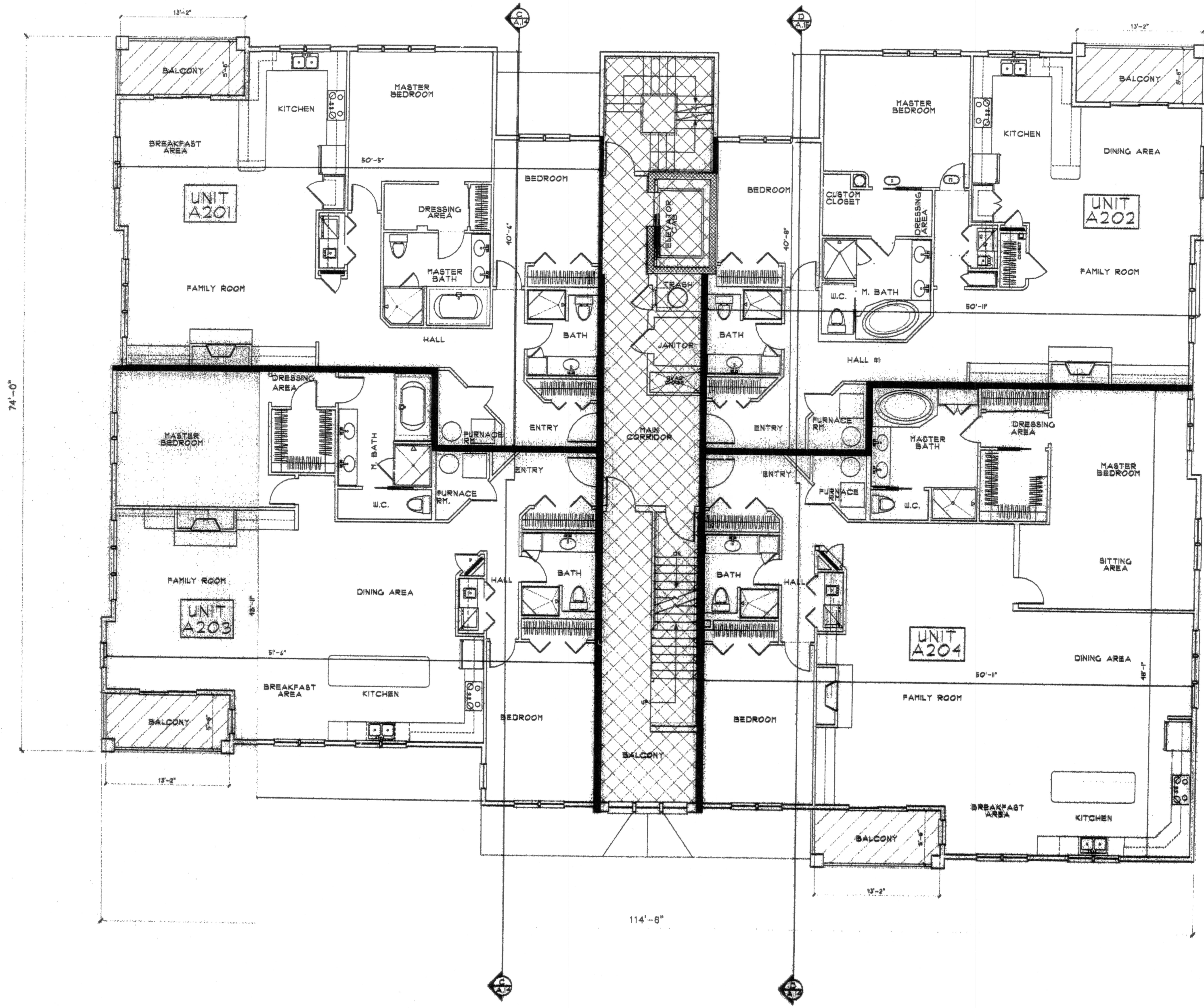


HPF 201B



The herein plan for The Jamestown Place Condominium was drawn in accordance with the provisions of R.G.L. 34-38-1-2.09 and contains all information required by said section. I certify that all Units are substantially completed.

*[Signature]*  
 License # 2866  
 NORTHEAST ENGINEERS AND CONSULTANTS INC.

REVISION DESCRIPTION	ADDDUM #2
	ADDDUM #6
DATE	4/30/04
	9/08/04
2	6
REGISTRATION	
<b>ERT ARCHITECTS, INC.</b> ARCHITECT PLANNING CONSTRUCTION PO BOX 343 YARMOUTHPORT, MA 02875 28 NARRAGANSETT AVE. JAMESTOWN, RI 02855 TEL/FAI 401.982.8888	
<b>NORTHSIDE DESIGN ASSOCIATES</b> DISTINCTIVE RESIDENTIAL & COMMERCIAL DESIGN 145 MAIN STREET • YARMOUTHPORT, MA 02875 (401) 982-2210 (Fax) 982-9822	
<b>SECOND FLOOR PLAN</b> <b>JAMESTOWN PLACE</b> CONDOMINIUM SURVEY 35 KNIGHTS COURT JAMESTOWN, RI 02855	
SHEET NO.	A.2-A
DATE	
RECEIVED FOR RECORD 07/15/2008 01:22:45 PM DEPARTMENT OF REGISTRATION MALDEN D. PETTY	