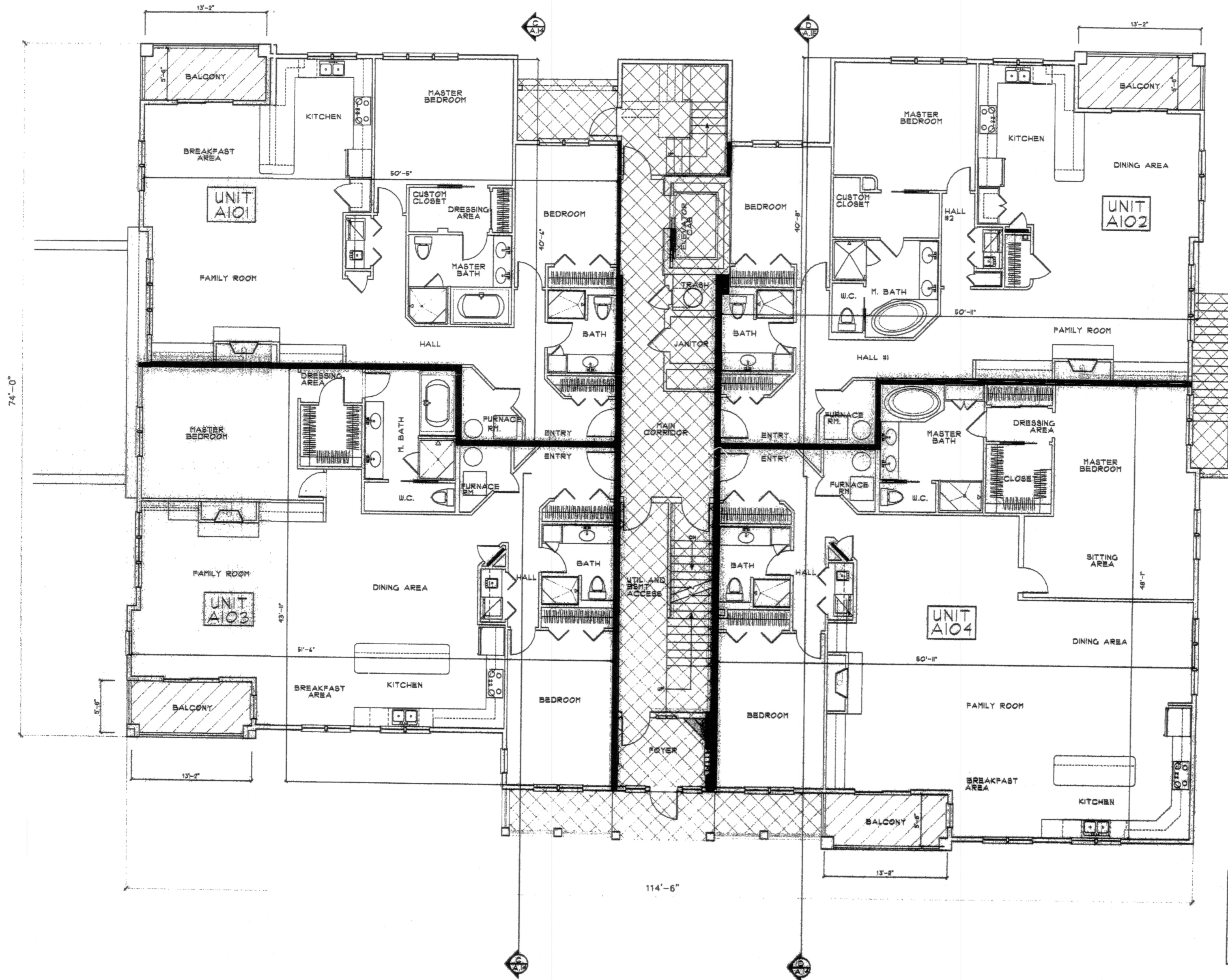
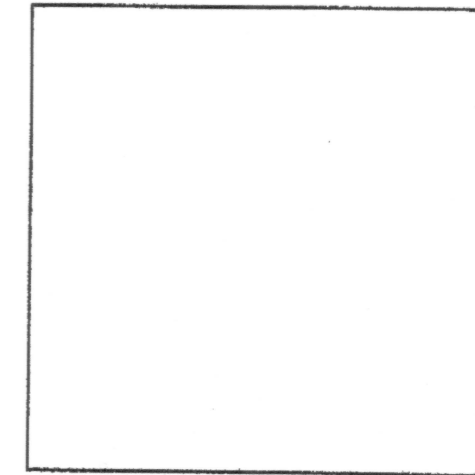


HPF 201 A

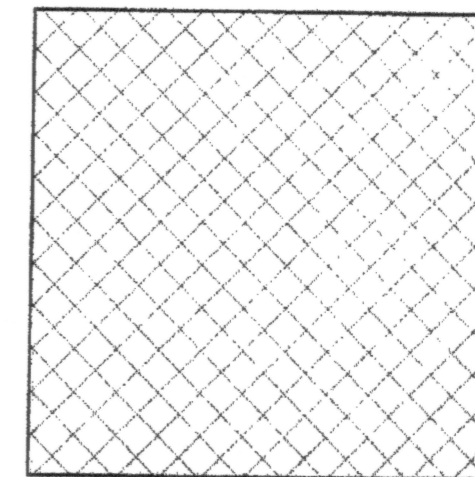
BK: 566 PG: 325
 INST: 27222



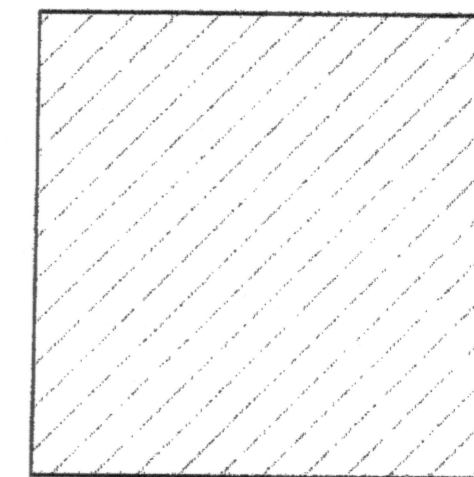
KEY:



UNIT



COMMON ELEMENT



LIMITED COMMON ELEMENT

The herein plan for The Jamestown Place Condominium was drawn in accordance with the provisions of RGL 34-36-1-2.09 and contains all information required by said section. I certify that all Units are substantially completed.

[Signature]
 R.T. DE LORCA #1966
 NORTHEAST ENGINEERS AND CONSULTANTS INC.

REVISION DESCRIPTION	
DATE	ADDENDUM #
4/20/04	ADDENDUM #6
9/08/04	
REGISTRATION	
ERT ARCHITECTS, INC. ARCHITECT PLANNER CONSULTANT PO BOX 543 HANNOVERPORT, MA 02045 28 NARRAGANSETT AVE JAMESTOWN, RI 02835 TEL: 401 588-3648	
NORTHSIDE DESIGN ASSOCIATES DISTINCTIVE RESIDENTIAL & COMMERCIAL DESIGN 10001 W. 11TH AVENUE, SUITE 100 DENVER, CO 80231 (303) 750-2210	
MAIN FLOOR PLAN JAMESTOWN PLACE CONDOMINIUM SURVEY 35 KNOWLES COURT JAMESTOWN, RI 02835	
SHEET NO.	DATE
A.1-A	
RECEIVED FOR RECORD	DATE
7/15/2005	01/27/2004
REGISTERED	BY
BLAKE D. PETTY	