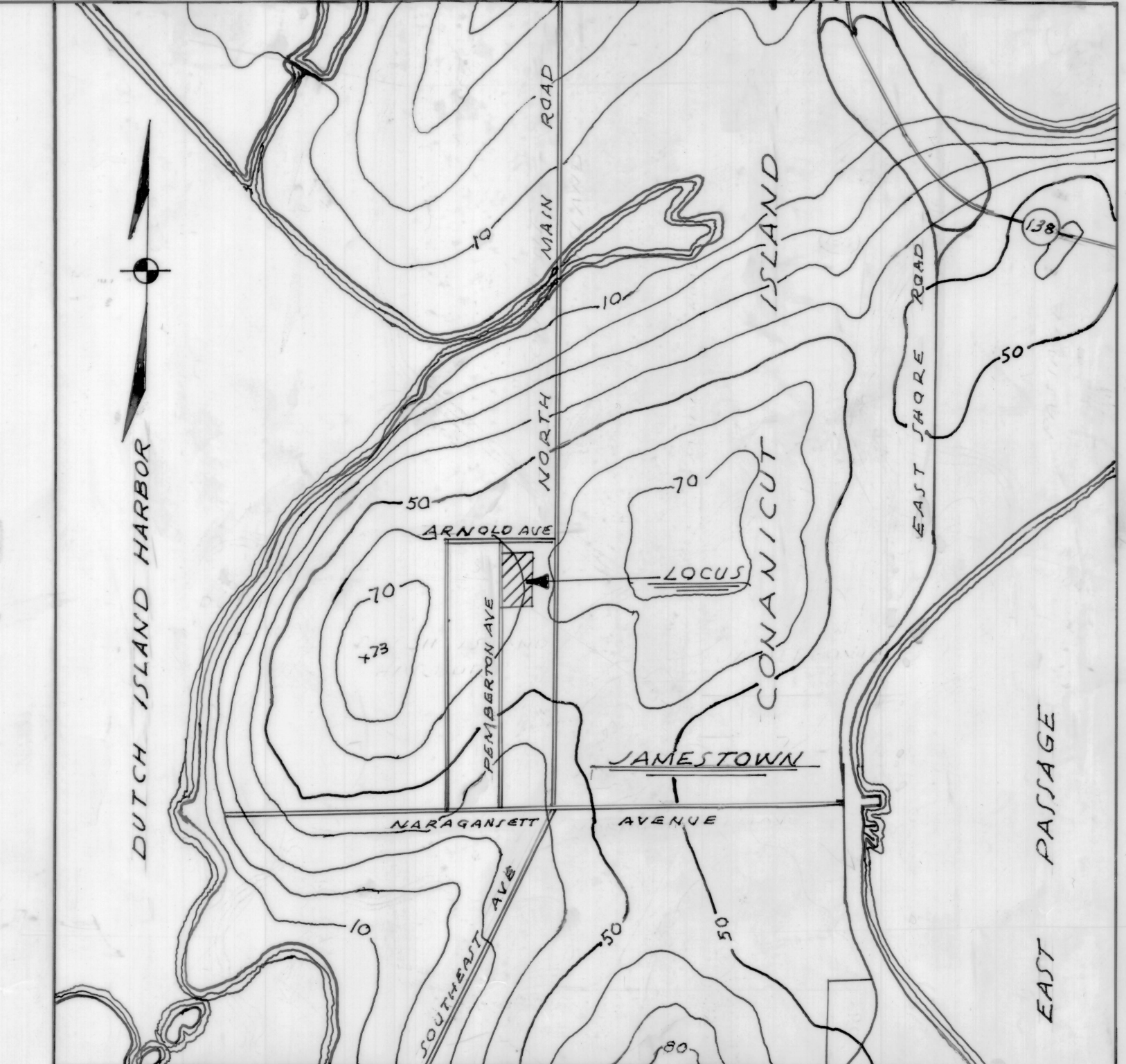
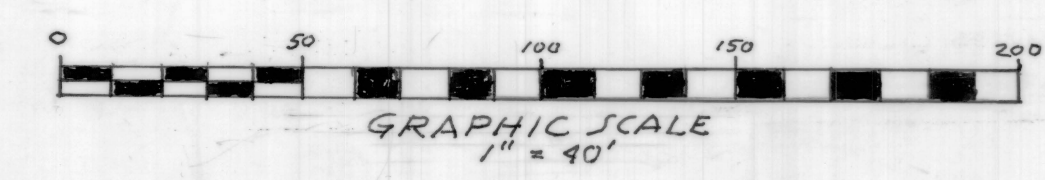


NOTE:  
AREA ZONED R-20



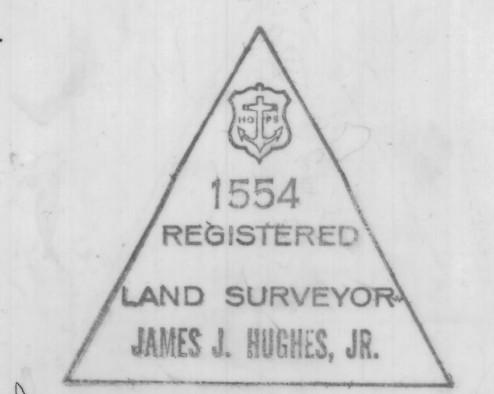
LOCATION MAP

SCALE 1" = 1000'



**SOUTHEASTERN NEW ENGLAND PLAT**  
 SUBDIVISION  
 JAMESTOWN, R.I.  
 SOUTHEASTERN NEW ENGLAND REALTY CO., INC. - OWNER  
 SCALE 1" = 40' SEPTEMBER 21, 1976  
 JAMES J. HUGHES, JR. LAND SURVEYOR

Approved  
 Jamestown Planning Commission  
 November 3, 1976  
 Kenneth J. Payne  
 Chairman



James J. Hughes, Jr.

Received October 20, 1976, Jamestown Planning Commission  
 K. Payne