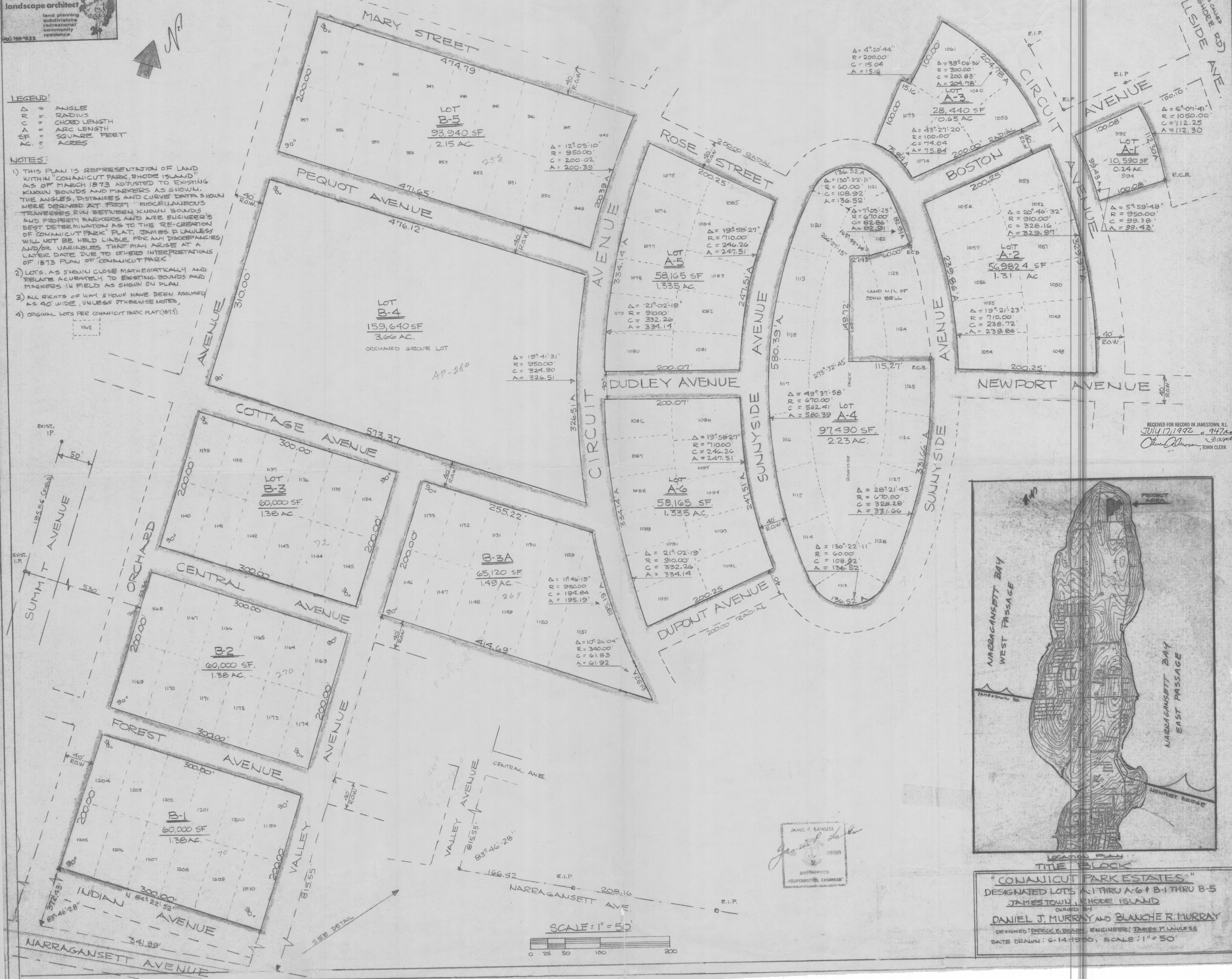


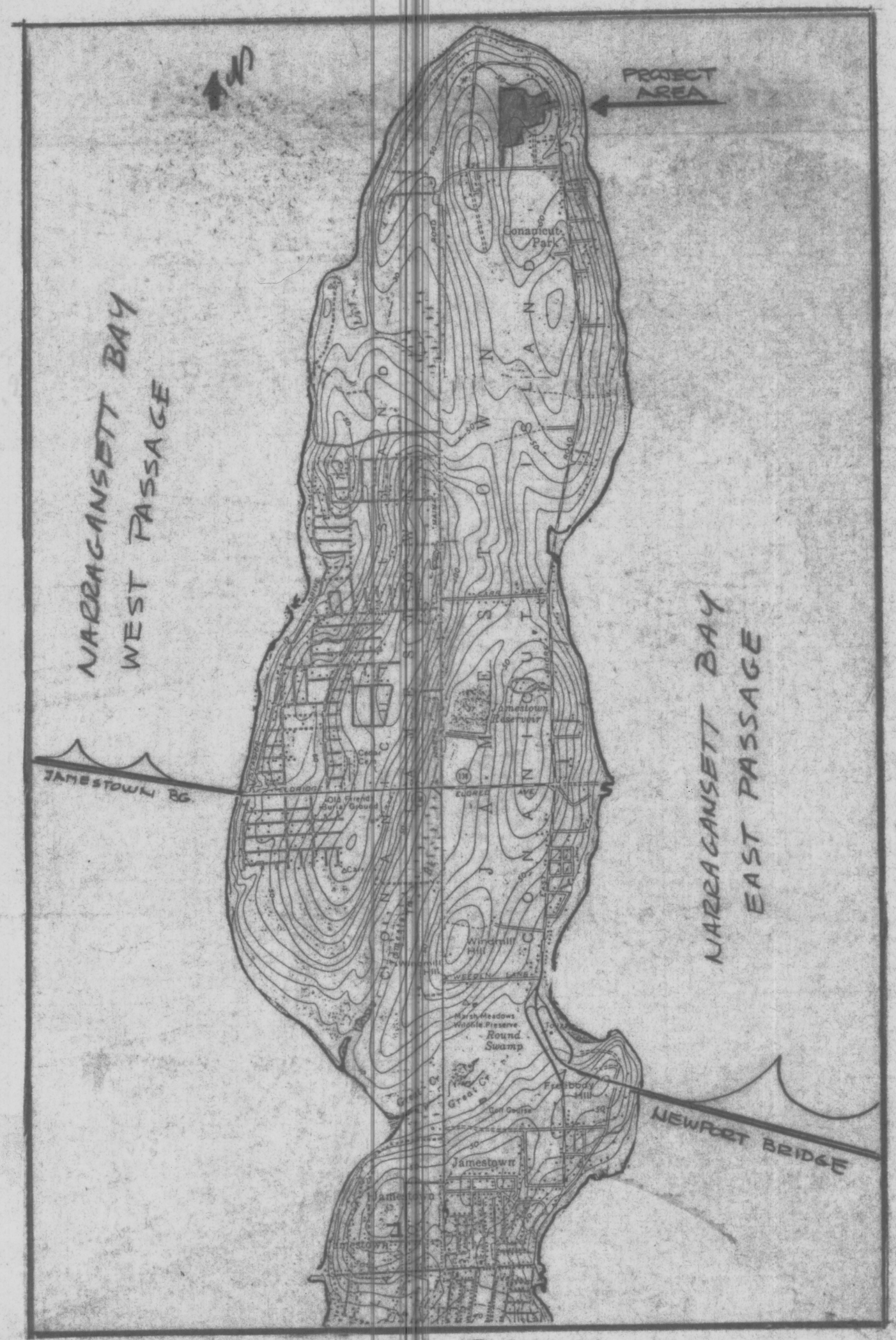
PATRICK E. BRADY  
landscape architect  
land planning  
subdivisions  
recreational  
community  
residence

LEGEND:  
ANGLE  
RADIUS  
CHORD LENGTH  
ARC LENGTH  
SQUARE FEET  
ACRES

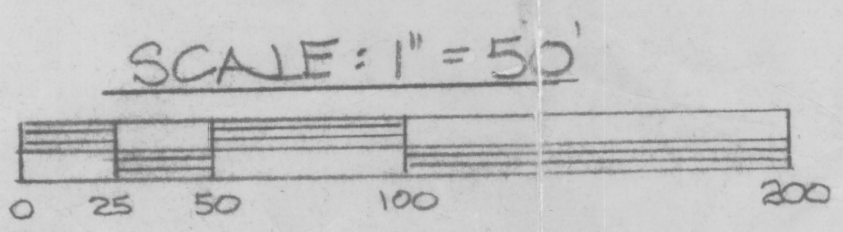
NOTES:  
1) THIS PLAN IS REPRESENTATION OF LAND WITHIN CONANICUT PARK, RHODE ISLAND AS OF MARCH 1873 ADJUSTED TO EXISTING KNOWN BOUNDS AND MARKERS AS SHOWN. THE ANGLES, DISTANCES AND CURVE DATA SHOWN WERE DERIVED AT FROM MISCELLANEOUS TRAVERSES RUN BETWEEN KNOWN BOUNDS AND PROPERTY MARKERS AND ARE ENGINEER'S BEST DETERMINATION AS TO THE RE-CREATION OF CONANICUT PARK PLAT, THUS, WITHOUT LIABILITY WILL NOT BE HELD LIABLE FOR ANY DISCREPANCIES AND/OR VARIATIONS THAT MAY ARISE AT A LATER DATE DUE TO OTHERS INTERPRETATIONS OF 1873 PLAN OF CONANICUT PARK.  
2) LOTS, AS SHOWN CLOSE MATHEMATICALLY AND RELATE ACCURATELY TO EXISTING BOUNDS AND MARKERS IN FIELD AS SHOWN ON PLAN.  
3) ALL RIGHTS OF WAY SHOWN HAVE BEEN ASSUMED AS 40' WIDE, UNLESS OTHERWISE NOTED.  
4) ORIGINAL LOTS PER CONANICUT PARK PLAT (1873)



RECEIVED FOR RECORD IN JAMESTOWN, R.I.  
JULY 17, 1992 at 947a.m.  
Town Clerk



"CONANICUT PARK ESTATES"  
DESIGNATED LOTS A-1 THRU A-6 + B-1 THRU B-5  
JAMESTOWN, RHODE ISLAND  
OWNED BY  
DANIEL J. MURRAY AND BLANCHE R. MURRAY  
DESIGNED: PATRICK E. BRADY, ENGINEER; JAMES P. LAWLESS  
DATE DRAWN: 6-14-1990; SCALE: 1" = 50'



JAMES P. LAWLESS  
REGISTERED PROFESSIONAL ENGINEER