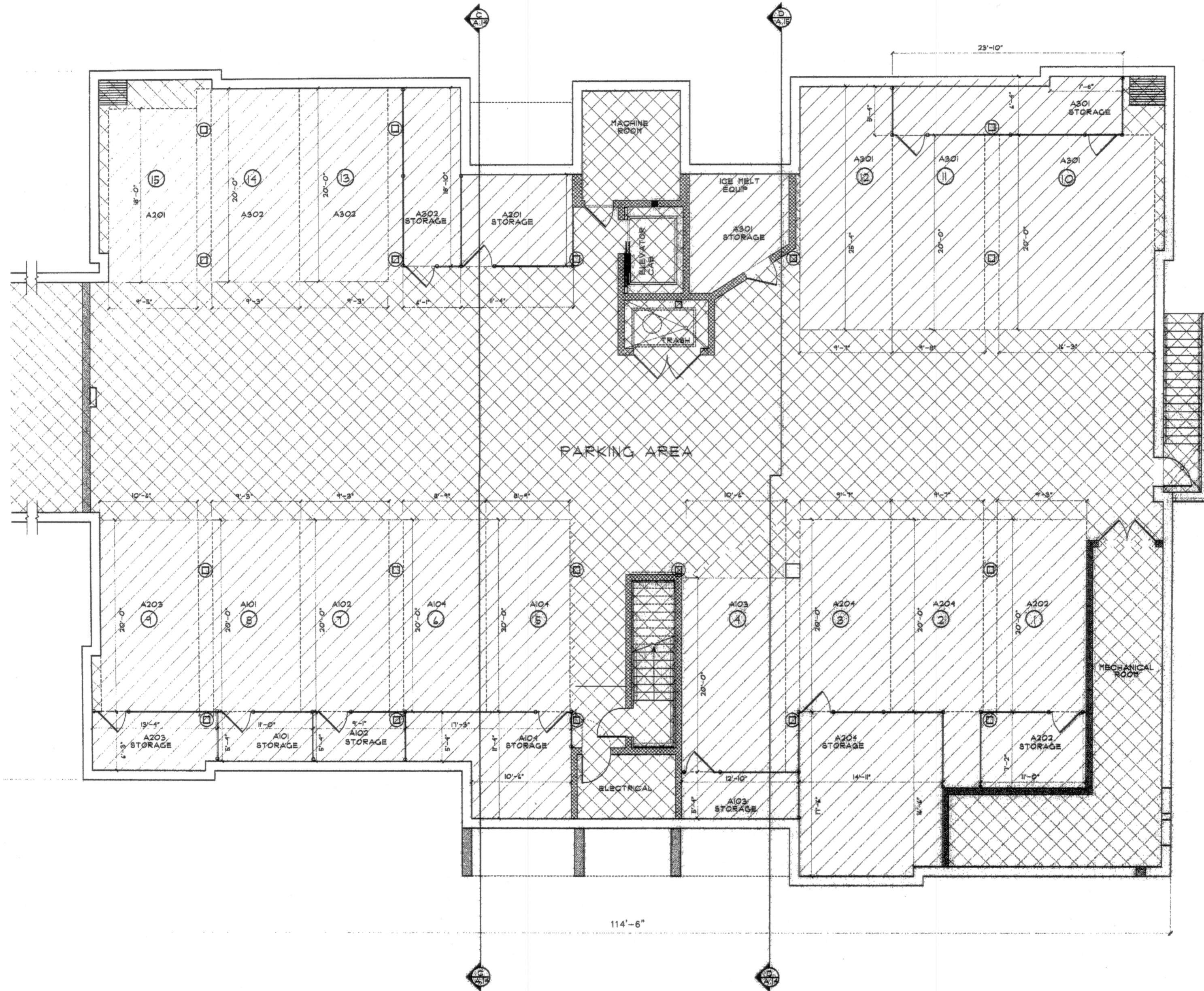
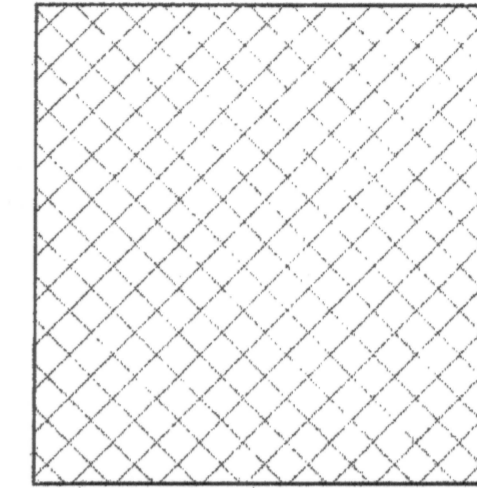


HPF 2003

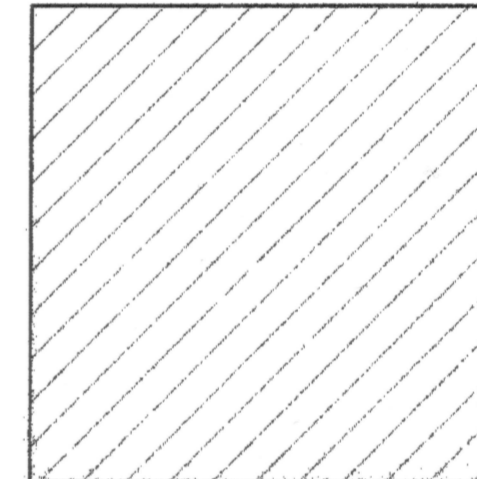
BK: 546 PG: 324
 RST: 2723



KEY:



COMMON ELEMENT



LIMITED COMMON ELEMENT

The herein plan for The Jamestown Place Condominium was drawn in accordance with the provisions of RIGL 34-36-1-2.09 and contains all information required by said section. I certify that all Units are substantially completed.

[Signature] RT License # 7866
 NORTHEAST ENGINEERS AND CONSULTANTS INC.

REVISION DESCRIPTION	DATE	ADDENDUM #2	ADDENDUM #3	ADDENDUM #4
	4/30/04		10/14/04	3/23/05
				REVISION OF STORAGE UNITS AND DOORS
REGISTRATION				
ERT ARCHITECTS, INC. ARCHITECTURE PLANNING CONSTRUCTION PO BOX 343 YARMOUTHPORT, MA 02875 28 HARRISANSETT AVE. JAMESTOWN, RI 02835 TEL/FAX 508-382-8883				
NORTHSIDE DESIGN ASSOCIATES DISTINCTIVE RESIDENTIAL & COMMERCIAL DESIGN 14 MAIN STREET - YARMOUTHPORT, MA 02875 (508) 361-8802				
BASEMENT/GARAGE PLAN JAMESTOWN PLACE CONDOMINIUM SURVEY 35 KNOWLES COURT JAMESTOWN, RI 02835				
SHEET NO.	DATE:	RECEIVED FOR RECORD		
A.O-A6		07/15/2005	01/11/2005	ARLEN D. PETTIT