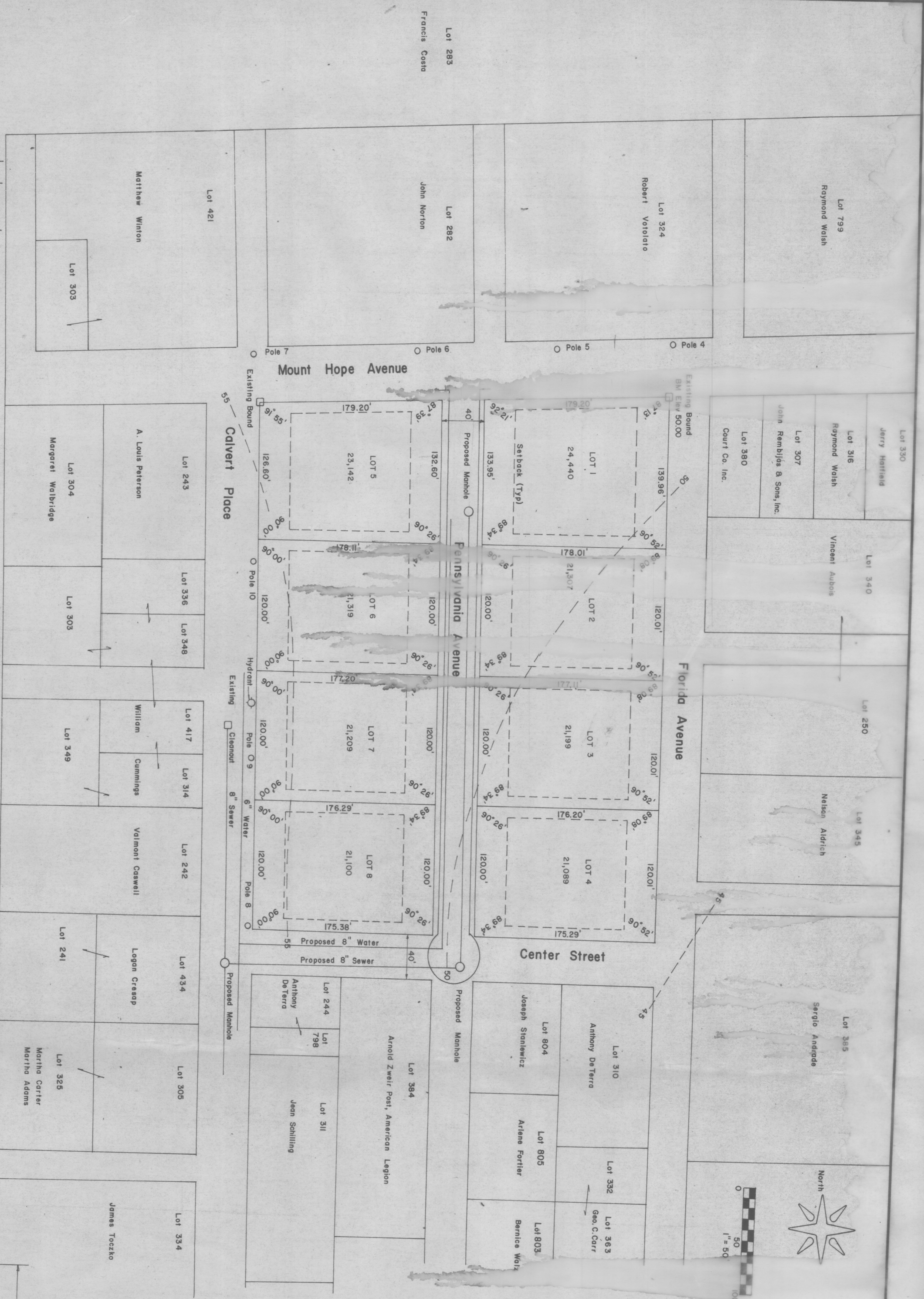


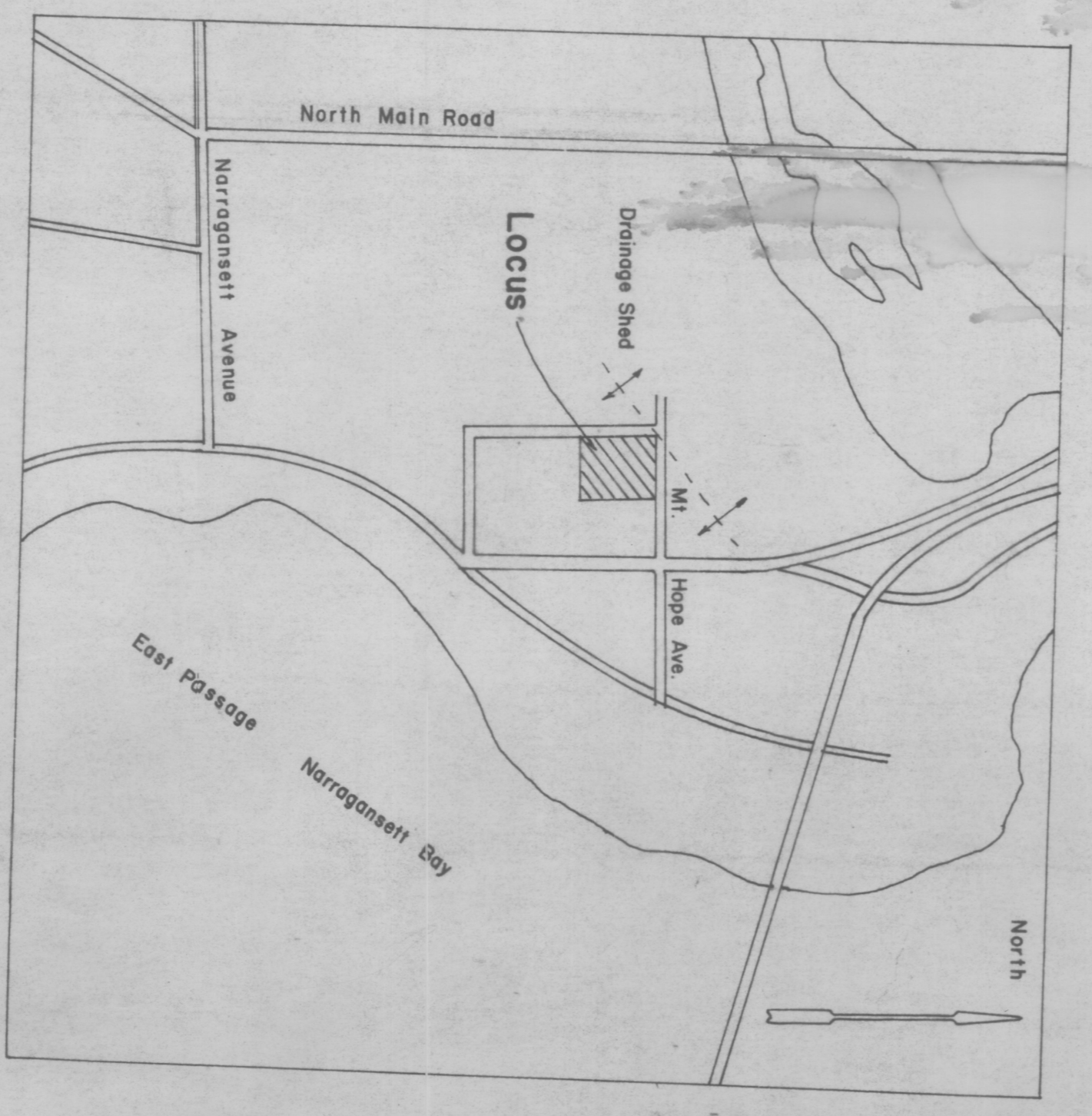
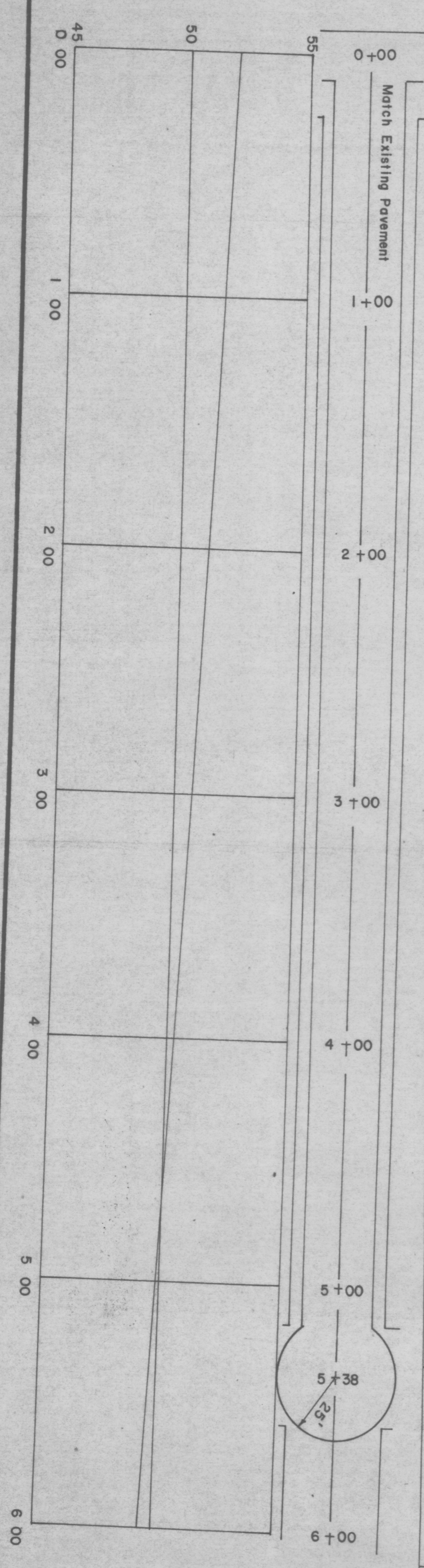
**MOUNT HOPE PARK**  
4 Acres, 8 Lots, Zoned R20  
Owned by John C. Rembly & Sons, Inc.  
Designed by Peter L. Ryan, PE

Preliminary Plat Filed June 15, 1977  
Final Plat Filed July 20, 1977  
*APPROVED BY PLANNING BOARD*  
11/2/77  
*John T. Hester, Jr.*  
*Chairman*



**Plan & Profile**  
Pennsylvania Avenue

Scale  
Vertical 1"=4'  
Horizontal 1"=40'



**Typical Section**  
Pennsylvania Avenue  
No Scale

PETER L. RYAN  
REGISTERED  
PROFESSIONAL ENGINEER  
NO. 3372