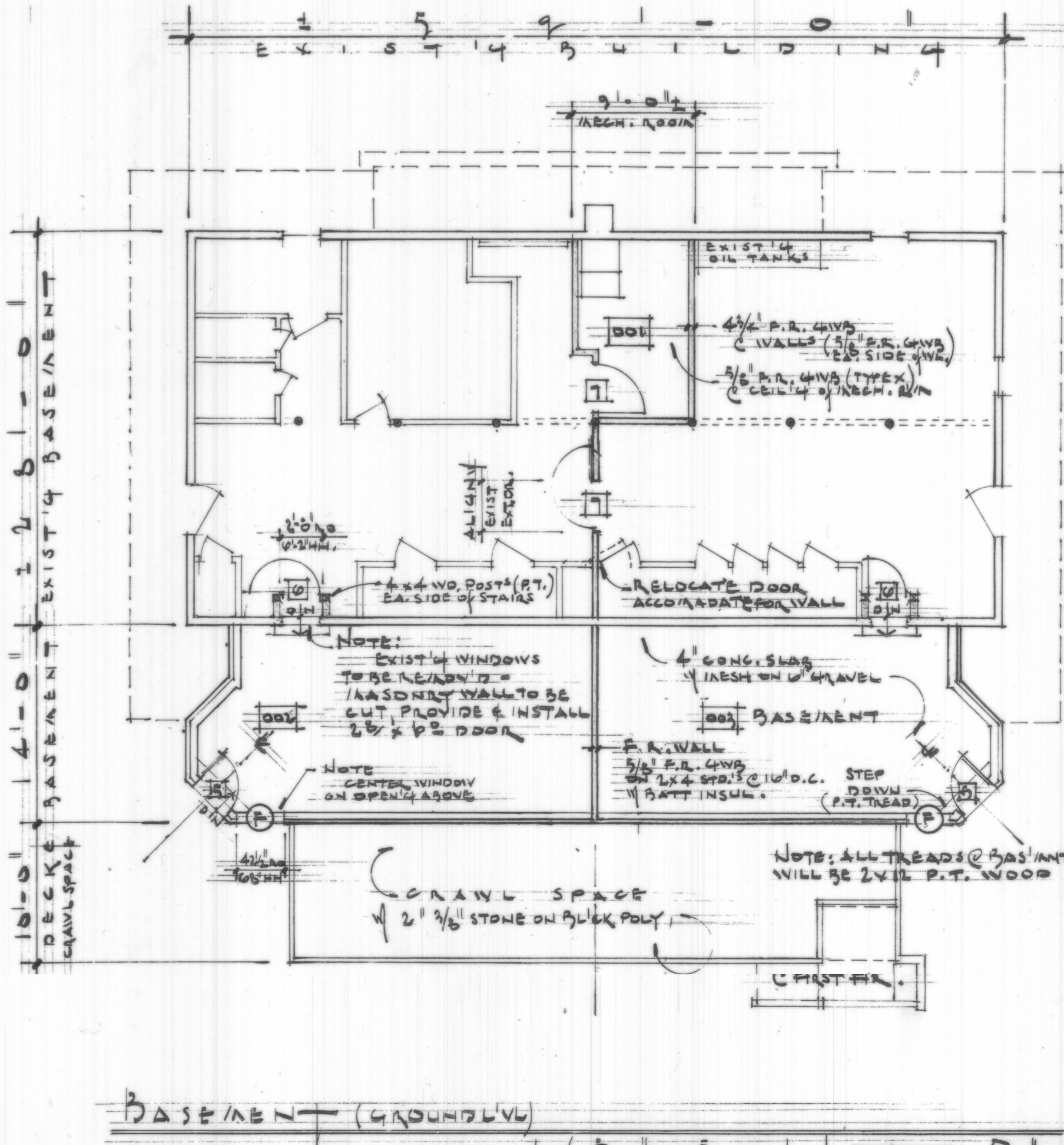


FINISH SCHEDULE

ROOM #	FLOOR FIN.	BASE INST'L	WALLS			CEILING FIN.	REMARKS
			N	E	S		
101	EXIST.	EXIST.	P.C. IMP. BOARD	PATCH MATCH	PATCH MATCH	EXIST.	
102			P.C. IMP. BOARD	PATCH MATCH	PATCH MATCH		
103			P.C. IMP. BOARD	PATCH MATCH	PATCH MATCH		
104			P.C. IMP. BOARD				
105			P.C. IMP. BOARD				
106			P.C. IMP. BOARD				
107			P.C. IMP. BOARD				
108			P.C. IMP. BOARD				
109			P.C. IMP. BOARD				
110			P.C. IMP. BOARD				
101	1/2" SUB. BOARD	NONE	1/2" PLY. BOARD	1/2" PLY. BOARD	1/2" PLY. BOARD	1/2" PLY. BOARD	NO SKIN COAT ON
102	1/2" SUB. BOARD	NONE	1/2" PLY. BOARD	1/2" PLY. BOARD	1/2" PLY. BOARD	1/2" PLY. BOARD	1/2" PLY. BOARD
001	EXIST'G	N.A.	P.R. GWS	P.R. GWS	P.R. GWS	P.R. GWS	SKIN COAT (TRUSS FIN.) ALL SURFACES
002	SMOOTH SLAB		S T R U C T U R E				
003	SMOOTH SLAB		S T R U C T U R E				

- ### LEGEND
- EXIST'G
 - STRIP ALL MATERIALS FROM WALL & LEAVE BARE STUDS.
 - ADDITION = 2x4 STR. WALL
 - PATCH TO MATCH EXIST'G
 - PATCH TO MATCH EXIST'G
 - 1/2" PLY. BOARD PARTY WALL
 - 2x4 W.O. BASE IN 2x4'S @ 16" O.C. W/ BATT INSUL. & 1/2" GWS (ALIGN W/ EXIST'G)
 - 2x4 P.R. (TYPE X) GWS (IMP. BOARD)



Submitted for record in Jamestown, RI
 Aug. 1, 2000 at 10:47 AM
 Peter Saboni, Town Clerk
 39

FIRST FLOOR PLAN

SEA CHALET RENOVATIONS

JAMESTOWN, RHODE ISLAND

DATE: 21 JUNE 1990
 DRAWN:
 REVISIONS:

FIRST FLR. PLAN

Basement & Finish Sch.

A.1

ESTES & CO
 ARCHITECTS
 401.846.3300
 79 THAMES ST
 NEWPORT, RI
 02840 - 2536