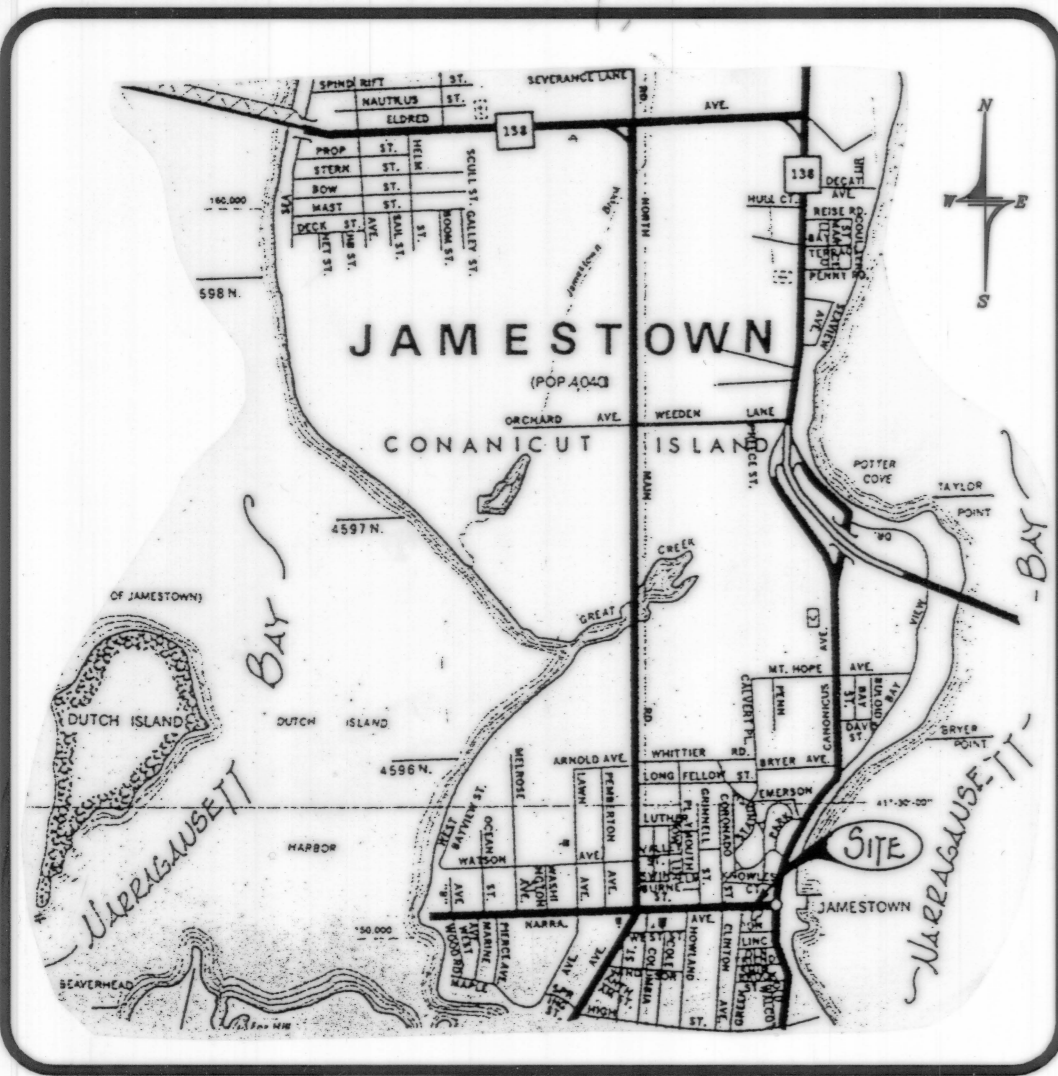


HPF 1161B



LOCATION MAP
NOT TO SCALE

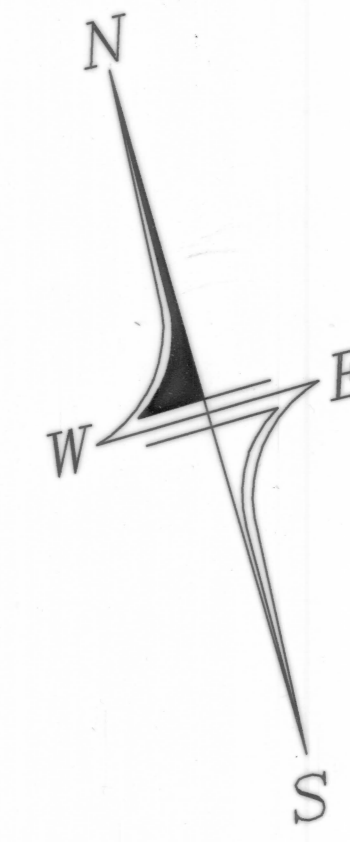
NOTE
ALL AREA OUTSIDE OF THE FACE OF THE INTERIOR WALLS IS TO BE CONSIDERED COMMON AREA.

ELEVATION TABLE

UNIT	FLOOR	LOWER FLOOR	CEILING	LOWER CEILING	CEILING @ PEAK
BASEMENT	20.4'	18.7'	27.5'	25.9'	
UNIT 1	28.3'	26.8'	35.4'		
UNIT 2	28.3'	26.8'	35.4'		
UNIT 3	36.5'			43.7'	46.3'
UNIT 4	36.5'			43.7'	46.3'

ELEVATIONS REFER TO APPROXIMATE M.S.L. DATUM

Received for record in Jamestown, R.I.
Aug. 1, 2000 at 10:45 AM
Peter Balonicki Town Clerk
32

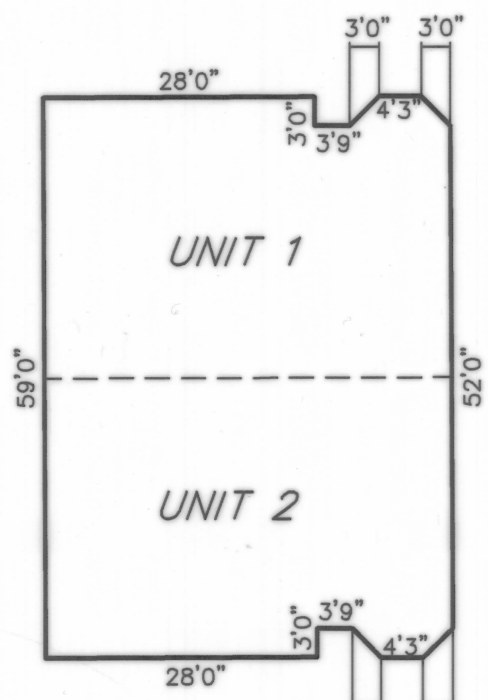


A.P. 9/LOT 692

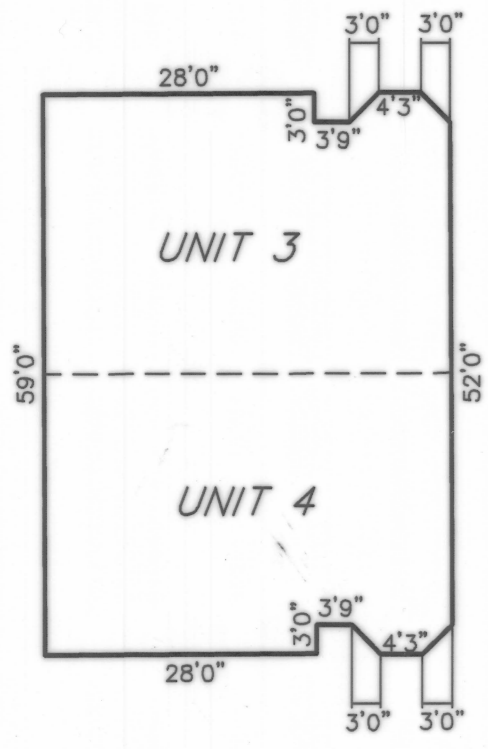
A.P. 9/LOT 691

FRIENDSHIP STREET

UNIT PLAN



FIRST FLOOR



SECOND FLOOR

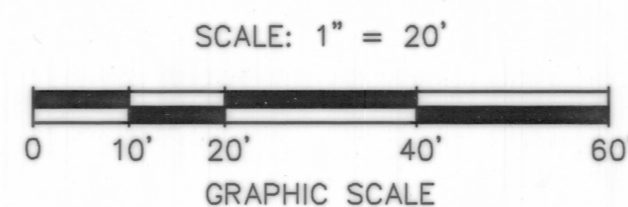
NOTE
UNIT PLAN DIMENSIONS ARE TAKEN FROM A PLAN ENTITLED "SEA CHALET RENOVATIONS, JAMESTOWN, RHODE ISLAND, DATE: 21 JUNE, 1990, ESTES & CO. ARCHITECTS", AND ARE NOT THE RESULT OF ACTUAL FIELD MEASUREMENTS.

REFERENCES:

- "SEA CHALET CONDOMINIUM, OWNED BY HARBOUR REALTY INC., JAMESTOWN, R.I., PLAT PLAN, SURVEY BY ISLAND ENGINEERING, JULY, 1979, SHEET 1 OF 2.
- "PARDON TUCKER PLACE, 4.73 ACRES, 14 LOTS ZONED R-8, OWNED BY THE JAMESTOWN PARTNERSHIP, DESIGNED BY PETER L. RYAN, PRELIM. PLAT FILED APRIL 19, 1978, FINAL PLAT FILED JUNE 14, 1978, ISLAND ENGINEERING."
- "PLAN OF LAND FOR SALE IN JAMESTOWN, R.I., BY JOHN CONGDON AND OTHERS, SAM'L. BROWN, SURVEYOR."
- RHODE ISLAND DEPARTMENT OF TRANSPORTATION STATE HIGHWAY PLATS 708 & 919.

LEGEND:

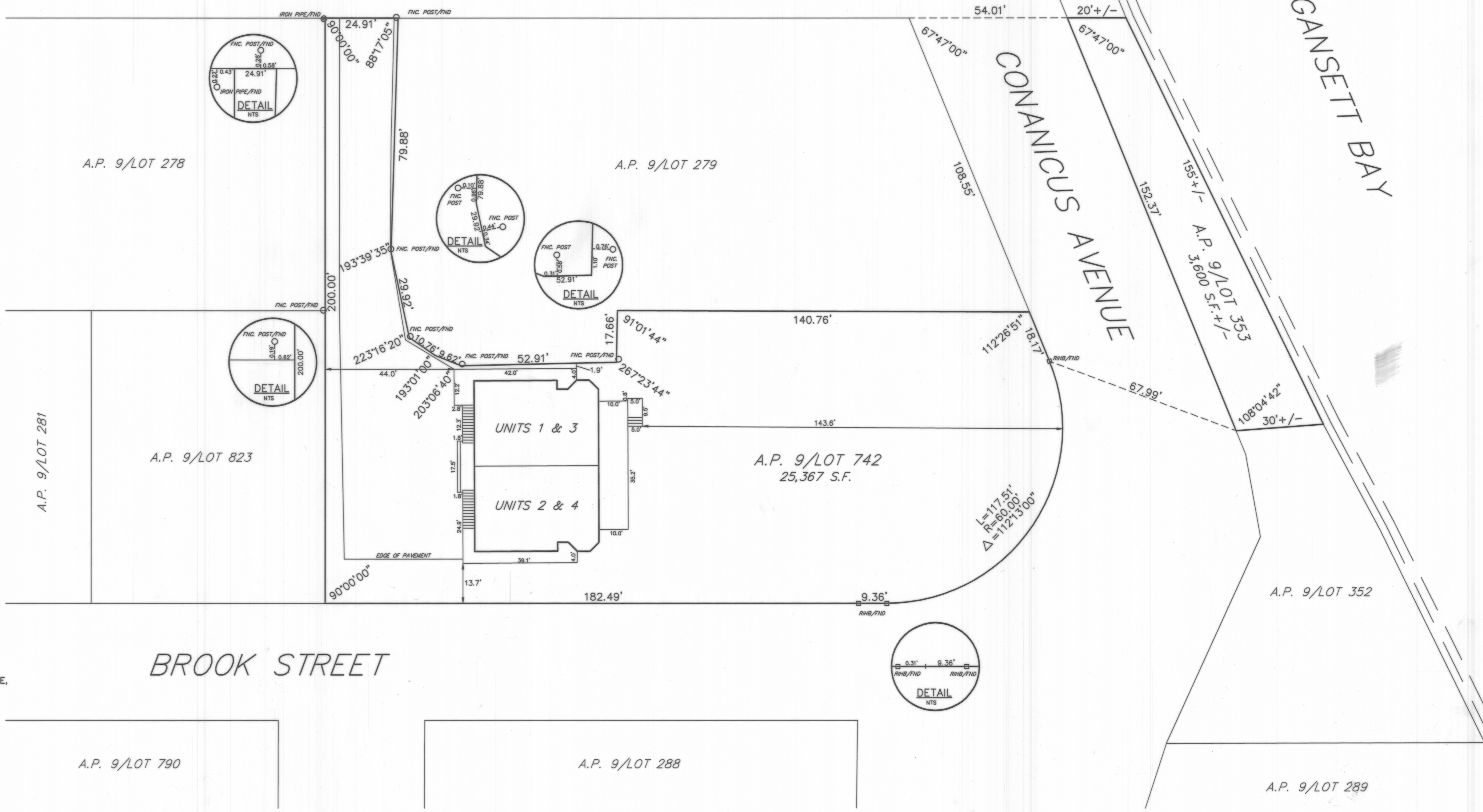
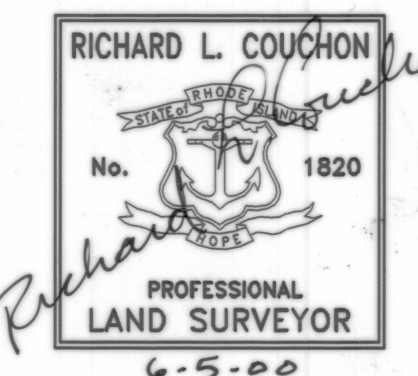
UNIT 1
A.P. 9/LOT 742 ASSESSOR'S PLAT & LOT



CERTIFICATION

THIS PLAN CONTAINS ALL THE INFORMATION REQUIRED BY SECTION 34-36.1-2.09 OF THE RHODE ISLAND CONDOMINIUM ACT, AND CONFORMS TO A CLASS II STANDARD AS ADOPTED BY THE RHODE ISLAND BOARD OF REGISTRATION FOR PROFESSIONAL LAND SURVEYORS.

BY: Richard L. Couchon 6-5-00
REGISTERED PROFESSIONAL LAND SURVEYOR DATE



NO.	REVISION	DATE



DOWDELL
ENGINEERING ASSOCIATES
CIVIL & ENVIRONMENTAL ENGINEERS
SURVEYORS & LAND PLANNERS
P.O. BOX 1684 • 3849 OLD POST ROAD
CHARLESTOWN, RHODE ISLAND 02813
(401) 384-1027

JOB NO. 1923	DRAWN BY: R.L.C.
DWG. NO. 1923-CON.	CHECKED: W.D.D.
SCALE: 1"=20'	APPROVED: W.D.D.
SHEET: 1	DATE: JUNE 5, 2000
1 OF 2 SHEETS	