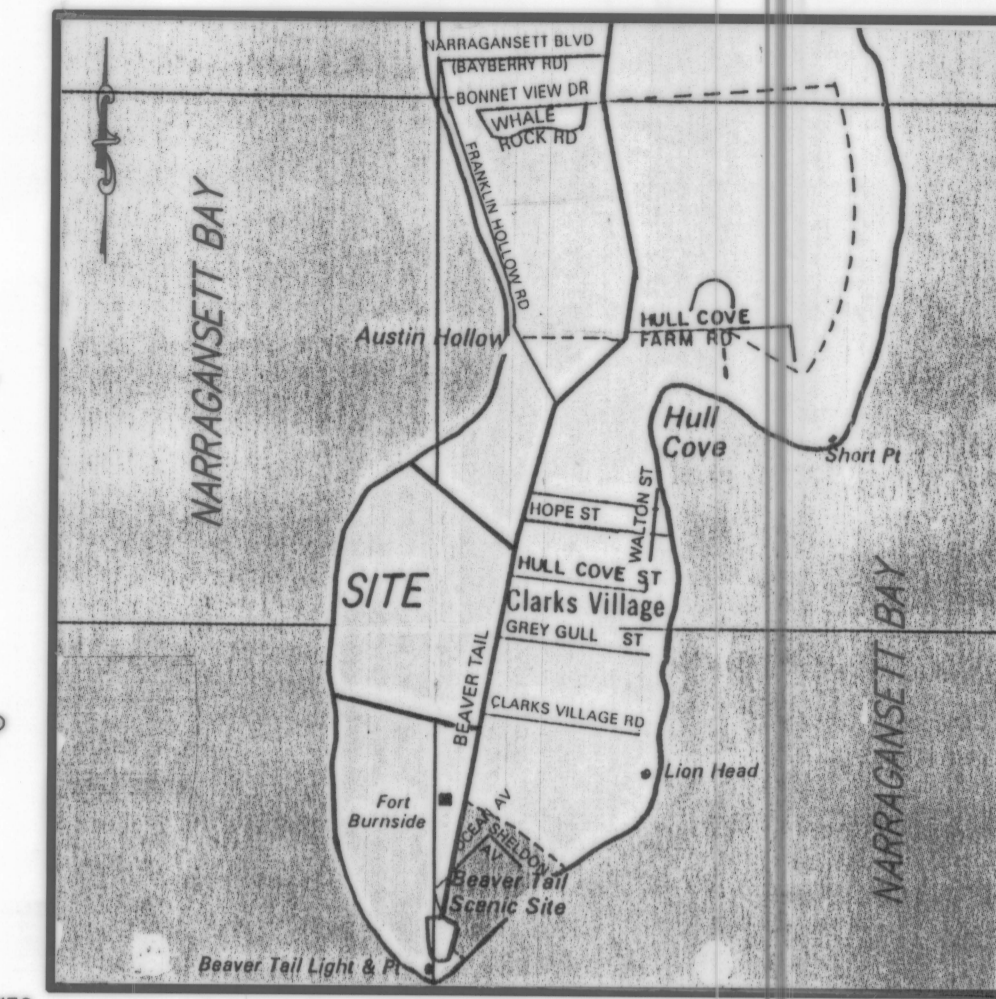
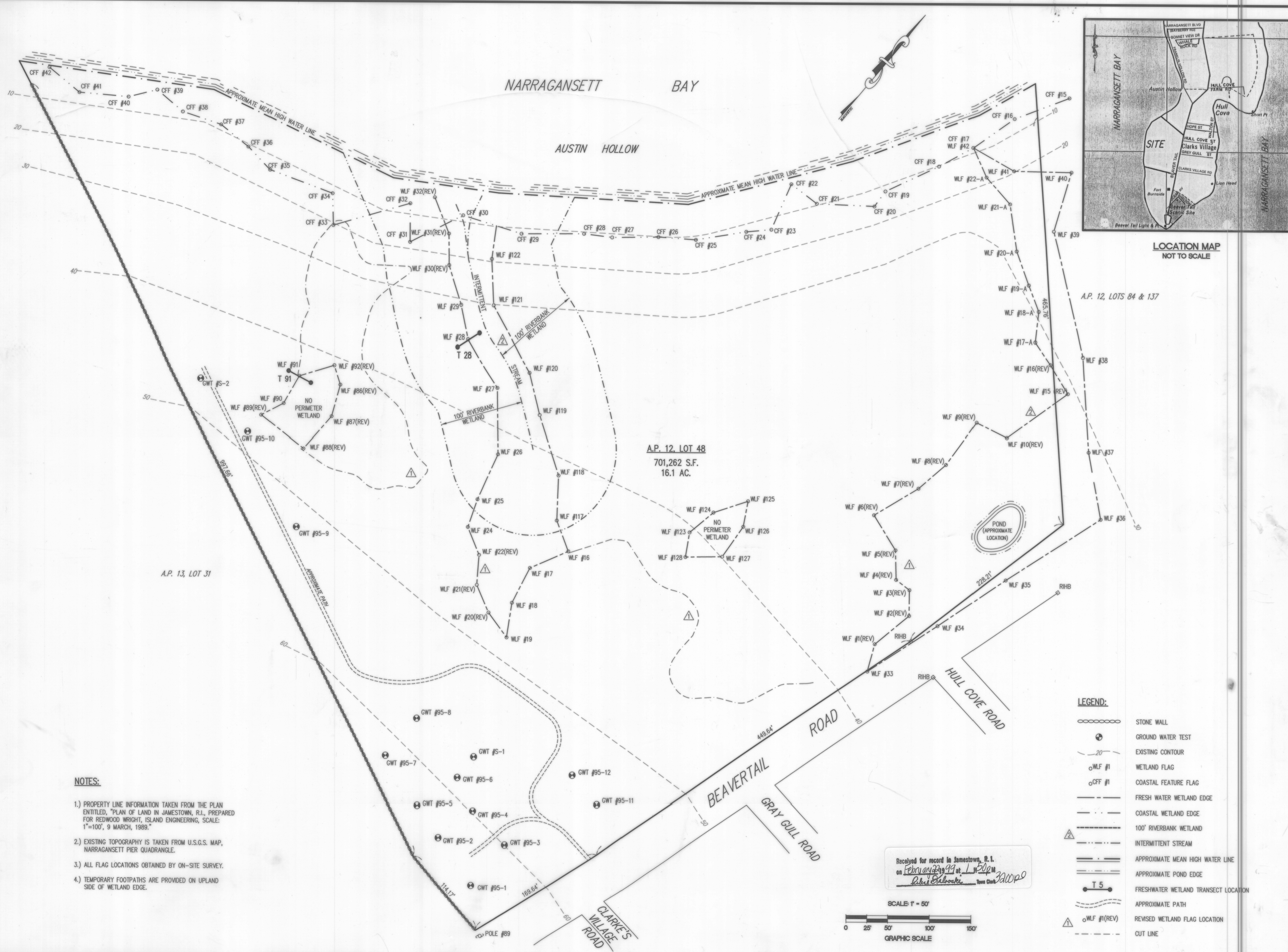
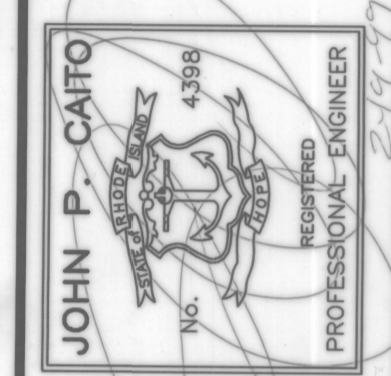


#1106
542B-DEM.DWG



LOCATION MAP
NOT TO SCALE

NO.	DATE	REVISION
1	12/28/95	WETLAND FLAG LOCATIONS AND CUT LINE ADDED
2	4/1/96	WETLAND PER DEM MODIFICATIONS
3	4/23/97	TRANSECTS



JOHN P. CAITO CORPORATION
 CIVIL ENGINEERS • LAND PLANNERS
 250 CENTERVILLE ROAD, BUILDING E
 WARWICK, RHODE ISLAND 02886-4953
 (401) 799-8200 FAX (401) 792-8686

PROJECT NO.: 175.532
 DATE: JUNE, 1995
 SCALE: 1" = 50'
 DESIGNED BY: COMPLETED
 DRAWN BY: B.D.
 CHECKED BY: J.P.C.

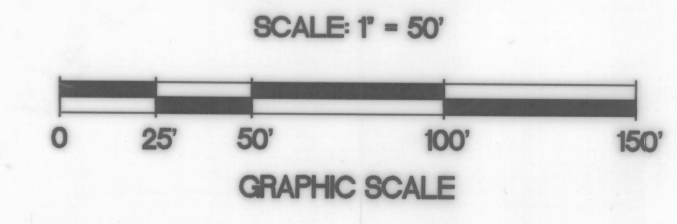
WETLAND VERIFICATION PLAN
 A.P. 12, LOT 48
 BEAVERTAIL ROAD
 PREPARED FOR
 REDWOOD WRIGHT

JAMESTOWN
 DRAWING NUMBER
1
 SHEET 1 OF 1

- NOTES:**
- 1.) PROPERTY LINE INFORMATION TAKEN FROM THE PLAN ENTITLED, "PLAN OF LAND IN JAMESTOWN, R.I., PREPARED FOR REDWOOD WRIGHT, ISLAND ENGINEERING, SCALE: 1"=100', 9 MARCH, 1989."
 - 2.) EXISTING TOPOGRAPHY IS TAKEN FROM U.S.G.S. MAP, NARRAGANSETT PIER QUADRANGLE.
 - 3.) ALL FLAG LOCATIONS OBTAINED BY ON-SITE SURVEY.
 - 4.) TEMPORARY FOOTPATHS ARE PROVIDED ON UPLAND SIDE OF WETLAND EDGE.

- LEGEND:**
- STONE WALL
 - ⊕ GROUND WATER TEST
 - - - - - EXISTING CONTOUR
 - WLF #1 WETLAND FLAG
 - CFF #1 COASTAL FEATURE FLAG
 - FRESH WATER WETLAND EDGE
 - - - - - COASTAL WETLAND EDGE
 - - - - - 100' RIVERBANK WETLAND
 - - - - - INTERMITTENT STREAM
 - - - - - APPROXIMATE MEAN HIGH WATER LINE
 - - - - - APPROXIMATE POND EDGE
 - - - - - FRESHWATER WETLAND TRANSECT LOCATION
 - - - - - APPROXIMATE PATH
 - △ ○ WLF #1(REV) REVISED WETLAND FLAG LOCATION
 - - - - - CUT LINE

Received for record in Jamestown, R.I.
 on February 29, 1996 at 1:50 PM
 [Signature]



© 1995 JOHN P. CAITO CORPORATION