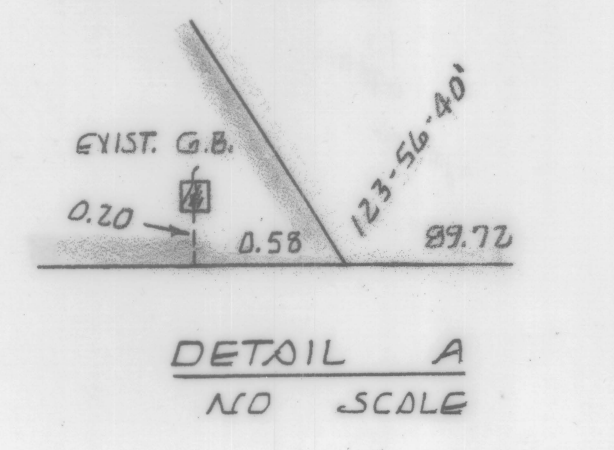
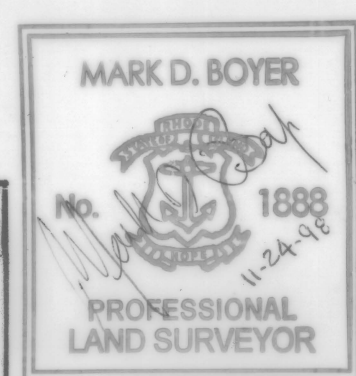


NOTE: THERE IS A SHORTAGE BETWEEN SOUTHERLY PLOT LINE & MONUMENTED STREET LINE P.C. LOT FRONTAGES ARE PRO-RATED ACCORDINGLY. PROPERTY LINES ARE PARALLEL TO MONUMENTED FRIGATE STREET LINE.

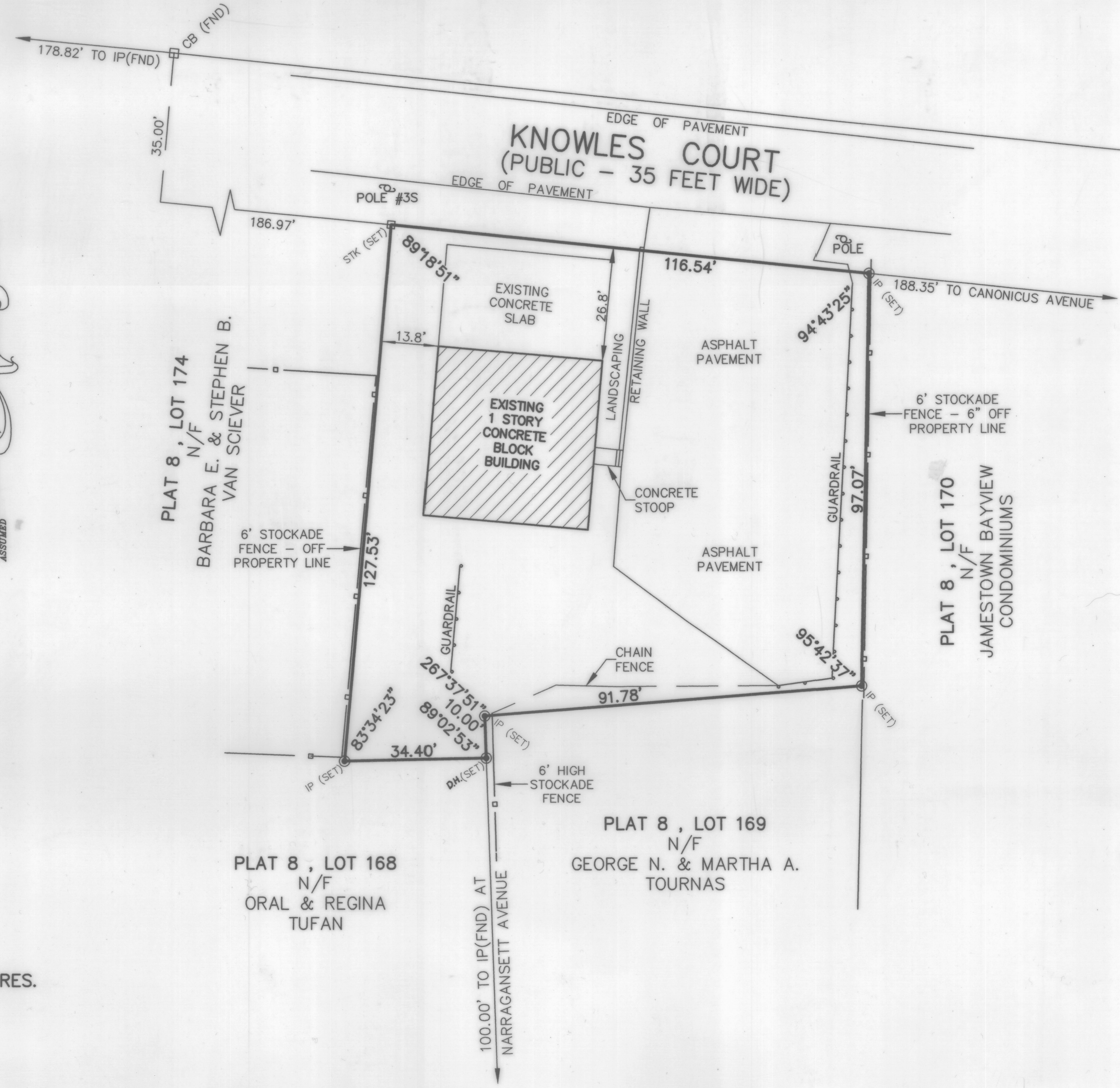
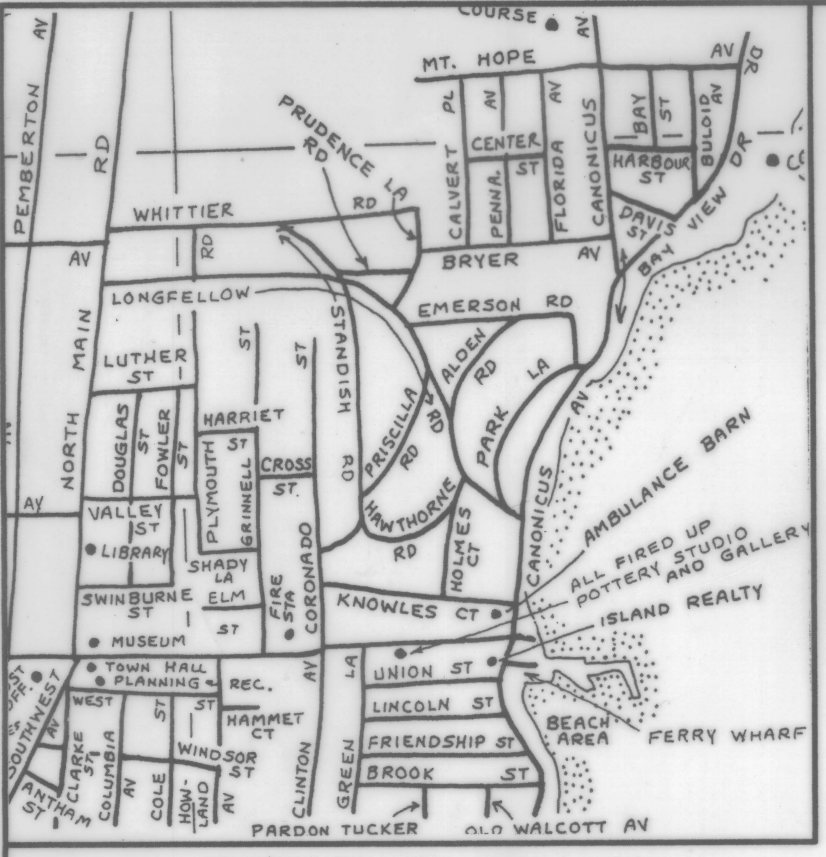


PROPERTY LINE RETRACEMENT SURVEY		
SCALE: 1" = 20'	APPROVED BY: JAMESTOWN, R.I.	DRAWN BY: MOB
DATE: OCT. 1998		REV: 11-24-98
ROBERT J. SETTIPANE		
BY BOYER ASSOCIATES		DRAWING NUMBER



THIS SURVEY AND PLAN CONFORM TO A CLASS 1 STANDARD AS ADOPTED BY THE RHODE ISLAND BOARD OF REGISTRATION FOR PROFESSIONAL LAND SURVEYORS.

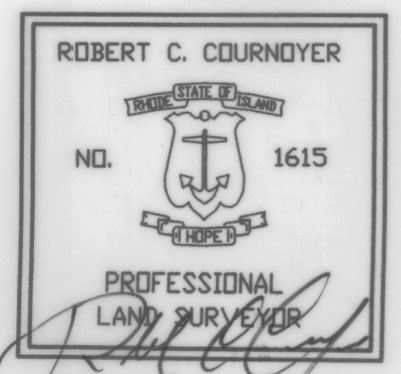
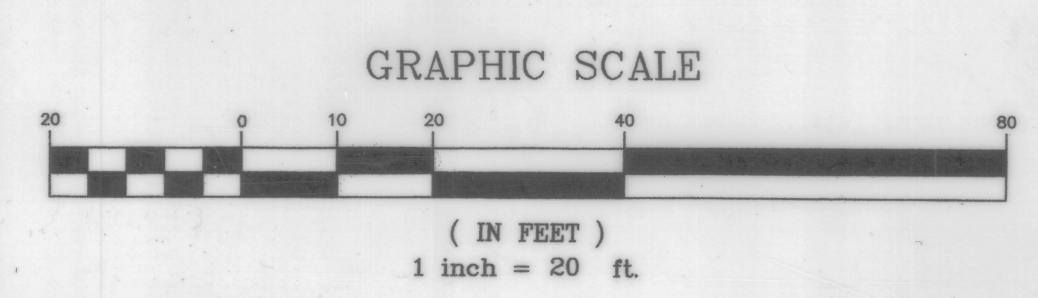
Received for record in Jamestown, R.I. on Dec 8, 1998 at 12:45 PM. *Robert J. Settipane* Town Clerk \$32.00



LEGEND

CB	CONCRETE BOUND
FND	FOUND
I.P.	IRON PIPE
N/F	NOW OR FORMERLY
S.F.	SQUARE FEET

NOTES:
 1. AREA BEING ASSESSOR'S PLAT 8, LOT 173.
 2. PARCEL AREA EQUALS 13,309 S.F. OF 0.3055 ACRES.



I HEREBY CERTIFY THAT THIS SURVEY AND PLAN CONFORMS TO A CLASS 1 STANDARD AS ADOPTED BY THE RHODE ISLAND BOARD OF REGISTRATION FOR PROFESSIONAL SURVEYORS.

BY: *Robert C. Cournoyer*
 ROBERT C. COURNOYER, PLS #1615

Received for record in Jamestown, R.I. on Aug 5, 1998 at 9:34am. *Arlene Kaloski* Town Clerk N/C

RC COURNOYER ENTERPRISES, INC. 297 COMSETT AVENUE SUITE 7 WEST WARWICK, R.I. 02893 PHONE 401-826-8811 FAX 401-826-8812	
PLAN OF LAND OWNED BY	TOWN OF JAMESTOWN
11 KNOWLES COURT	PLAT 8, LOT 173
JAMESTOWN, RHODE ISLAND	
DRAWING NO:	JAMESTOWN
SHEET NO:	1 OF 1
SCALE:	1" = 20'
DRAWN BY:	MICHAEL R. DARVEAU
DATE:	JUNE, 1998
REVISED	