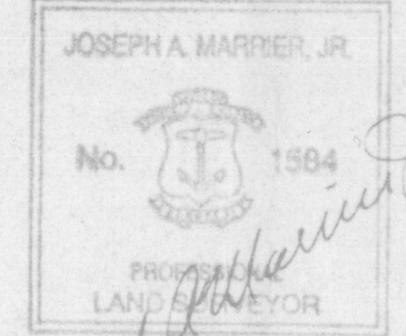


FED. ROAD DIV. NO.	STATE	FEDERAL AID PROJECT NO.	FISCAL YEAR	SHEET NO.	TOTAL SHEETS	RHODE ISLAND DEPARTMENT OF TRANSPORTATION
1	R.I.			1	7	

CERTIFICATE:
 EXISTING PROPERTY LINES AND STREET LINES SHOWN HEREON ARE SUBSTANTIALLY CORRECT IN ACCORDANCE WITH A CLASS IV STANDARD AS ADOPTED BY THE RHODE ISLAND BOARD OF REGISTRATION FOR PROFESSIONAL LAND SURVEYORS

Joseph A. Marrier, Jr.
 PROFESSIONAL LAND SURVEYOR 6-26-97 DATE



PLAT
 SHOWING LAND IN
THE TOWN OF JAMESTOWN

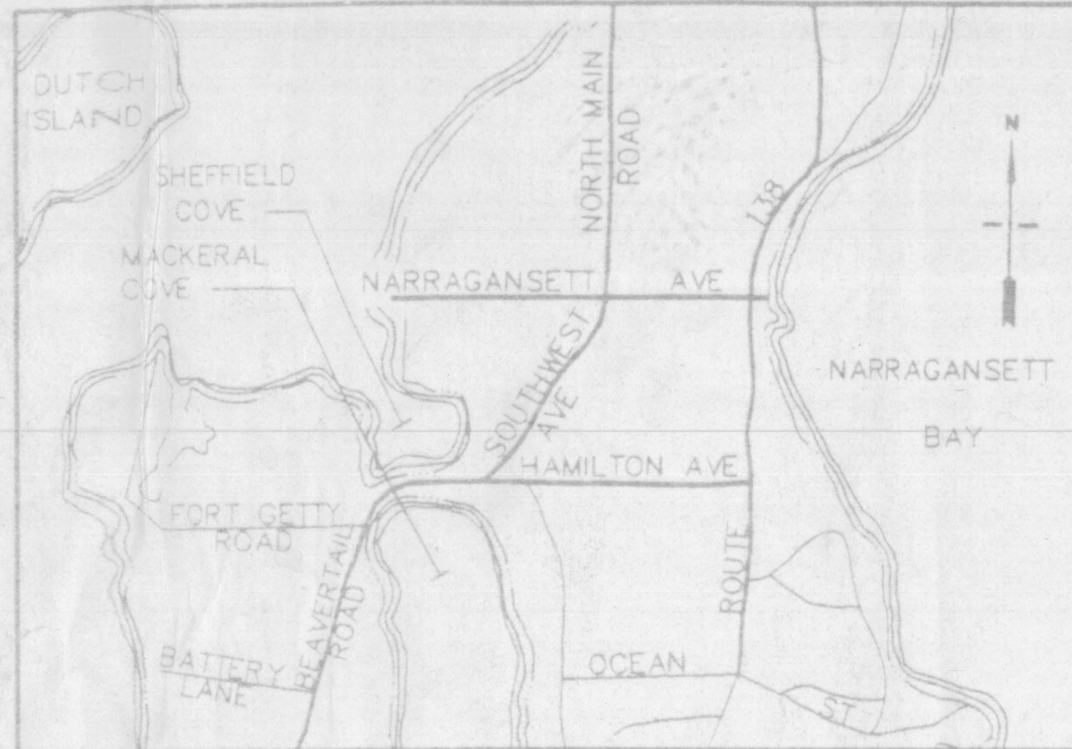
TAKEN FOR STATE HIGHWAY PURPOSES
 ON BEHALF OF
THE STATE OF RHODE ISLAND & PROVIDENCE PLANTATIONS
 BY THE
 DIRECTOR OF TRANSPORTATION

ACQUISITION BY CONDEMNATION AUTHORIZED BY THE STATE PROPERTIES COMMITTEE ON May 6, 1997 PURSUANT TO THE PROVISIONS OF TITLE 37, CHAPTER 6 OF THE GENERAL LAWS OF RHODE ISLAND 1956, AS AMENDED, AND PURSUANT TO THE PROVISIONS OF CHAPTER III OF THE PUBLIC LAWS OF RHODE ISLAND, 1970.

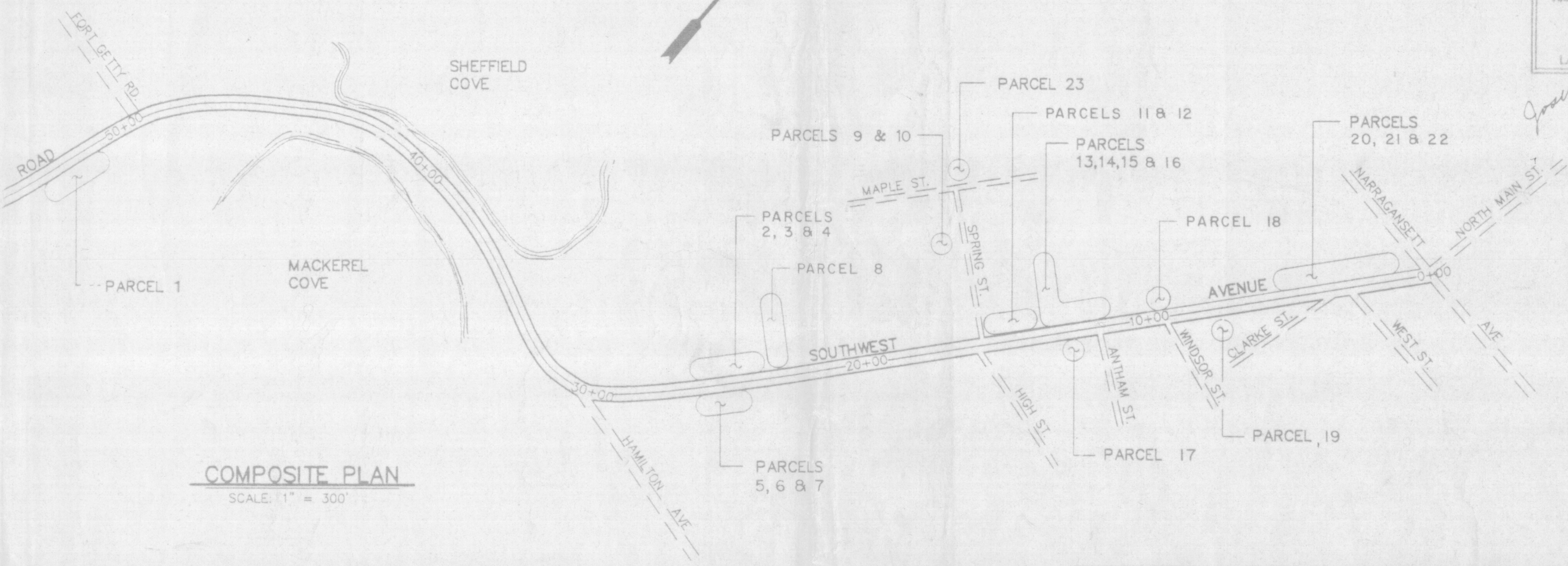
FILED IN THE OFFICE OF THE TOWN CLERK OF THE TOWN OF JAMESTOWN ON THE 24 DAY OF August 1997

SUBMITTED *[Signature]* CHIEF DESIGN ENGINEER
 APPROVED *[Signature]* CHIEF ENGINEER
 APPROVED *[Signature]* DIRECTOR OF TRANSPORTATION

HANGING PLAT FILE #133-B



LOCATION MAP
 SCALE: 1" = 2640' ±



COMPOSITE PLAN
 SCALE: 1" = 300'

NOTE:
 THE NAMES OF THE PERSONS SHOWN ON THIS PLAT ARE LISTED ONLY FOR AID IN THE IDENTIFICATION OF PARCELS AND SHOULD NOT BE CONSIDERED AS SUBSTANTIATION OF TITLE. AREAS AND DIMENSIONS OF INDIVIDUAL PARCELS HAVE BEEN TAKEN FROM ASSESSORS PLATS AND RECORDS AS OF JUNE 1992.

PARE ENGINEERING CORPORATION
 Engineers - Planners - Consultants
 8 Blackstone Valley Place, Lincoln, RI 02865
 401/334/4100 Fax: 401/334/4108

7-1-99
7-1-97

JAMESTOWN
SOUTHWEST AVENUE/BEAVERTAIL ROAD
 FROM NARRAGANSETT AVE. TO BATTERY LANE
PLAT No. 245C

7 SHEETS SHEET NO. 1
Plat No. 245C