

FED. ROAD DIV. NO.	STATE	FEDERAL AID PROJECT NO.	FISCAL YEAR	SHEET NO.	TOTAL SHEETS	RHODE ISLAND DEPARTMENT OF TRANSPORTATION
1	R.I.			7	7	

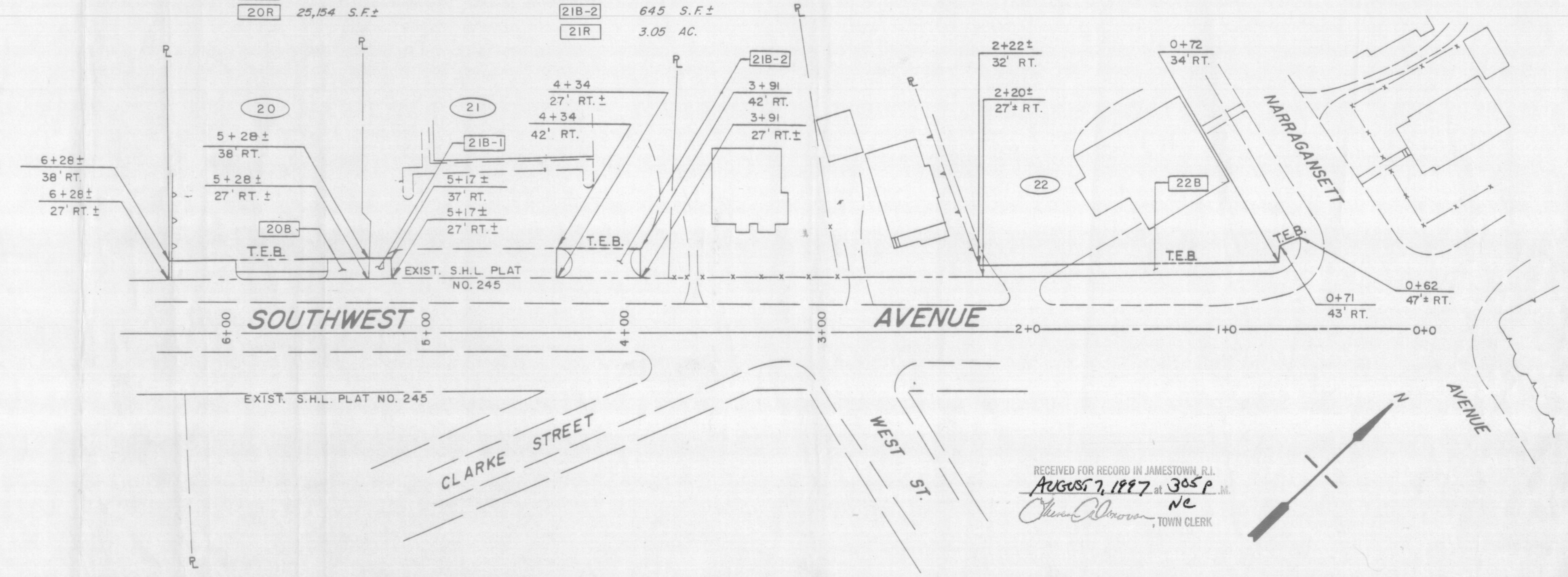
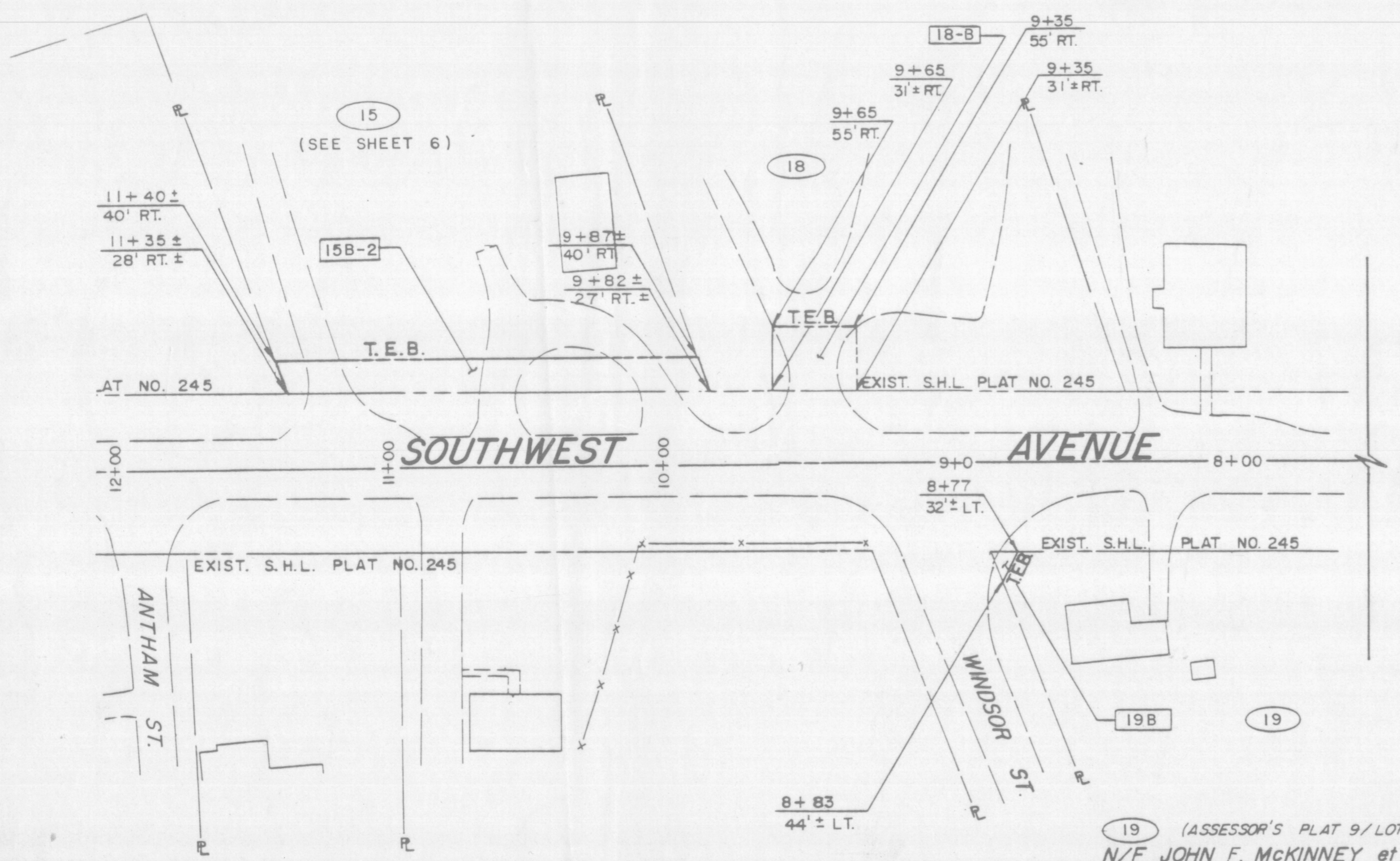
18 (ASSESSOR'S PLAT 9/LOT 22)  
 N/F TOWN OF JAMESTOWN  
 18T 63,000 S.F.  
 18B 720 S.F.±  
 18R 63,000 S.F.

20 (ASSESSOR'S PLAT 9/LOT 814)  
 N/F PETER B. CEPPI  
 20T 25,154 S.F.  
 20B 1,110 S.F.±  
 20R 25,154 S.F.±

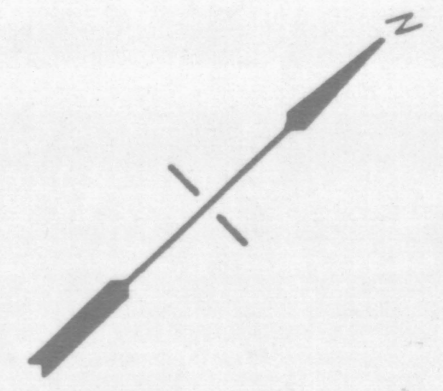
21 (ASSESSOR'S PLAT 9/LOT 813)  
 N/F JAMESTOWN FOUR CORNERS CONDOMINIUMS  
 21T 3.05 AC.  
 21B-1 121 S.F.±  
 21B-2 645 S.F.±  
 21R 3.05 AC.

19 (ASSESSOR'S PLAT 9/LOT 44)  
 N/F JOHN F. MCKINNEY et ux KAREN M.  
 19T 6060 S.F.±  
 19B 60 S.F.±  
 19R 6060 S.F.±

22 (9/702)  
 N/F FEDERAL PROPERTIES OF RHODE ISLAND, INC.  
 22T 16513 S.F.±  
 22B 824 S.F.±  
 22R 16513 S.F.±



RECEIVED FOR RECORD IN JAMESTOWN, R.I.  
 August 7, 1997 at 3:05 P.M.  
*[Signature]*  
 TOWN CLERK



RECEIVED  
 JUL 10 1997  
 Department of Transportation  
 State House

**PARE ENGINEERING CORPORATION**  
 Engineers - Planners - Consultants  
 8 Blackstone Valley Place, Lincoln, RI 02865  
 401/334/4100 Fax: 401/334/4108

*APJ*  
 7.1.97

JAMESTOWN  
**SOUTHWEST AVENUE/BEAVERTAIL ROAD**  
 FROM NARRAGANSETT AVE. TO BATTERY LANE  
**PLAT No. 245C**

...?... SHEETS SHEET NO. ?...  
**Plat No. 245C**