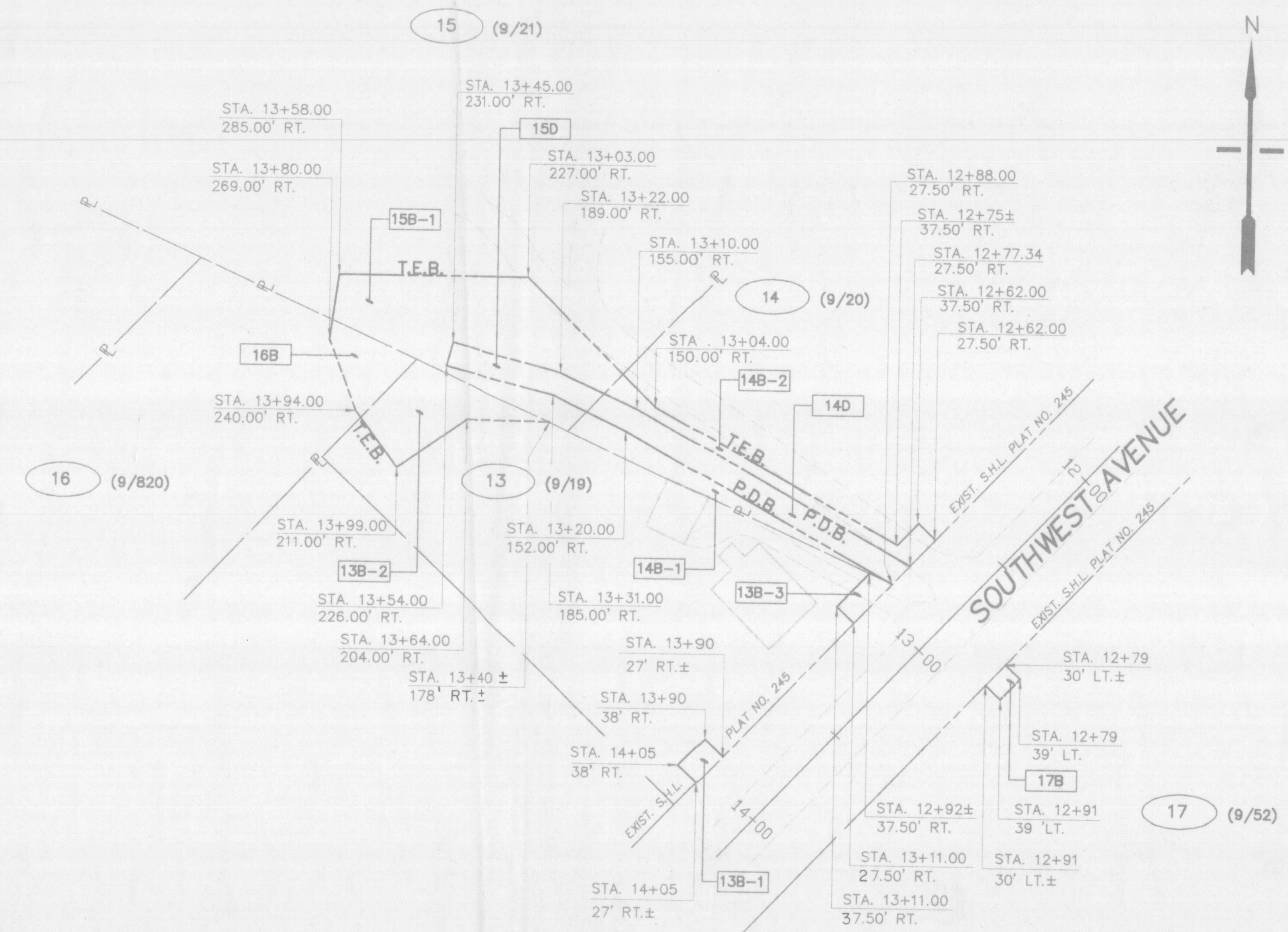


FED. ROAD DIV. NO.	STATE	FEDERAL AID PROJECT NO.	FISCAL YEAR	SHEET NO.	TOTAL SHEETS	RHODE ISLAND DEPARTMENT OF TRANSPORTATION	
1	R.I.			6	7		



13 (9/19)
N/F MICHAEL C. and DEBORAH SLATTERY

13T	26,750 S.F.±
13B-1	165 S.F.±
13B-2	1453 S.F.±
13B-3	213 S.F.±
13R	26,750 S.F.±

14 (9/20)
N/F JAYNE C. CLARKE

14T	0.50 AC.±
14B-1	903 S.F.±
14B-2	871 S.F.±
14D	1,526 S.F.±
14R	0.50 AC.±

15 (9/21)
N/F JAYNE C. CLARKE

15T	98,001 S.F.±
15B-1	3,894 S.F.±
15B-2	1,836 S.F.±
15D	660 S.F.±
15R	98,001 S.F.±

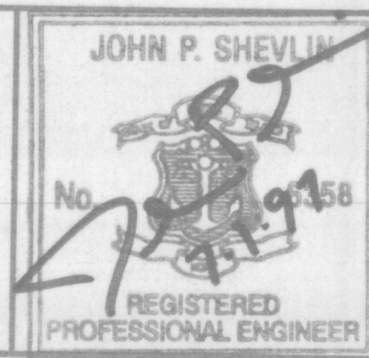
16 (9/820)
N/F ELLEN MCGRATH RETTIG

16T	24,258 S.F.±
16B	712 S.F.±
16R	24,258 S.F.±

17 (9/52)
N/F CHERI R. SHEEKEY et ux THOMAS J.

17T	5,000 S.F.±
17B	108 S.F.±
17R	5,000 S.F.±

PARE ENGINEERING CORPORATION
 Engineers - Planners - Consultants
 8 Blackstone Valley Place, Lincoln, RI 02865
 401/334/4100 Fax: 401/334/4108



JAMESTOWN
SOUTHWEST AVENUE/BEAVERTAIL ROAD
 FROM NARRAGANSETT AVE. TO BATTERY LANE
PLAT No. 245C

... 7 ... SHEETS SHEET NO. 6 ...
Plat No. 245C