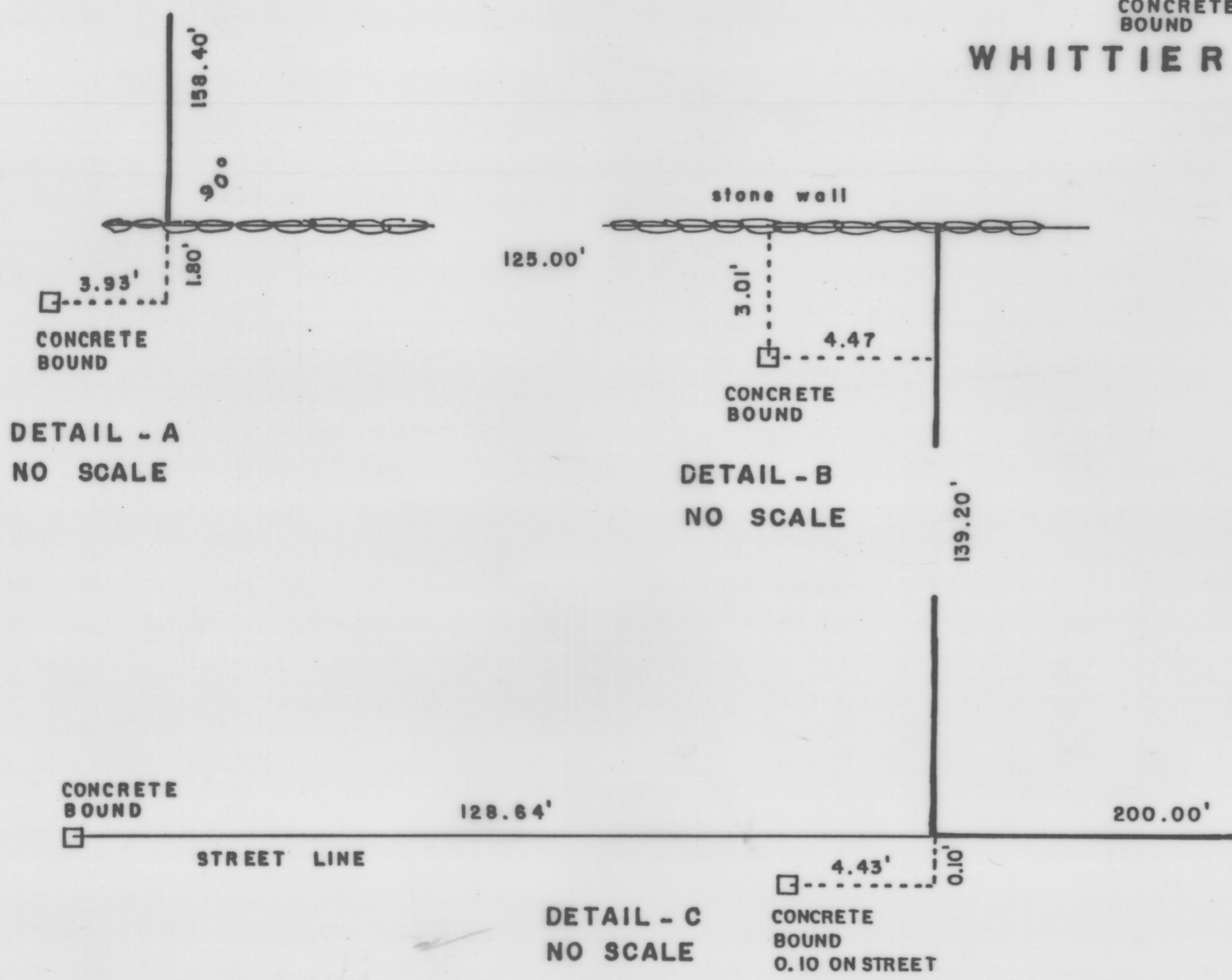
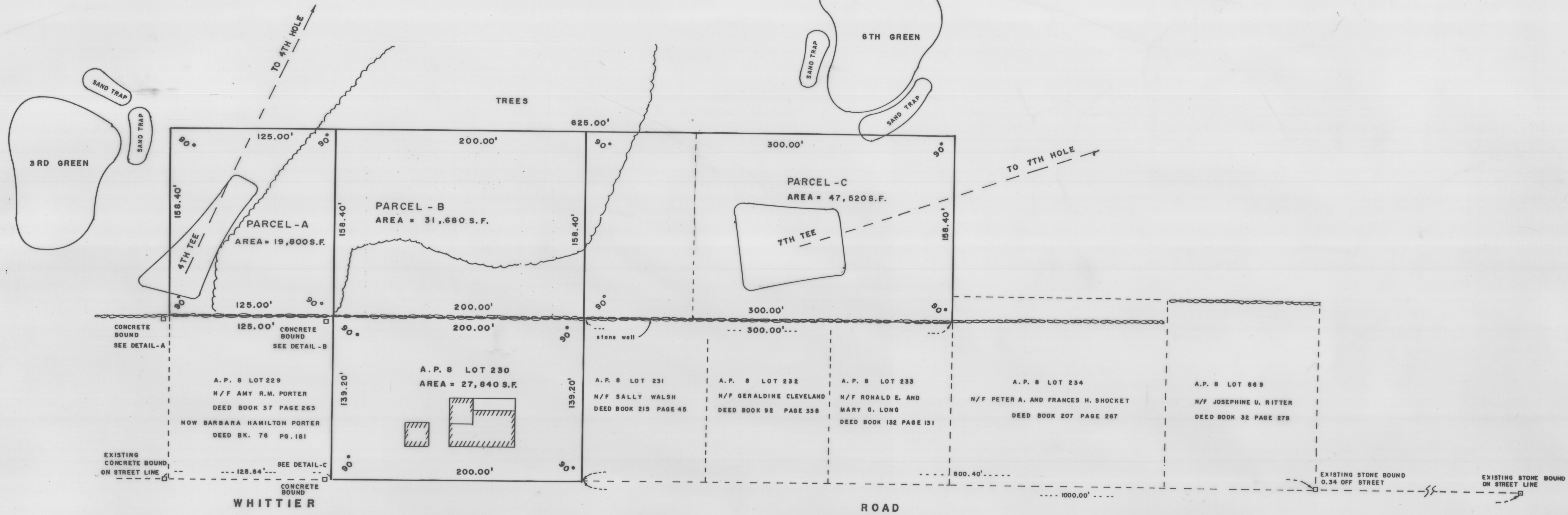


THIS SURVEY AND PLAN CONFORM TO A CLASS I STANDARD AS ADOPTED BY THE RHODE ISLAND BOARD OF REGISTRATION FOR PROFESSIONAL LAND SURVEYORS  
BY: Benjamin T. Addy 10-24-96  
REGISTERED PROFESSIONAL LAND SURVEYOR DATE



A. P. 8 LOT 283  
DEED BOOK 101 PAGE 215  
THE TOWN OF JAMESTOWN



SURVEY OF LAND IN JAMESTOWN, R. I.  
FOR SAMUEL W. BRYANT III AND  
WILLIAM F. BRYANT

BY BENJAMIN T. ADDY, PROFESSIONAL LAND SURVEYOR  
SCALE: 1" = 40'  
BEING LOT 230, 612 AND 784 ON TAX ASSESSOR'S PLAT 8

AUGUST 22, 1996  
REVISED SEPTEMBER 30, 1996  
OCTOBER 24, 1996

SUBDIVISION APPROVED AS SUBMITTED  
24 Dec 96  
Mark A. Branning  
Town Planner  
Town of Jamestown, RI

RECEIVED FOR RECORD IN JAMESTOWN, R.I.  
December 21, 1996 1:11 p.m.  
Town Clerk