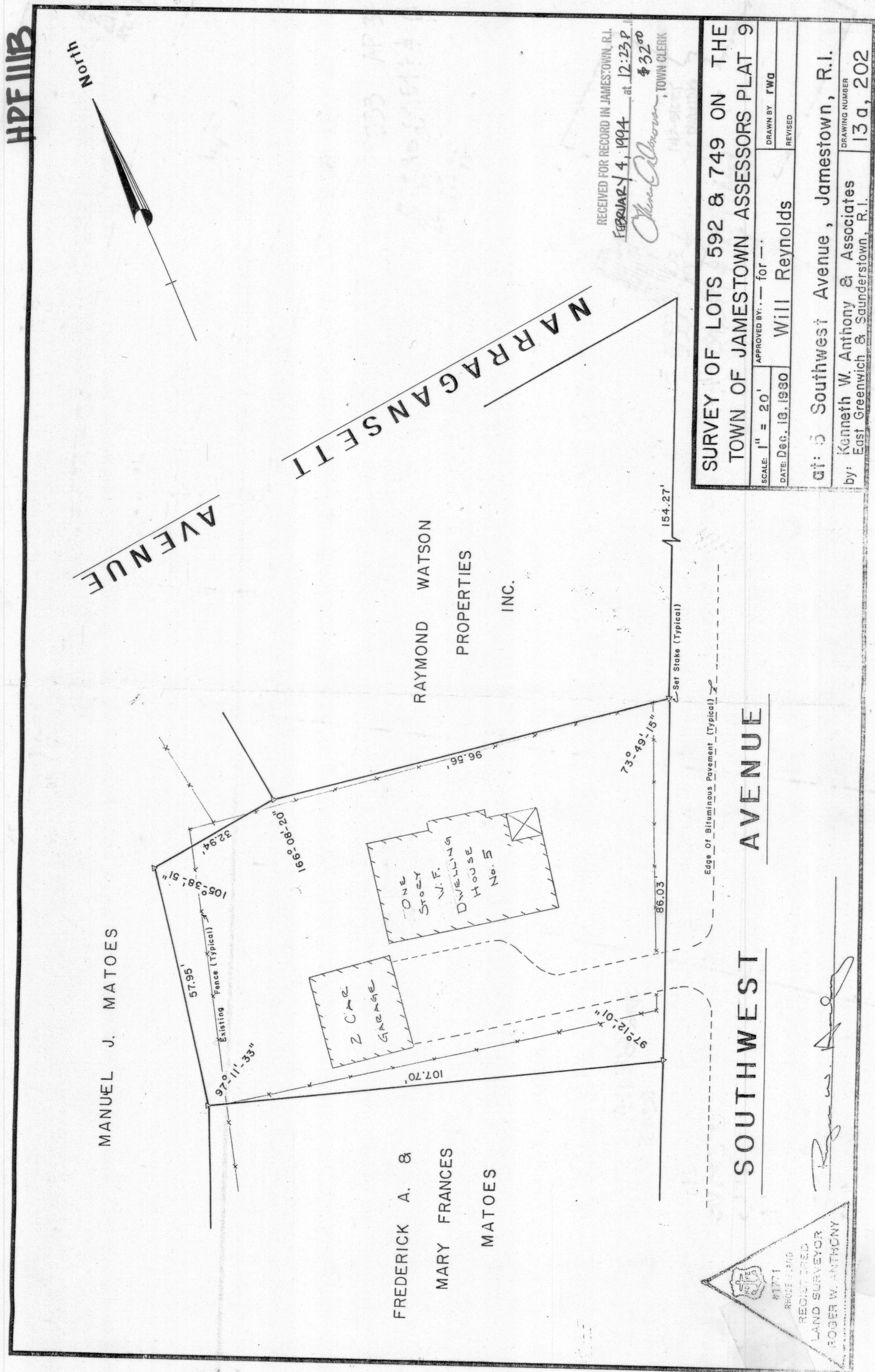


HPE 111B



SURVEY OF LOTS 592 & 749 ON THE TOWN OF JAMESTOWN ASSESSORS PLAT 9

SCALE: 1" = 20'

DATE DEC. 18, 1980

DESIGNED BY: Will Reynolds

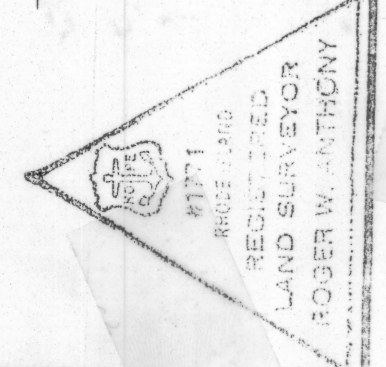
DRAWN BY: FWG

REVISED

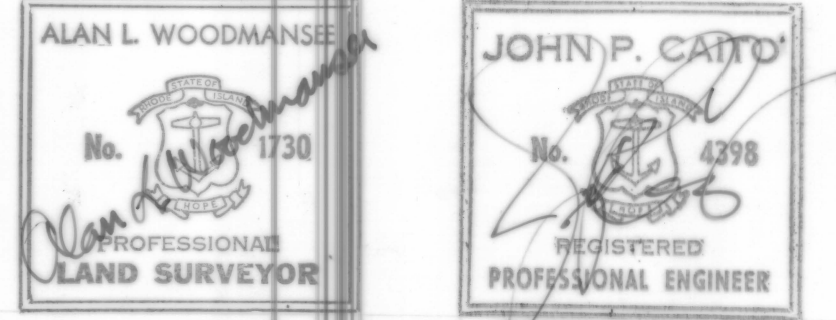
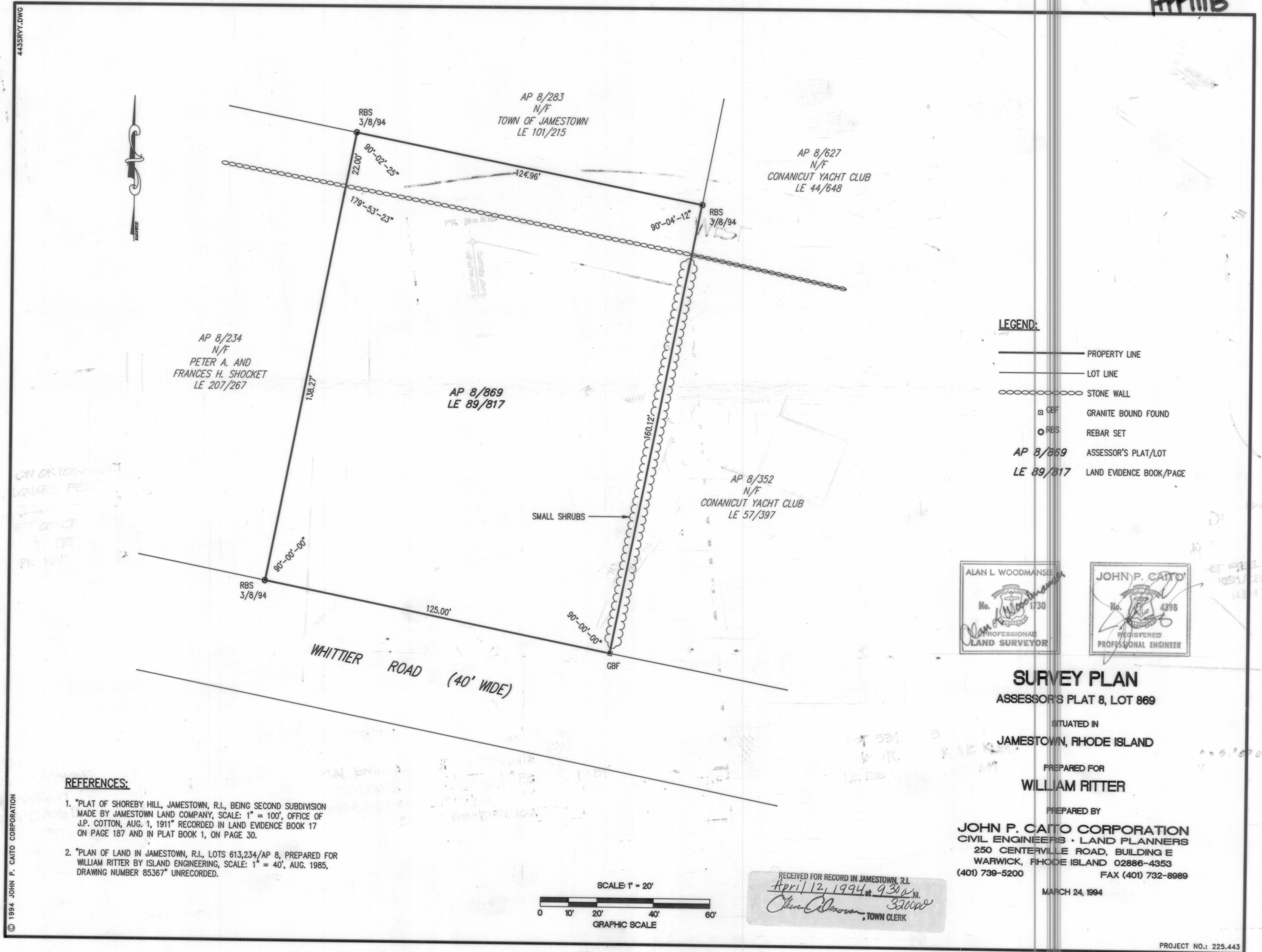
City: 5 Southwest Avenue, Jamestown, R.I.

by: Kenneth W. Anthony & Associates
East Greenwich & Saundertown, R.I.

DRAWING NUMBER: 13 a, 202



© 1984 JOHN P. CATO CORPORATION



SURVEY PLAN
ASSESSOR'S PLAT 8, LOT 869

SITUATED IN
JAMESTOWN, RHODE ISLAND

PREPARED FOR
WILLIAM RITTER

PREPARED BY
JOHN P. CATO CORPORATION
CIVIL ENGINEERS • LAND PLANNERS
250 CENTERVILLE ROAD, BUILDING E
WARWICK, RHODE ISLAND 02886-4353
(401) 739-5200 FAX (401) 732-8989

MARCH 24, 1994

PROJECT NO.: 225.443

HPE 111B