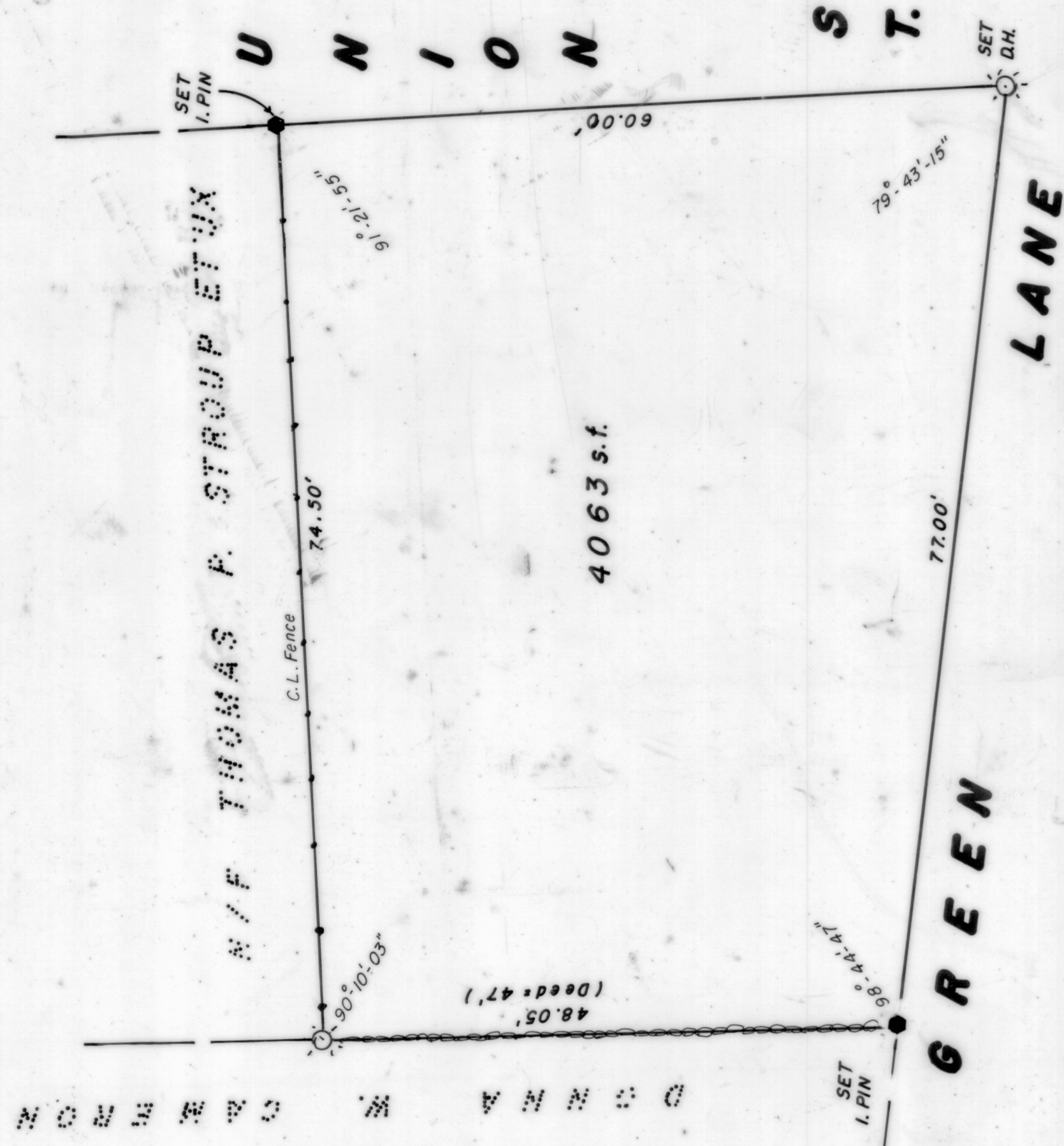
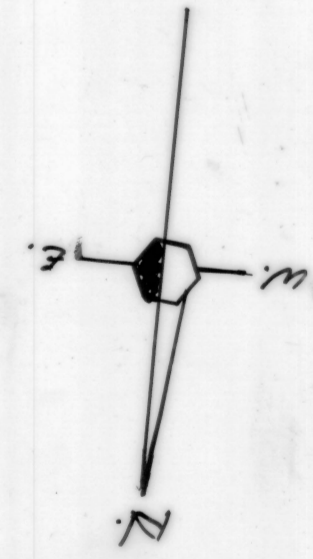


HPF 109B

SURVEY OF LAND - FOR  
DONNA W. CAMERON  
JAMESTOWN, R.I. SEPT. 1992

Scale 1" = 10'

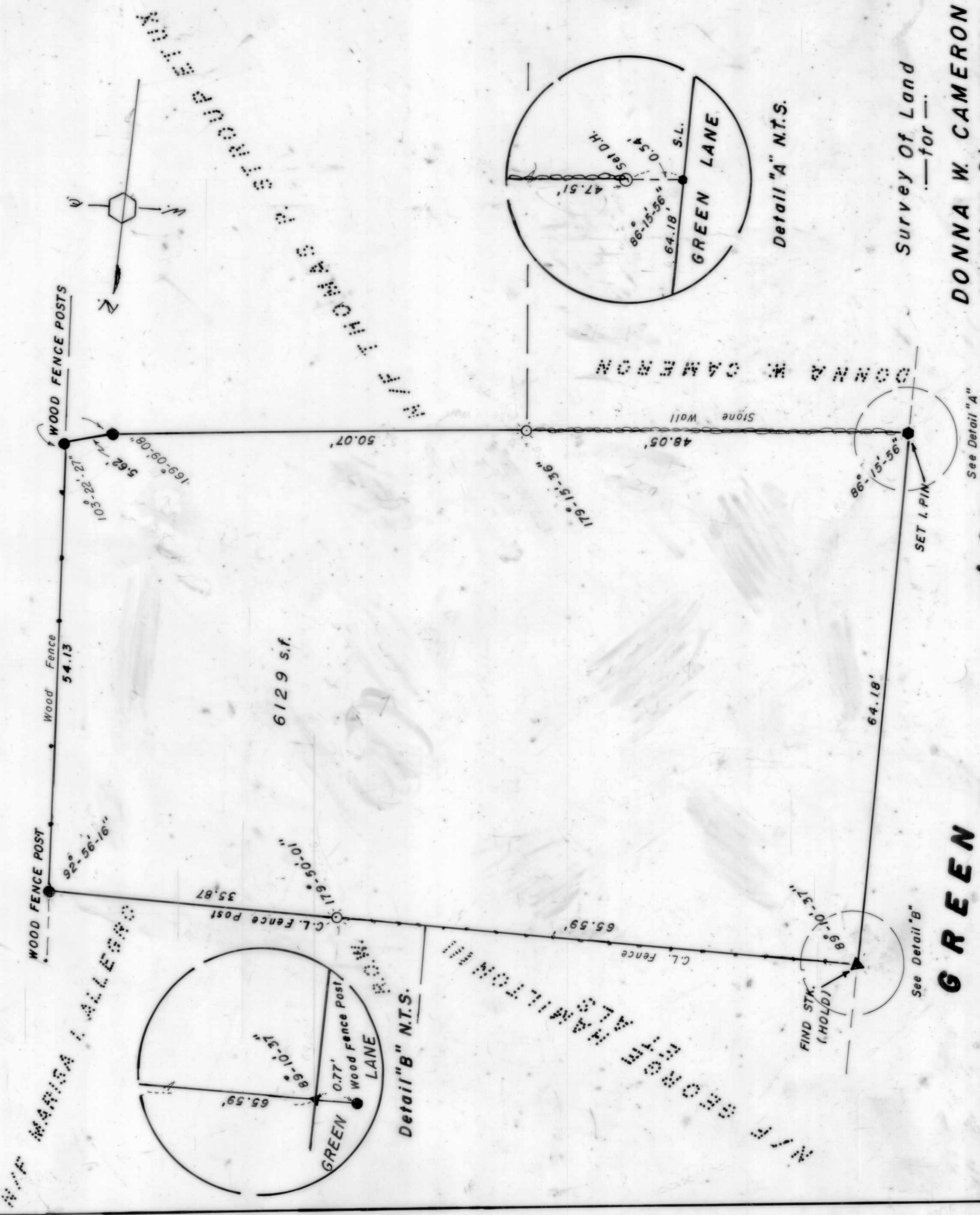


RECORDED FOR RECORD IN JAMESTOWN, R.I.  
0078-2-30-12-2012  
Donna W. Cameron, Town Clerk

FROM THE OFFICE  
OF  
KENNETH W. ANTHONY  
Reg. Land Surveyor  
E. Greenwich, R.I.

Draw 5 - Sht. 201

HPF 109B



FROM THE OFFICE  
OF  
KENNETH W. ANTHONY  
Reg. Land Surveyor  
E. Greenwich, R.I.

RECEIVED FOR RECORD IN JAMESTOWN, R.I.  
0078-2-30-12-2012  
Donna W. Cameron, Town Clerk

SURVEY OF LAND  
— FOR —  
DONNA W. CAMERON  
JAMESTOWN, R.I. SEPT. 1992

Scale 1" = 10'

Draw 5 - Sht. 202